

# ☰ CONTENTS

◆ Diving flashlight	1
◆ Head/Bike light	22
◆ HID flashlight	26
◆ LED flashlight	31
◆ Accessories	35

**HI-MAX**®

## MAIN PRODUCTS





# ABOUT US

Shenzhen Hi-Max Technology Co.,Ltd. was founded in 2007,  
devoting to developing and manufacturing in this industry for years.

**Our main products:**

Profession al military flashlight

Diving light、 Night Fishing light

Camping light、 Wild Life-saving flashlight

Miner/Bike light、 HID Search light.

We are have partners in South American, UK, and Europe, and Australia.

**Our mission:**

provide our parnters "high quality" rational price service.

We will develop concerned new products continually.



# INTRODUCTION

Shenzhen Hi-max Technology Co.,Ltd was founded at 2007 year. We leading manufacturer of LED flashlight especial in Diving flashlights, target diving torch manufacturer and supply diving light such as handheld lihgt, Camping flashlight Scuba diving flashlight, underwater photography diving torch, Zoomable flashlight and narrow beam diving light, HID light and out door camping lamp. We have a dozen of engineers who dedicated to developpe and improve our products. best service, rational prices result in our company progress quickly, and now there are more than 100 staff work here. We believe we can offer you best products and best service with competitive price.

Our exclusive factory includes state of the art CNC machines, production assembly lines, testing labs and custom design CAD equipment. Through our years of experience, we have developed our own brand and earn a excellent feedbacks for our users.



office



office worker



Worker





**SHENZHEN HI-MAX TECHNOLOGY CO.,LTD**

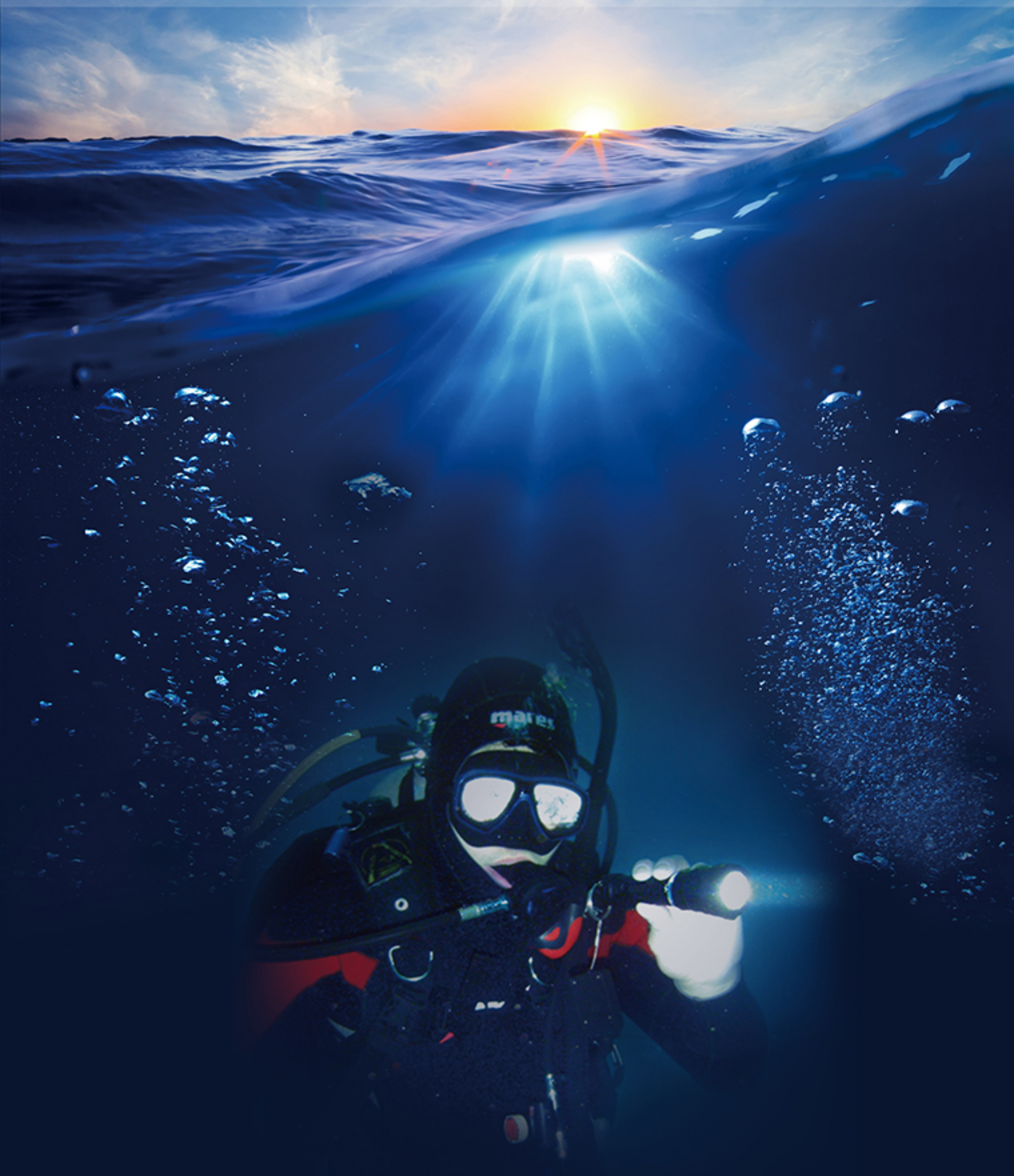
TEL: 0755-82732791    FAX: 0755-82732790    Web: [www.hi-max.com.cn](http://www.hi-max.com.cn)    Ali: [hi-max.en.alibaba.com](http://hi-max.en.alibaba.com)

Add.: Room 710, Oversea Student Venture mansion, South Keyuan Road, Nanshan Technology Park, Shenzhen, China



**HI-MAX**®

➔ **Diving Series**





# Diving Series

## X5



## Specification

Lumen	1000lm	Switch	Magnetic ON/OFF
Runtime	about 70min	Reflector	SMO Aluminum Alloy
LED	CREE XM-L2 U2	LED Color	white 6500~7300k
Irradiation Distance	200m	Body Color	black
Waterproof	100m	Size	143*42*32mm
Battery	18650*1PC	Weight	185g

# Diving Series

## X6



### Specification

Lumen	1000lm	Switch	Magnetic ON/OFF
Runtime	about 120min	Reflector	SMO Aluminum Alloy
LED	CREE XM-L2 U2	LED Color	white 6500~7300k
Irradiation Distance	200m	Body Color	black
Waterproof	100m	Size	220*50*30mm
Battery	18650*2PC	Weight	340g



# Diving Series

## X7



## Specification

Lumen	3000lm	Switch	Magnetic ON/OFF
Runtime	70min(26650*2) 60min(18650*2)	Reflector	SMO Aluminum Alloy
LED	3*CREE XM-L2 U2	LED Color	white 6500~7300k
Irradiation Distance	200m	Body Color	black
Waterproof	150m	Size	225*64*36mm
Battery	18650/26650*2PC	Weight	600g

# Diving Series

## X8



### Specification

Lumen	860lm	Switch	Magnetic ON/OFF
Runtime	about 70min	Output	2.75~4.2V
LED	CREE XM-L2 U2	LED Color	white 6500~7300k
Irradiation Distance	300m	Body Color	black
Waterproof	100m	Size	128.5*42*32mm
Battery	18650*1PC	Weight	175g



# Diving Series

## X9



### Specification

Lumen	860lm	Switch	Magnetic ON/OFF
Runtime	about 120min	Output	2.75~4.2V
LED	CREE XM-L2 U2	LED Color	white 6500~7300k
Irradiation Distance	300m	Body Color	black
Waterproof	100m	Size	191*44*32mm
Battery	18650*2PC	Weight	241g

# Diving Series

## H5



### Specification

Lumen	1000lm	Switch	Slide switch
Runtime	about 120min	Reflector	OP Aluminum Alloy
LED	CREE XM-L U2	LED Color	white 6500~7300k
Irradiation Distance	200m	Body Color	black
Waterproof	100m	Size	250*48*32mm
Battery	18650*2PC	Weight	265g



# Diving Series

## H6



### Specification

Lumen	1000lm	Switch	Slide switch
Runtime	about 120min	Reflector	OP Aluminum Alloy
LED	CREE XM-L T6	LED Color	white 6500~7300k
Irradiation Distance	200m	Body Color	black
Waterproof	100m	Size	250*48*32mm
Battery	18650*2PC	Weight	260g

# Diving Series

## H8



### Specification

Lumen	800lm	Mode	high-med-low-strobe
Runtime	about 60min	Reflector	SMO Aluminum Alloy
LED	CREE XM-L2 T6	LED Color	white 6500~7300k
Irradiation Distance	300m	Body Color	black
Waterproof	100m	Size	143*38*30mm
Battery	18650*1PC	Weight	165g



# Diving Series

## H9



### Specification

Lumen	1000lm	Mode	high-med-low-strobe
Runtime	120min(26650*2) 60min(18650*2)	Reflector	OP Aluminum Alloy
LED	CREE XM-L T6	LED Color	white 6500~7300k
Irradiation Distance	300m	Body Color	black
Waterproof	150m	Size	205*48*35mm
Battery	18650/26650*2PC	Weight	385g



# Diving Series

## HD10



### Specification

Lumen	3100lm	Mode	high-med-low-strobe
Runtime	about 180min	Reflector	SMO Aluminum Alloy
Bulb type	HID xenon-lamp	Voltage	12.6V
Irradiation Distance	300m	Body Color	black
Waterproof	100m	Size	257*73*78mm
Battery	built in 6600mAh battery	Weight	1.56kg



# Diving Series

## H01



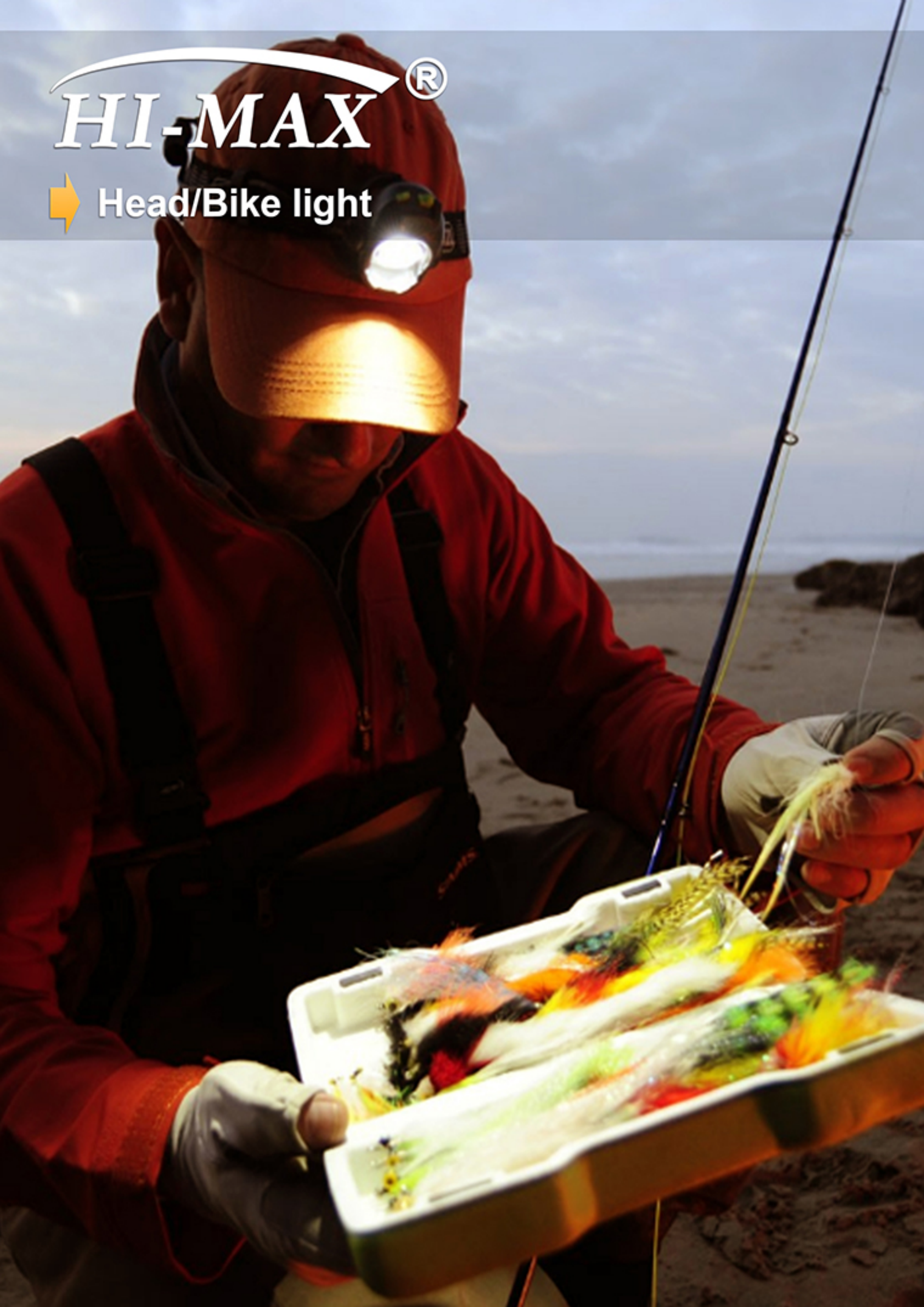
## Specification

Lumen	3500lm	Mode	high-med-low-strobe
Runtime	about 180min	Reflector	SMO Aluminum Alloy
LED	3*CREE XM-L2 U2	LED Color	white 6500~7300k
Irradiation Distance	300m	Body Color	black
Waterproof	150m	Size	75.5*66mm
Battery	26650*3PC	Weight	827.8g



**HI-MAX**®

➔ **Head/Bike light**





# Head/bike light

T5



## Specification

Lumen	1000lm	Output	8.4v
Runtime	about 80min	Reflector	OP Aluminum Alloy
LED	CREE XM-L U2	LED Color	white 6500~7300k
Irradiation Distance	200m	Body Color	black
Mode	high-med-strobe	Size	50*45*40mm
Battery	battery pack	Weight	123g

# Head/bike light

## T6



### Specification

Lumen	1800lm	Output	8.4v
Runtime	about 80min	Reflector	SMO Aluminum Alloy
LED	3*CREE XM-L U2	LED Color	white 6500~7300k
Irradiation Distance	200m	Body Color	black
Mode	high-med-low-strobe	Size	60*45*55mm
Battery	battery pack	Weight	136g



# Head/bike light

T7



## Specification

Lumen	1600lm	Output	8.4v
Runtime	about 150min	Reflector	SMO Aluminum Alloy
LED	2*CREE XM-L U2	LED Color	white 6500~7300k
Irradiation Distance	100m	Body Color	red
Mode	high-med-low-strobe	Size	60*42*25mm
Battery	18650*4PC	Weight	93.5g



**HI-MAX**®

➔ **HID flashlight**





# HID flashlight

## HID5



### Specification

Lumen	3500lm	Output	12v
Runtime	about 70min	Reflector	SMO Aluminum Alloy
HID	HID xenon-lamp	LED Color	white 6000k
Irradiation Distance	1000m	Body Color	black
Mode	high-med-low-OFF	Size	70*310*48mm
Battery	Li-ion 4400mAh	Weight	726.4g



# HID flashlight

## HID6



### Specification

Lumen	3500lm	Output	12v
Runtime	about 75min	Reflector	SMO Aluminum Alloy
HID	HID xenon-lamp	LED Color	white 6000k
Irradiation Distance	1000m	Body Color	black
Mode	high-med-low-OFF	Size	73*300*48mm
Battery	Li-ion 4400mAh	Weight	694g



# HID flashlight

## HID7



### Specification

Lumen	4500lm	Output	12v
Runtime	about 75min	Reflector	SMO Aluminum Alloy
HID	HID xenon-lamp	LED Color	white 6000k
Irradiation Distance	1000m	Body Color	black
Mode	high-med-low-OFF	Size	73*368*48mm
Battery	Li-ion 6600mAh	Weight	724g



**HI-MAX**®

➔ LED flashlight





# LED flashlight

## LG7



### Specification

.....

- Lumen: 500lm
- Runtime: 60min
- LED: CREE XM-L Q5
- Irradiation Distance: 200m
- Mode: high-med-strobe
- Switch: touch-tone
- Reflector: OP Aluminum Alloy
- Battery: 18650\*1PC
- Size: 41\*137\*25mm
- Weight: 118.7g

## LT5

### Specification

.....

- Lumen: 225lm
- Runtime: 60min
- LED: CREE XM-L Q5
- Irradiation Distance: 200m
- Mode: high-med-strobe
- Switch: touch-tone
- Reflector: SMO Aluminum Alloy
- Battery: 18650\*1PC
- Size: 46\*179\*25mm
- Weight: 219.4g



# LED flashlight

## LT6

### Specification

.....

- Lumen: 600lm
- Runtime: 90min
- LED: CREE XM-L U2
- Irradiation Distance: 300m
- Mode: high-med-strobe
- Switch: touch-tone
- Reflector: SMO Aluminum Alloy
- Battery: 18650\*1PC
- Size: 46\*150\*25mm
- Weight: 150g



## LT7

### Specification

.....

- Lumen: 600lm
- Runtime: 90min
- LED: CREE XM-L U2
- Irradiation Distance: 300m
- Mode: high-med-strobe
- Switch: touch-tone
- Reflector: SMO Aluminum Alloy
- Battery: 18650\*1PC
- Size: 37\*150\*25mm
- Weight: 141.7g





# LED flashlight

## LZ7



### Specification

- Lumen: 200lm
- Runtime: 60min
- LED: CREE XM-L T6
- Irradiation Distance: 200m
- Mode: high-med-low-SOS-strobe
- Battery: 18650\*1PC
- Size: 35\*173\*30mm
- Weight: 132.7g

### Specification

- Lumen: 200lm
- Runtime: 60min
- LED: CREE XM-L U2
- Irradiation Distance: 200m
- Mode: high-med-low-SOS-strobe
- Battery: 18650\*1PC
- Size: 30\*117\*23mm
- Weight: 88.1g

## LZ8



## LS7



### Specification

- Lumen: 500lm
- Runtime: 60min
- LED: CREE XM-L T6
- Irradiation Distance: 200m
- Mode: high-med-low-SOS-strobe
- Battery: 18650\*2PC
- Size: 63\*245\*25mm
- Weight: 267.3g

# HI-MAX<sup>®</sup>

➔ Accessiores





# ACCESSORIES

## 400009



Type: Samsung core 26650 Li-ion battery  
Voltage: 3.7v~4.2V  
Capacity: 4000mAh  
Protection board: YES  
Size: 69\*26mm  
Weight: 92g

## 400010



Type: Panasonic 18650 Li-ion battery  
Voltage: 3.7v~4.2V  
Capacity: 3100mAh  
Protection board: NO  
Size: 65\*18mm  
Weight: 50g

## 400025



Type: Samsung core 18650 Li-ion battery  
Voltage: 3.7v~4.2V  
Capacity: 2400mAh  
Protection board: YES  
Size: 68.5\*18.2mm  
Weight: 50g

## 400031



Type: Samsung core 18650 Li-ion battery  
Voltage: 3.7v~4.2V  
Capacity: 2200mAh  
Protection board: YES  
Size: 68.5\*18.2mm  
Weight: 50g



# ACCESSORIES

## 400035



Type: Panasonic 18650 Li-ion battery  
Voltage: 3.7v~4.2V  
Capacity: 3400mAh  
Protection board: NO  
Size: 65\*18mm  
Weight: 50g

## 400036



Type: Panasonic 18650 Li-ion battery  
Voltage: 3.7v~4.2V  
Capacity: 2700mAh  
Protection board: NO  
Size: 65\*18mm  
Weight: 50g

## 400037



Type: Samsung core 18650 Li-ion battery  
Voltage: 3.7v~4.2V  
Capacity: 2600mAh  
Protection board: NO  
Size: 65\*18mm  
Weight: 50g

## 400038



Type: Panasonic 18650 Li-ion battery  
Voltage: 3.7v~4.2V  
Capacity: 3100mAh  
Protection board: YES  
Size: 68.2\*18.5mm  
Weight: 50g



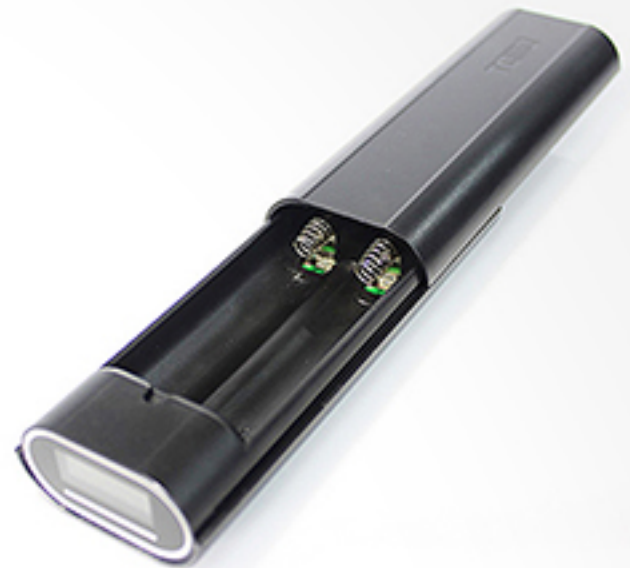
# ACCESSORIES

**400032**



Type: TOMO USB interface charger  
Voltage: 5V  
Current: 1A  
Size: 85\*130\*25mm  
Weight: 140g

**400033**



Type: TOMO USB interface charger  
Voltage: 5V  
Current: 1A  
Weight: 30\*130\*25mm  
Weight: 75g

**400001**



Type: Samsung core 18650 Li-ion battery  
Voltage: 3.7v~4.2V  
Capacity: 2600mAh  
Protection board: YES  
Size: 68.5\*18.2mm  
Weight: 50g

**400008**



Type: Samsung core 18650 Li-ion battery  
Voltage: 3.7v~4.2V  
Capacity: 3000mAh  
Protection board: NO  
Size: 65\*18mm  
Weight: 50g



# ACCESSORIES

## 200003



Type: 18650 Li-ion battery charger  
Voltage: 3.6~7.4V  
Current: 0.6A  
Size: 84.5\*32.5\*37mm  
Weight: 66.6g

## 200011



Type: 18650 Li-ion battery charger  
Voltage: 4.15~4.25V  
Current: 0.6A  
Size: 112\*46\*28mm  
Weight: 66.6g

## 200017



Type: 18650/26650 Li-ion battery charger  
Voltage: 5~5.4V  
Current: 0.5A  
Size: 123\*58\*30mm  
Weight: 69g

## 200018



Type: 18650 Li-ion battery charger  
Voltage: 4.15~4.25V  
Current: 0.6A  
Size: 103\*41\*38mm  
Weight: 34.3g