

SPRING
2016



MAXPEDITION[®]

ADVANCED GEAR RESEARCH

MAXPEDITION

p4
Packs



FIELD-TESTED
Proven By
Seasoned Experts

p16
Pouches



p21
Hardware



LAB-TESTED
Verified With
Scientific Data



p24
Features

**ESTABLISHED
2003**

AGRTM

ADVANCED GEAR RESEARCH

The Spring 2016 launch of the Advanced Gear Research (AGR) program provides a glimpse into the future of the Maxpedition brand.

Uncompromising durability, combined with modernized aesthetics and a broadened palette of custom materials and components, elevate Maxpedition equipment to a new level of quality, innovation, and sophistication.

With the implementation of expanded factory production, in-line & end-line quality checks, independent quality assurance, state-of-the-science laboratory testing, and all-environment field trials, Maxpedition is poised to meet and exceed the expectations of its discerning clientele.

Founded in 2003, Maxpedition successfully optimized the design ethos of American military-grade MOLLE gear to suit the needs of everyday life and popularized its functionality to a global audience. Often imitated but never equaled, genuine Maxpedition gear is the benchmark against which others are compared, and it is trusted by special forces operators, law enforcement officers, adventure travelers and prepared citizens around the world.

Now Maxpedition transcends the standards it set for the industry.

The first and best victory is to conquer self.
-Plato

MAXPEDITION



Model RFC

RIFTCORE™

Overall: 11 x 9 x 18 in | 27.9 x 22.9 x 45.7 cm
Volume: 1400 cu in | 23 L

RFCBLK
Black

RFCGRY
Gray

RFC TAN
Tan

- Ergonomic backpack with quick release yoke-style straps
- Adjustable sternum strap
- Strap-down area in loop-lined middle compartment
- Stowable padded waist belt with gear loops
- Forward cinching waist belt adjustment
- Quadruple side compression
- Dual hydration ports
- Lockable main compartment
- Ample internal organization
- Custom molded fleece-lined semi-rigid EVA pocket
- Two-way access to fully loop-lined rear CCW compartment
- Double-sided security lockout strip included





Model GRF

GRIDFLUX™

Overall: 10 x 8 x 18 in | 25.4 x 20.3 x 45.7 cm
Volume: 1100 cu in | 18 L

GRFBLK
Black

GRFGRY
Gray

GRFTAN
Tan

- Sling pack with reinforced padded shoulder strap
- Stowable swiveling stabilizer strap
- Grab handle to swing pack from back to front
- Dedicated padded tablet compartment
- Lockable main compartment
- Ample internal organization
- Custom molded fleece-lined semi-rigid EVA pocket
- Two locations for CCW placement
- Expandable water bottle pocket with dual zipper garages





Model WLF

WOLFSPUR™

Overall: 11 x 7 x 13 in | 27.9 x 17.8 x 33.0 cm
Volume: 670 cu in | 11 L

WLFBLK
Black

WLFGRY
Gray

WLF TAN
Tan

- Crossbody shoulder bag optimized for concealed carry
- Reinforced seatbelt webbing shoulder strap with quick release
- Excellent CCW access with 17 linear inches of zipper opening
- Fully loop-lined and lockable CCW compartment
- Oversized pull tab secured by double snaps
- Main compartment sized to fit most tablets
- Custom molded fleece-lined semi-rigid EVA pocket
- Expandable water bottle pocket with dual zipper garages
- Stowable adjustable waist belt
- Curved padded shoulder pad included
- Comfortable grab handle reinforced with bartacks





Model EDP

EDGEPEAK™

Overall: 10 x 8 x 15 in | 25.4 x 20.3 x 38.1 cm
 Volume: 910 cu in | 15 L

EDPBLK
Black

EDPGRY
Gray

EDPTAN
Tan

- Fully ambidextrous sling pack
- Reinforced padded shoulder strap with swiveling stabilizer
- Lockable main compartment
- Dedicated padded tablet compartment
- Custom molded fleece-lined semi-rigid EVA pocket
- Two-way access to fully loop-lined rear CCW compartment
- Double-sided security lockout strip included





Model RSM

IRONSTORM™

Overall: 15 x 11 x 26 in | 38.1 x 27.9 x 66.0 cm
Volume: 3780 cu in | 62 L

RSMBLK
Black

RSMGRY
Gray

RSM TAN
Tan

- Adventure travel bag with stowable yoke backpack straps
- Multiple handles for carrying & luggage maneuvering
- Removable single shoulder strap with overbuilt swivel hooks
- Dedicated padded 15" laptop compartment
- Dedicated padded tablet compartment
- Lockable padded main compartment
- Internal compression bib for securing contents
- Zip-up dividers in main compartment for improved organization
- Quick access slip pocket with zipper garage





Model RCD

IRONCLOUD™

Overall: 14 x 10 x 22 in | 35.6 x 25.4 x 55.9 cm
Volume: 2930 cu in | 48 L

RCDBLK
Black

RCDGRY
Gray

RCDTAN
Tan

- Airline carry-on size* adventure travel bag
- Stowable yoke backpack straps
- Multiple handles for carrying & luggage maneuvering
- Removable single shoulder strap with overbuilt swivel hooks
- Dedicated padded 15" laptop compartment
- Dedicated padded tablet compartment
- Lockable padded main compartment
- Internal compression bib for securing contents
- Quick access slip pocket with zipper garage

*Check with your airline for specific requirements





Model CAP

CAP™

COMPACT ADMIN POUCH

Overall: 5 x 2.5 x 7.5 in | 12.7 x 6.4 x 19.1 cm

CAPBLK
BlackCAPGRY
GrayCAPTAN
Tan

- Low-profile when empty yet expands to fit mission critical items
- Narrow footprint ideal for frontal placement on chest rig
- Interior elastic loops and pockets provide organization
- Exterior mounting surface for adding a small pouch
- Top carry handle with D-rings
- Bottom drainage grommets
- Two (2) TacTie® PJC5 polymer joining clips included for modular attachment



Model FRP

FRP™

FIRST RESPONSE POUCH

Overall: 6 x 2.5 x 9 in | 15.2 x 6.4 x 22.9 cm

FRPBLK
BlackFRPGRY
GrayFRPTAN
Tan

- Updated interpretation of the traditional blow-out medical pouch
- Dual zippered full-length opening
- Interior paracord adjuster to set the exact angle of opening
- Interior elastic straps and pockets for retention & organization
- Exterior mounting surface for adding a small pouch
- Frontal 2" x 3.5" loop field for patch adhesion
- Top carry handle with D-rings
- Bottom drainage grommet
- Two (2) TacTie® PJC5 polymer joining clips included for modular attachment





Model DEP

DEP™

DAILY ESSENTIALS POUCH

Overall: 5.5 x 2.5 x 8 in | 14.0 x 6.4 x 20.3 cm

DEPBLK
BlackDEPGRY
GrayDEPTAN
Tan

- Two-compartment pouch designed for everyday carry
- Sized to wear on a belt or to attach to the side of a pack
- Main zippered compartment fits necessities plus a large cellphone
- Frontal zippered compartment with elastic organization
- Exterior mounting surface for adding a small pouch
- Frontal 2" x 3.5" loop field for patch adhesion
- Top carry handle with D-rings
- Bottom drainage grommets
- Two (2) TacTie® PJC5 polymer joining clips included for modular attachment



Model AUP

AUP™

ACCORDION UTILITY POUCH

Overall: 6.5 x 3 x 7.5 in | 16.5 x 7.6 x 19.1 cm

AUPBLK
BlackAUPGRY
GrayAUP TAN
Tan

- Main zippered compartment with accordion-style dividers
- Frontal zippered compartment with elastic organization
- Exterior mounting surface for adding a small pouch
- Top carry handle with D-rings
- Bottom drainage grommets
- Two (2) TacTie® PJC5 polymer joining clips included for modular attachment



Model PHP

PHP™

IPHONE 6/6S POUCH

Overall: 3.5 x 1 x 7 in | 8.9 x 2.5 x 17.8 cm

PHPBLK
Black

PHPGRY
Gray

PHPTAN
Tan



- Lightly padded, felt loop-lined cases
- Sized to fit the Apple iPhone 6/6s and iPhone 6s Plus*
- One (1) TacTie® PJC3 polymer joining clip included for modular or belt attachment

*Apple & iPhone are trademarks of Apple Inc.



Model PLP

PLP™

IPHONE 6S PLUS POUCH

Overall: 4 x 1 x 7.5 in | 10.2 x 2.5 x 19.1 cm

PLPBLK
Black

PLPGRY
Gray

PLPTAN
Tan



Model PJC3

TACTIE® PJC3™

POLYMER JOINING CLIP

PJC3BLK
Black

PJC3GRY
Gray

PJC3TAN
Tan



Open: 8.5 x 1.2 x 0.4 in | 21.5 x 3.0 x 0.9 cm
Closed: 4.2 x 1.2 x 0.4 in | 10.7 x 3.0 x 0.9 cm

Developed by Maxpedition
U.S. and International
Utility and Design
Patents Pending

Model PJC5

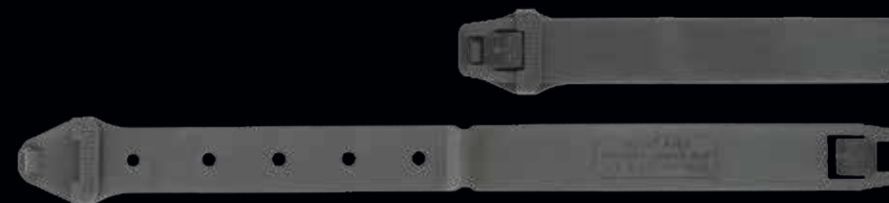
TACTIE® PJC5™

POLYMER JOINING CLIP

PJC5BLK
Black

PJC5GRY
Gray

PJC5TAN
Tan



Open: 12.5 x 1.2 x 0.4 in | 31.6 x 3.0 x 0.9 cm
Closed: 6.2 x 1.2 x 0.4 in | 15.6 x 3.0 x 0.9 cm

- Heavy duty one-piece injection molded design
- Made of durable yet flexible polymer
- Secure connection when properly engaged
- Removable without the aid of tools
- Backwards compatible with legacy pouches

- Head & tail help maintain progress during weaving
- Semi-rigid enough to use as belt loop
- Matte subdued finish
- Easy to clean
- Reusable & field replaceable



IRONSTORM



IRONCLOUD



RIFTCORE



GRIDFLUX



EDGEPEAK



WOLFSPUR



FRP



DEP



CAP



AUP



PLP



PHP



PJC5



PJC3

NECESSITY BEGETS INVENTION



YKK® Zippers with Positive Grip Pulls



Expandable Bottle Holder with Dual Zipper Garages



TacTie® Polymer Joining Clips
U.S. and Int'l Patents Pending



CCW Compartment with Security Lockout Strip



Dual Nylon Fabric Construction
500D Hex Ripstop / 1000D Plainweave



Attachment Lattice System (ATLAS™) - Patent Pending
Cut from 840D Nylon-TPU Composite

▶▶ **FORM FOLLOWS FUNCTION** ◀◀

Reinforced
Yoke Backpack Straps

840D Nylon-TPU Composite
Tapered Pull Loops

Oversized Curvilinear
CCW Compartment Opening

Custom Fabricated
Shapeshift™ Webbing

Bi-Level High Grade
3D Airmesh Backings

Custom Molded Fleece-Lined
Semi-rigid EVA Pocket

»» QUALITY OVER QUANTITY ««

Refined Construction with
Elegant Inlays

Lightweight Anti-Break
Duraflex® Xlite® Buckles

Fray-Resistant
Gossamer™ Mesh

Heavy Duty
Swivel Hook

Very Visible
Grayscale Interior

Skin Friendly
Nylon Seatbelt Webbing



BLK
Black

GRY
Gray

TAN
Tan

TRADITION OF EXCELLENCE

Maxpedition continues to produce legacy styles of bags, packs and pouches as well as knives, tools and morale patches. For detailed availability, please visit:

www.Maxpedition.com



FALCON™
BACKPACK

JUMBO™
VERSIPACK®

SITKA™
GEARSLINGER®

E.D.C. POCKET
ORGANIZER

ROLLYPOLY®
FOLDING DUMP POUCH

SPIKATA™
PEN

EXCELSA™
FRAMELOCK

MSCP™
FIXED BLADE

BOTTLE
PALS™

MORALE
PATCHES

ICONS



CCW Enabled



Fits Tablet



Fits Laptop



Semi-rigid
EVA Pocket



Carry-On Sized



PJC3
TacTie PJC3
Included



PJC5
TacTie PJC5
Included



Teflon® is a registered
trademark of The Chemours
Company FO, LLC, used
under license by Maxpedition

CONTACT

Phone: 310.768.0098
Fax: 310.515.5950
General: Info@Maxpedition.com
Customer Service: CS@Maxpedition.com
Government: Gov@Maxpedition.com
Wholesale: Dealer@Maxpedition.com

VOLUME 24

CONNECT

Maxpedition.com
 www.facebook.com/Maxpedition
 www.twitter.com/Maxpedition
 www.Maxpedition.TV
 www.MaxpeditionInAction.com

DISCLAIMER

Maxpedition will not be held responsible for typographical errors, technical inaccuracies, or omissions. It is the responsibility of the customer to determine the suitability of Maxpedition products for use in his/her particular application, to follow all firearms safety rules, and to abide by all applicable laws.

IP

Maxpedition stylized font and bootprint logo, Maxpedition word mark, Gearslinger, Versipack, Rollypoly and TacTie are federally and/or internationally registered trademarks of Edygear Inc. Products depicted in this catalog are protected by U.S. or international patents and/or patents pending.



Copyright © 2016 Edygear Inc. All Rights Reserved.

MAXPEDITION

AGR



Now this is not the end. It is not even the beginning of the end. But it is, perhaps, the end of the beginning.
-Winston Churchill