

SKYRC



PRODUCT CATALOG 2016 SPRING-SUMMER

FPV Quadcopter
Charger · Power Supply
Speed Controller
Brushless Motor
Measurement · Accessory
Racing Equipment
Pit Tool

Welcome to SkyRC

SkyRC Technology Co.,Ltd is one of the most reputable manufacturers for R/C power system and radio control related products in China.

Our company has been established in year 2008 with R&D team and manufacturing facility located in Shenzhen, China. In addition to providing the highest standards of product expertise and customer service, we have established lasting relationships with retailers and distributors all over the world by being excellently attentive to their needs. We have earned a trusted reputation throughout the industry.

We are proud to announce that SkyRC technology is ISO 9001:2008 certified, as we care customer satisfaction and a good system for continuously improving your business.

Our staff consists of experienced modelers and engineers staying ready to help in selecting the right RC product for you.

Whether you are a seasoned radio control hobbyist or a business owner who is looking to establish win-win strategic partnership with us in this fast growing hobby industry, we look forward to helping you get the right products.

Find us on:



CONTENTS



FPV QUADCOPTER

3-7

SOKAR / SPHINX / OSPREY / Accessory



CHARGER

8-19

Charging Station/Q200/D200/D100/S60/MC3000/NC2600/Ultimate 1000W / Ultimate DUO 1400W / PC500/Quattro Micro / B6 mini / B6AC V2 / e3 / e4+ / e6 / Charge Master



POWER SUPPLY

21

eFUEL 50A 1200W V2 / eFUEL 30A 540W / Adapter 15V 4A / Power Strip



SPEED CONTROLLER

22-26

TORO TS 150W / TORO TS 120W / SkyLink /Wi-Fi Module / Program Box/ TORO BEAST 200 / TORO TS150/ TORO 1S120/ TORO TS160 / TORO TS120 V2 / TORO TS50 / SKYLINK



BRUSHLESS MOTOR

27-29

Brushless motor for Marine & 1/5th Car / Brushless Motor for 1/8th Car / Brushless Motor for 1/10th car



MEASUREMENT DEVICE & ACCESSORY

30

Infrared Thermometer / Helicopter Optical Tachometer / GPS Speed Meter / LipoPal / Watt Meter / Multimeter / Wi-Fi Module / Signal Loss Alarm / Super Mini BEC / Multi Balance Adapter / Dual Port Adapter / S-BEC 3A



RACING EQUIPMENT

31-33

Motor Analyzer / Wheel Balancer / Tire Sander / Corner Weight System / Engine Heater / 1/10 Set-up Wheel / Hyper Booster / Gyro for RC Cars / Power Switch for Nitro RC Car / Setup System



PIT TOOL

34

LED Pit Light / Maintenance Stand / RC Tire Changer / Shock Equalizer / Parts Tray / Shock Holder

SOKAR FPV DRONE



SK-910004

READY TO FLY VERSION

SPECIFICATIONS

Flight Controller	
MPU	Invensense 6050, 3 Axis Gyro, 3 Axis Accelerometer
CPU	STM32F031K4 32-bit ARM Processor
Video Tx	
Transmitter Module	5.8GHz Module
Channels	6 Programmed via Dipswitch
Frequency	5845, 5825, 5805, 5785, 5765, 5745 MHz
Power Output	25mW
Antenna	Cloverleaf Antenna
Power System	
Propellers Size	5"
Brushless Motors	2204-2300KV
Battery	LiPo 2000mAh 3S 30C
ESC Rating	12A continuous, 17A peak

Flight Characteristics	
Flight Time	12 Minutes, Also Depends Upon Flight Style
Maximum Range	Highly dependent on battery, and flying style
Video Camera	
Sensor	300,000 Pixel
Lens	FOV (Field Of View) 135°
FPV Monitor	
Size	4.3" TFT LCD
Resolution	480x272
Channel	6 Channels
Frequency	5845, 5825, 5805, 5785, 5765, 5745 MHz
Weight and Size	
Weight(FPV Drone)	405g(without battery)
Weight(Remote Controller)	614g

FPV QUADCOPTER



REMOTE CONTROLLER & FPV MONITOR



SPHINX

FPV RACER



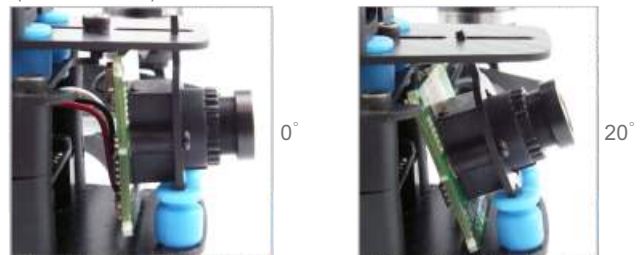
SK-910005

PRO VERSION

Unique Method to Adjust Rotor Angle (0°, 5°, 10°)



FPV Camera Angle Adjustable with Vibration Damper (from 0° To 20°)



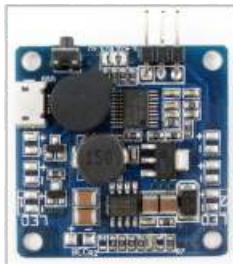
Vibration-Free Camera mount for GoPro



7 Color RGB LED Board



Multi Function Power Hub



- Power Distribution
- BEC 5V Output
- LED Light Controller
- Lost Plane Finder
- Low Voltage Alarm
- Micro USB Power Output for Camera

SPECIFICATIONS

Carbon Fiber Arms

Rotor Angle: 0°, 5°, 10°

FPV Camera Angle: 0-20°

HD Camera Mounting Plate for GoPro (Tilting Angle 20°)

Support 6" props

Dihedral structure for maximal impact resistance

Low drag, for higher speeds

Electronics

Naze32 Acro rev6

20A ESC BLHeli x4

2208 2300KV Motor x4

RGB LED Board x 2

Power Hub

(BEC, LED Light Controller, Lost Plane Finder, Low Voltage Alarm)

FPV Camera

FPV Video Transmitter with Antenna

OSPREY FPV RACER

NEW

Available:
Spring 2016

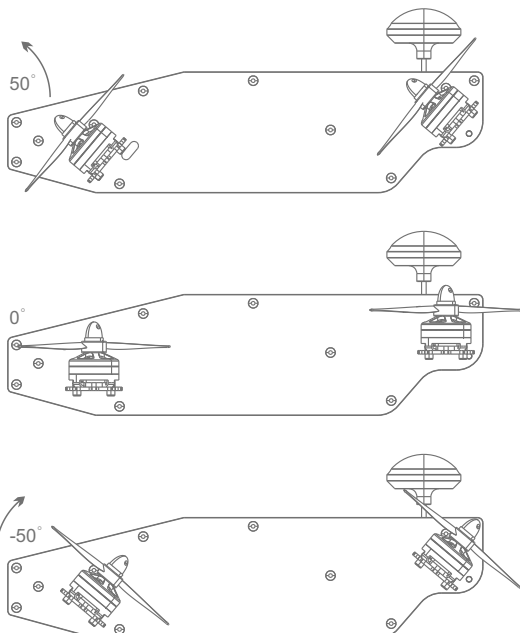


SK-910007

RACING VERSION

Dynamic Rotor Tilting Quadcopter

Osprey Quadcopter offer FPV Pilot an unbeatable flight experience, instant shoot out, sharp cornering, instant air braking and thrilling fast levelled flight with its unique Dynamic Rotor Tilting feature.



SPECIFICATIONS

Carbon Fiber Arm and Frame

Support 6" Props

Dynamic Rotor Tilting System

Electronics

Naze32 Acro rev6

20A ESC BLHeli x4

2204 2300KV Motor x4

LED Board

Power Hub

(BEC, LED Light Controller, Lost Plane Finder, Low Voltage Alarm)

FPV Camera

FPV Video Transmitter with Antenna

FLIGHT CONTROLLER



Naze32 Rev5

SK-600095-01

6 DOF

- STM32F103CBT6 ARM Cortex M3
- MPU6050 MEMS accelerometer + gyro
- Built-in Micro-USB for programming/firmware update

SK-600095-02

10 DOF

- STM32F103CBT6 ARM Cortex M3
- MPU6050 MEMS accelerometer + gyro
- Built-in Micro-USB for programming/firmware update
- E-spiral pipe; HMC 5883L
- Pressure Sensor: MS5611



Naze32 Rev6

SK-600100

- STM32F103CBT6 ARM Cortex M3
- MPU6500 MEMS accelerometer + gyro
- BMP280 Barometer
- Built-in Micro-USB for programming/firmware update
- 36x36mm size, ~5 gram weight w/o headers



CC3D Atom

SK-600096

- STM32F103CBT6 ARM Cortex M3
- MPU6000 MEMS accelerometer + gyro

VIDEO TRANSMITTER



Tx58025

SK-600104-01

- 32 Channels, frequency: 5658-5925Mhz
- One button for band and frequency selection
- Intuitive LEDs frequency display
- 5V power out for FPV camera
- Transmitting distance: <500m(open area)
- 25mW power output



Tx58200

SK-600104-02

- 32 Channels, frequency: 5658-5925Mhz
- One button for band and frequency selection
- Intuitive LEDs frequency display
- 5V power out for FPV camera
- Transmitting distance: <1000m(open area)
- 200mW power output



Tx5820X

SK-600092

- 32 Channels, frequency: 5658-5925Mhz
- Programmed via dip switch
- Power Output: 25mW/200mW selectable
- Antenna: Cloverleaf Antenna

ESC

Speed Controls for Multi-Rotor

- BLHeli firmware specifically designed for Quadcopter
- Refresh rates up to 500Hz
- Pre-programmed for use in Multi-Rotor platforms
- Auto adaption throttle, outstanding motor compatibility.



Multi-Rotor ESC 12A with BEC



Multi-Rotor ESC 20A OPTO

MULTI FUNCTION POWER HUB

- Power Distribution
- BEC 5V Output
- LED Light Controller
- Lost Plane Finder
- Low Voltage Alarm
- Micro USB Power Output for Camera



SK-600097

FPV MONITOR



- Size: 4.3" TFT LCD
 - Resolution: 480*272
 - Channel: 8 Channels
 - Frequency: 5865, 5845, 5825, 5805, 5785, 5765, 5745, 5725MHz
 - Built in Battery, Charge Via USB
- SK-600092

VIDEO RECEIVER

Rx5832

5.8G AV Receiver with 32 Channel

- Automatic Channel Searching
- 32 Channels Cover F, E, A and R Bands
- LCD Frequency Display
- Small Size and Light Weight
- Dual AV Output
- 6-13V DC Supply
- 5V USB Power Supply



SK-600103

POWER NOISE FILTER

It is a circuit used to suppress the noise in the power source created by ESC and brushless motor. Power noise filter can clean the power and reduce video noise interference.

- Max. Input Voltage: 16V
- Max. Current: 2A
- Net Weight: 8g
- Size: 35x13x12mm



SK-600098

RGB LED BOARD

This LED board gives you an eye-catching effect when you put it on your FPV drone. Seven Colors are selectable by simply change the dip switch.

- SK-600101-01
- Input Voltage: 4-6V DC
 - Size: 42x10mm
 - Net Weight: 1.5g

- SK-600101-02
- Input Voltage: 10-13V DC
 - Size: 42x10mm
 - Net Weight: 1.5g



MOTOR

X2204 / X2206 / X1806 / X2208

Better Material

- CNC Machined T6 Billet Aluminum Heatsink Can for Impressive and Durable Appearance
- High Quality Bearings for Less Resistance
- High Purity Copper Windings for Maximum Conductivity

Better Construction

- Leaf-shaped Front Cap for Better Heat Dissipation
- Silicon Cable for Easy Cut and Neat Wiring

Better Craft

- Balance Correction Before Leaving Factory for Best Balance While Running

Item	Item	KV(RPM/Volt)	Voltage	No Load Current	Shaft(mm)	Rotor Poles	Stator	Weight	Length	Diameter
X1806 SK-400018-01	CW (SK-400018-02)	2300KV	2-4S LiPo	0.7A@12V	Φ2	14	12	18g	30mm	23mm
	CCW (SK-400018-03)									
X2204 SK-400017-01	CW (SK-400017-02)	2300KV	2-3S LiPo	0.8A@12V	Φ3	14	12	26g	30.5mm	28mm
	CCW (SK-400017-03)									
X2208 SK-400020-01	CW (SK-400020-03)	1500KV	3-4S LiPo	0.9A@12V	Φ3	14	12	36g	33mm	28mm
	CCW (SK-400020-04)									
	CW (SK-400020-05)	2000KV	2-3S LiPo	0.9A@12V	Φ3	14	12	39g	33mm	28mm
	CCW (SK-400020-06)									

CHARGING STATION

for Phantom3 Smart Battery

NEW

Available:
Spring 2016



FEATURES

- Four Channels Charge 4 Phantom3 Smart Batteries Simultaneously
- Three Working Modes: Charge, Storage and Cycle
- Two LEDs Indicates Percentage and Voltage
- LED and Audible Sound Indicates Charging Status
- Nine LEDs Indicates Output Power From Minimum to Maximum
- Smart Ventilation System
- Dual 5V/2.1A USB Output for Smart Phone and Tablet
- Dual 19V/2A DC Output for Radio Transmitter
- Portable with Handle



SPECIFICATIONS

Input Voltage	AC 100-240V
Max. Charge Power	100W×4
Max. Discharge Power	10W×4
Working Mode	Charge/Storage/Cycle
USB Power Output	2×5V 2.1A
DC Power Output	2×19V 2A
Dimensions(LxWxH)	255×142×180mm
Weight	3215g



Digitron And LED Display



Dual USB & DC Power Output

SK-100118

AC/DC Q200

power
2x100W+2x50W
watt

Quattro Balance Charger / Discharger

A	AC Max Power Set	65W
B	AC Max Power Set	80W
C	AC Max Power Set	35W
D	AC Max Power Set	20W

AC INPUT
 CH A+CH C=100W CH B+CH D=100W
 CH A/CH B: 50-100W CH C/CH D: 0-50W



SK-100104

NEW

Available:
Summer 2016

- Bluetooth Smart 4.0
- PC Control & Monitor
- Battery Meter
- Battery Resistance Meter
- LiHV Mode Available
- Power Distribution



SPECIFICATIONS

Input Voltage	AC100-240V / DC 11-18V	
Charge Circuit Power	DC Input	CH A/CH B: 100W CH C/CH D: 50W
	AC Input	CH A+CH C=100W CH B+CH D=100W CH A/CH B: 50-100W CH C/CH D: 0-50W
Discharge Circuit Power	4 x 10W	
Charge Current Range	CH A/CH B 0.1-10A CH C/CH D 0.1-5A	
Discharge Current Range	0.1-2A x 4	
Current Drian for Balancing	Max 200mA/cell	
Trickle Charging Current	50mA-300mA & OFF	
LiPo/LiFe/LiIon/LiHV Battery Cell Count	1-6S	
NiMH/NiCd Battery Cell Count	1-15S	
Pb Battery Voltage	2-20V	
Dimension	197x182x71mm	
Weight	1325g	

FINALLY, YOUR CHARGER GETS ITS OWN APP

Available on the
App Store

ANDROID APP ON
Google play



Scan with
your Smartphone
to download.



AC/DC D200

Dual Balance Charger / Discharger Soldering Iron

A	AC Max Power Set	150W
B	AC Max Power Set	50 W

200W Power Distribution in AC Mode

FEATURES

- Large Screen LCD(128*64)
- Terminal Voltage Control
- Re-peak Mode for NIMH/NiCd Battery
- Battery Meter
- Battery Internal Resistance Meter
- Soldering Iron:60W MAX,200-450°C
- PC Communications: USB Port for PC Control & Firmware Upgrade
- Smart Phone Control & Monitor Via Wi-Fi Module (SK-600075 Optional Part)
- Two Channels Charge Two Different Kinds of Batteries Simultaneously
- Support Charging Power Distribution Intellectively When Operating with AC Input



SK-100097



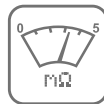
Smart Phone Control & Monitor



PC Control & Monitor



Battery Meter



Battery Resistance Meter



LiHV Mode Available



Power Distribution



Soldering Iron



LiHV Modes



Soldering Iron Cord Receptacle



FINALLY, YOUR CHARGER GETS ITS OWN APP
Smart Phone Control via Wi-Fi Module (both iOS and Android, optional part SK-600075)



Scan with your Smartphone to download.

SPECIFICATIONS

Input Voltage	AC100-240V / DC 11-20V
Charge Circuit Power	DC Input 200W+100W AC Input 200W (support distribution)
Discharge Circuit Power	2×10W
Charge Current Range	0.1-20A
Discharge Current Range	0.1-5A
Current Drian for Balancing	Max 300mA/cell
Trickle Charging Current	50mA-300mA & OFF
LiPo/LiFe/Lilon Battery Cell Count	1-6S
NiMH/NiCd Battery Cell Count	1-15S
Pb Battery Voltage	2-24V
Dimension	197x182x71mm
Weight	1260g



Dual Output

AC/DC D100

Dual Balance Charger / Discharger

power
2x100
watt



SK-100089

- A** AC Max Power Set 70W
- B** AC Max Power Set 30W

100W Power Distribution in AC Mode

FEATURES

- Large screen LCD(128*64)
- Terminal Voltage Control
- Re-peak Mode for NiMH/NiCd Battery
- Battery Meter
- Battery Internal Resistance Meter
- PC Communications: USB Port for PC Control & Firmware Upgrade
- Smart Phone Control & Monitor Via Wi-Fi Module(SK-600075 Optional Part)
- Two channels charge two different kinds of batteries simultaneously
- Support charging power distribution intelligently when operating with AC input



Smart Phone Control & Monitor



PC Control & Monitor



Battery Meter



Battery Resistance Meter



LiHV Mode Available



Power Distribution



SPECIFICATIONS

Input Voltage	AC:100-240V / DC 11-18V
Charge Circuit Power	DC Input 2 x 100W AC Input 100W (support distribution)
Discharge Circuit Power	2x10W
Charge Current Range	0.1-10A
Discharge Current Range	0.1-5A
Current Drian for Balancing	Max 200mA/cell
Trickle Charging Current	30mA-300mA & OFF
LiPo/LiFe/Lilon Battery Cell Count	1-6S
NiMH/NiCd Battery Cell Count	1-15S
Pb Battery Voltage	2-20V
Dimension	148x130x62mm
Weight	780g

FINALLY, YOUR CHARGER GETS ITS OWN APP

Smart Phone Control via Wi-Fi Module (both iOS and Android, optional part SK-600075)



Scan with your Smartphone to download.

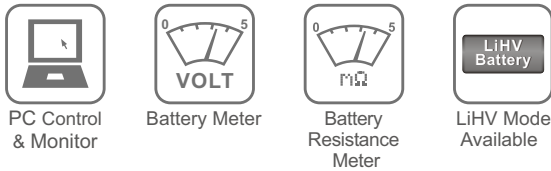


60W/6A S60

AC Balance Charger / Discharger

FEATURES

- Compact size and stylish design
- Terminal voltage control
- LiHV mode available
- Re-peak mode for NiMH/NiCd battery
- Battery meter
- Battery internal resistance meter
- PC communications: USB port for PC control & firmware upgrade
- Over temperature protection, over capacity protection, short circuit protection, reverse polarity protection



SPECIFICATIONS

Input Voltage	AC100-240V
Charge Circuit Power	Max. 60W
Discharge Circuit Power	10W
Charge Current Range	0.1-6A
Discharge Current Range	0.1-2A
Current Drian for Balancing	Max 200mA/cell
Trickle Charging Current	50mA-300mA & OFF
LiPo/LiHV/LiFe/Lilon Battery Cell Count	2-4S
NiMH/NiCd Battery Cell Count	6-8S
Pb Battery Voltage	6-12V
Dimension	112x106x52mm
Weight	310g

SK-100106



AC 100-240V Input



Temperature Threshold



Built-in Cooling Fan



MC3000

MULTI-CHEMISTRY

Universal Battery Charger & Analyzer



4.0 Bluetooth™



SK-100083

NEW

Available: Spring 2016



Multi-Chemistry



Powerful & Accurate



Dot Matrix Display



Rich User Interface



Easy Programmability



Tilt Stand



Maximum Safety



APP Control



PC Control

SPECIFICATIONS

Input Power	DC 11-18V/4A
Charge Current Range	0.05-3.00A
Discharge Current Range	0.05-2.00A
Max. Charge Power	50W
Max. Discharge Power	15W
Battery Capacity	100-50000mAh
Operating Temperature	0-40°C
USB Power Output	DC 5V/2.1A
Dimensions(LxWxH)	200x124x69mm
Weight(Without DC Adaptor)	616g

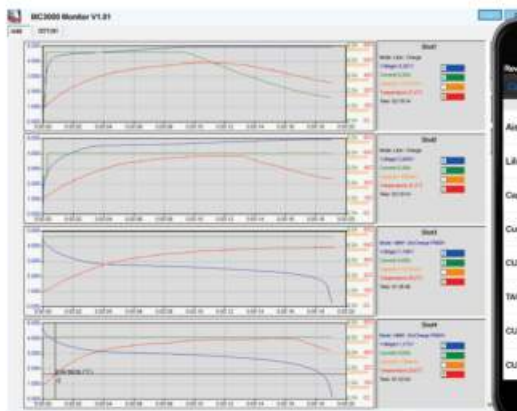
BATTERY CHEMISTRY TYPE

NiMH / NiCd / NiZn / Eneloop / Lithium-Ion / Lilo4.35 / LiFePO4

BATTERY SIZE

AAAA, AAA, AA, Sub-C, C, D**, 10340, 10350, 10440, 10500, 12340, 12500, 12650, 13450, 13500, 13650, 14350, 14430, 14500, 14650, 16340, RCR123, 16500, 16650, 17350, 17500, 17650, 17670, 18350, 18490, 18500, 18650, 18700, 20700, 21700, 22500, 22650, 25500, 26500, 26650, 32600**, 32650**

**2 cells can fit together with 2 other batteries



Available on the **App Store**

ANDROID APP ON **Google play**



Scan with your **iPhone** to download.



Scan with your **Android** to download.

NC2600

MULTI FUNCTIONS

AA/AAA NiMH BATTERY Charger & Analyzer



4.0
Bluetooth™



NEW

Available:
Spring 2016

SK-100113

Made for

iPod iPhone iPad

Available on the
App Store

ANDROID APP ON
Google play



Scan with
your iPhone
to download.



Scan with
your Android
to download.

SPECIFICATIONS

	Stand Alone Mode	Smart Phone Control Mode
Charging Current	0.2-2.6A	0.2-2.6A
Delta Peak	5mV	3-15mV
Discharging Current	0.1-1.0A	0.1-1.0A
Discharging Termination Voltage	0.9V	0.5-1.0V
Battery Capacity Range	500mAh-3500mAh	500mAh-3500mAh
No. of Cycle	1-12	1-12
Top off Charging Current	100mA	100mA
Maintenance Charging Current (Trickle)	30mA	OFF, 10mA-50mA
Temperature Protection	55°C	55-70°C
DC Adaptor Input Power	12V/2.5A	
USB Power	5V/2.1A	
Weight (Without DC Adaptor)	380g	
Dimensions(LxWxH)	154x104x50mm	



Ultimate 1000W 40A

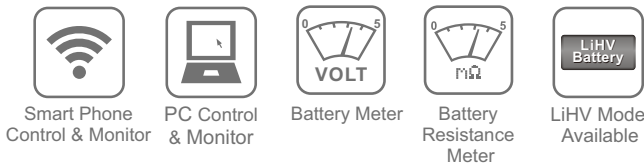
BALANCE CHARGER / DISCHARGER

SPECIFICATIONS

DC Input Voltage	11-30V
Charge Circuit Power	1000W
Charge Current	Max. 40.0A
Balance Port Charge Current	10-500mA
Discharge Circuit Power	80W
Discharge Current	0.1-8.0A
Regenerative Discharge Current	0.1-10.0A
Current Drain for Balancing	Max. 800mA
Trickle Charging Current	50mA-300mA & OFF
LiPo/LiFe/LiIon Battery Cell Count	1-8S
NiMH/NiCd Battery Cell Count	1-20S
Pb Battery	2-24V
Dimension	138x156x76mm
Weight	1240g



SK-100069



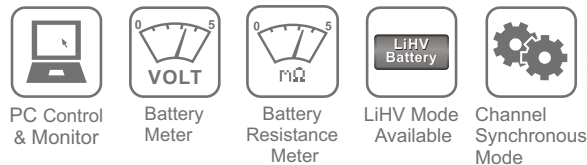
Scan with your Smartphone to download.



Ultimate Duo 1400W / 30A

BALANCE CHARGER / DISCHARGER

2-8s | 1-20s | 2-24v
LiPo/LiFe/LiIon/LiHV | NiMH/NiCd | Lead Acid



SPECIFICATIONS

DC Input Voltage	11-30V
Charge Circuit Power	2x700W
Charge Current	0.1-30.0A
Balance Port Charge Current	10-500mA
Discharge Circuit Power	2x30W
Discharge Current	0.1-5.0A
Current Drain for Balancing	Max. 800mA
Trickle Charging Current	50mA-300mA & OFF
LiPo/LiFe/LiIon/LiHV Cell Count	2-8S
NiCd/NiMH Battery Cell Count	1-20S
Pb Battery	2-24V



SK-100087



Balance Port for Charging/Discharging

LiPo Charger for Drones PC500

20A Max Current | 500W Max Power | 6S LiPo Cell Count

FEATURES

- Supports 6s LiPo batteries
- Adjustable charge current
- LED digitron indicates realtime data
- Accelerator to activate storage mode

SPECIFICATIONS

Input Voltage	100-240V
Output Power	500W
Charge Current	1.0-20.0A
LiPo Battery Cell Count	6S
Working Modes	Balance Charge Mode Storage Mode
Size	228x139x59.5mm
Weight	1.6Kg



NEW

Available:
Spring 2016

SK-100105



QUATTRO MICRO BATTERY CHARGER

power
4x4
watt



SK-100079

4x1Cell LiPo
for Micro/MX/mCPX

SPECIFICATIONS

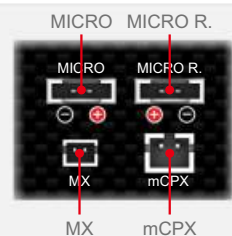
AC Input	100-240V
DC Input	11-15V
Charge Circuit Power	4X4W
Charge Current Range	0.1-1.0A
Battery Type	4X1 cell LiPo
Battery Connector Type	Micro / Micro Reverse /MX / mCPX
Working Temperature	0-50°C
Net Weight	280g
Dimension	132x100x50mm

FEATURES

- Four independent ports can be used at the same time
- Four different kinds of battery connectors in each port
- Four independent functioning charging circuits
- Four independent 4-digital LED displays current and capacity
- LED and audible sound indicate charging status
- Adjustable charging current from 0.1-1A
- AC/DC dual power input
- Efficient ventilation
- Maximum protection: short circuit protection; over current protection; battery reverse polarity protection and DC input voltage protection

4 Different Kinds Of Battery Connectors

4 connectors for Multiple
1S Micro LiPo batteries.





SK-100084

iMAX B6mini Professional Balance Charger/Discharger **6AMP 60Watt**

NEW FEATURES

- Lithium Battery Meter
- Battery Internal Resistance Meter
- Re-Peak Mode for NiMH/NiCd Battery.
- Terminal Voltage Control.
- PC Control & Firmware Upgrade.
- Smart Phone Control & Monitor via Wi-Fi Module (SK-600075 Optional Part)

SPECIFICATIONS

Input Voltage	DC11-18V
Charge Circuit Power	60W
Charge Current Range	0.1-6.0A
Discharge Circuit Power	5W
Discharge Current Range	0.1-2.0A
LiPo/LiHV/LiFe/LiIon Cells	1-6S
NiMH/NiCd Cells	1-15S
Pb battery Voltage	2-20V
Net Weight	233g
Dimensions	102x84x29mm



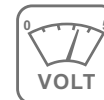
Scan with your Smartphone to download.



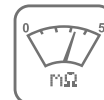
Smart Phone Control & Monitor



PC Control & Monitor



Battery Meter



Battery Resistance Meter



LiHV Mode Available



60Watt / 6AMP

*The APP for B6mini and B6AC is the same.

iMAX B6AC v2 Professional Balance Charger/Discharger

SPECIFICATIONS

AC Input	100-240Volt
DC Input	11-18Volt
Circuit Power	Max.Charge Power 50W Max.Discharge Power 5W
Charge Current Range	0.1-6.0A
Discharge Current Range	0.1-2.0A
Current Drain for Balancing	200mA/cell
NiCd/NiMH Battery Cell Count	1-15cells
LiPo/LiHV/LiFe/LiIon Cell Count	1-6cells
Pb Battery Voltage	2-20V
Net Weight	632g
Dimension	135x144x36mm



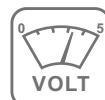
SK-100008



Smart Phone Control & Monitor



PC Control & Monitor



Battery Meter



Battery Resistance Meter



LiHV Mode Available



AC/DC Dual Power



e3 AC INPUT BALANCE CHARGER

2-3s | LiPo
Cell Count | Battery Type

SPECIFICATIONS

AC Input	100-240V
Battery Type	LiPo
Cell Count	2-3 cells
Charge Current	1.2A Max
Cell Terminate Voltage	4.2V
Circuit Power	11W
Dimension	88x57x35mm
Weight	103g

e4+

MULTI CHEMISTRY CHARGER

2-4s | 4-8s
Lithium Battery Cell Count | NiMH Battery Cell Count

LiPo/LiFe/LiHV/NiMH
Battery Type

SPECIFICATIONS

AC Input	100-240V
Battery Type	LiPo/LiFe/LiHV/NiMH
Lithium Battery Cell Count	2-4 cells
NiMH Battery Cell Count	4-8 cells
Charge Current	1A/2A/3A/4A
Circuit Power	30W
Dimension	69.5x110x40.4mm
Weight	103g



NEW

Available: Spring 2016



e6 AC INPUT BALANCE CHARGER

2-6s | LiPo/LiFe
Cell Count | Battery Type

SPECIFICATIONS

AC Input	100-240V
Battery Type	LiPo/LiFe
Cell Count	2-6 cells
Charge Current	1A/2A/4A/5A
Circuit Power	50W
Current Drain for Balancing	200mA
Dimension	82.7x140.5x45.7mm
Weight (Without Cable)	310g

CHARGE MASTER

The free "Charge Master" software gives you unparalleled ability to operate the charger through the computer. You can monitor pack voltage, cell voltage and other data during the charging, view charge data in real-time graphs. And you can initiate, control charging and update firmware from "Charge Master".

Please note different versions of "Charger Master" are compatible with different kinds of chargers,

The "Charge Master V2.*" is compatible with the following chargers,

1000W	1400W	B6AC V2	B6mini	S60
SK-100069	SK-100087	SK-100008	SK-100084	SK-100106

The "Charge Master V3.*" is compatible with the following chargers,

D100	D200
SK-100089	SK-100097

INTRODUCTION



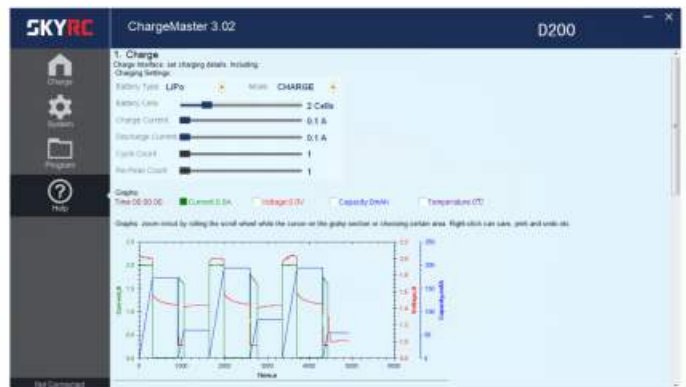
Charge



System



Program



Help

NOTICE

- Each cell voltage, max cell voltage and min cell voltage can only be displayed after the balance socket is connected.
- Please do NOT power off the charger or disconnect the USB from charger and computer while upgrading. Otherwise, it will destroy the charger.

The "Charge Master" can be downloaded from www.skyrc.com.

EFUEL 230W/17A POWER SUPPLY

17A / 230W

SPECIFICATIONS

Input Voltage	100-240V AC
Input AC Frequency	50-60Hz
Output Voltage	13.8V DC±0.2V
Output Current	17A±0.5A
Current Overload Protection	≥ 17.5A 500MS
Input Fuse	5A Fuse
Output Voltage Ripple	<150mV
Power Efficiency	91%
Power Factor	>0.98
Over Temperature Protection	≥ 65°C
Dimensions (LxWxH)	125.7x92.7x50.5mm
Operating Temperature	0-40°C
Cooling Method	Cooling Fan
Operating Humidity	0-90%
Net weight	602g



Worldwide AC Voltage

PFC Power Factor Correction

RS16 16 180Watt AMP

Multi-Chemistry Balance Charger/Discharger

SPECIFICATIONS

DC Input	11-18Volt
Charge Circuit Power	DC 180W
Discharge Circuit Power	30W
Charge Current Range	0.1-16A
Discharge Current Range	0.1-8A
NiMH/NiCd Battery Cell Count	1-15Cells
LiPo/LiFe/LiIon Cell Count	1-6Cells
Pb Battery Voltage	2-20V
Current Drain for Balancing	200mA/cell
Dimension	92x111.4x50mm
Net Weight	405g

Compatible with Charger Master V1.**



SK-100078

RSTW Tire Warmer

SPECIFICATIONS

Input	11-18V
Temperature Range	20-80°C, 100°C (68-176°F, 212°F)
Keys	Joystick - ▲Up, ▼Down, ◀Left, ▶Right
Dimensions	92x111.4x50mm
Weight	440g / 15.52oz

* Atmospheric conditions may affect the final tire temperature.



SK-600064



Direct Plug Docking System

DC output on the top of the eFUEL 230W/17A power supply is designed for docking into the RS16 Charger and RSTW Tire Warmer via dual banana connectors.

EFUEL 1200W POWER SUPPLY V2



50A 1200W

SPECIFICATIONS

Voltage	100-240V AC
Input AC Frequency	50-60Hz
Output Voltage	15-30V DC±0.5V
Output Current	50A±1A
Current Overload Protection	≤ 51A 500MS
Input Fuse	20A Fuse
LCD Display	Voltage Precision ±0.3V Current Precision ±0.5A
Output Voltage Ripple	<300mV
Power Efficiency	89%
Power Factor	>0.98
Over Temperature Protection	<65°C
Cooling Method	Cooling Fan
Operating Temperature	0-40°C
Operating Humidity	0-90%
Dimensions (LxWxH)	305x170x85mm
Net weight	3.08kg



Worldwide AC Voltage
PFC Power Factor Correction

SK-200015

EFUEL 30A POWER SUPPLY

SPECIFICATIONS

Voltage	100-240V AC
Input AC Frequency	50-60Hz
Output Voltage	12-18V DC±0.5V
Output Current	30A±1A
Current Overload Protection	≤ 31A 500MS
Input Fuse	10A Fuse
LCD Display	Voltage Precision ±0.3V Current Precision ±0.3A
Output Voltage Ripple	< 150mV
Power Efficiency	89%
Power Factor	>0.98
Over Temperature Protection	<65°C
Cooling Method	Cooling Fan
Operating Temperature	0-40°C
Operating Humidity	0-90%
Dimensions (LxWxH)	218x139x59.5mm
Net Weight	1.62kg



Worldwide AC Voltage
PFC Power Factor Correction

SK-200013

AC ADAPTER

PSU-60W 15V 4A

- High Performance Power Supply
- Input: AC100-240V 50/60Hz 1.5A
- Output: DC 15V 4A
- Dimension: 113.5x55.7x32.7mm
- Net Weight: 210g



SK-200008

POWER STRIP

- Five Channels
- Fuse Protected
- With ON/OFF Switch
- USB Power Output: 5V1A
- Dimension: 160x60x41.1mm
- Net Weight: 250g



SK-600009

SPEED CONTROLLER / INNOVATION SETTING DESIGN



SPECIFICATIONS

Constant/Burst Current	150A/950A
Motor Compatible	Brushless Sensorless Motor
Car Compatible	1/8 Buggy and Truck
Motor Limits	KV ≤ 3000 (4 cells LiPo) KV ≤ 2400 (6 cells LiPo)
Resistance	0.0002ohm
Battery Cell Count	6-18S NiMH or 2-6S LiPo
BEC Output	6V@5A
Size	58x41x38mm (LxWxH)
Weight	95g (w/o wire)
Fan	5V@0.3A



SPECIFICATIONS

Constant/Burst Current	120A/760A
Motor Compatible	Brushless Sensorless Motor
Car Compatible	1/10 on-road/buggy/truggy/SCT/monster
Motor Limits	4-6S NiMH or 2S LiPo: On-Road/Off-road ≥ 5.5T SCT/Monster KV ≤ 6000 6-9S NiMH or 3S LiPo: On-Road/Off-road ≥ 8.5T SCT/Monster KV ≤ 4000
Resistance	0.0003ohm
Battery Cell Count	4-9S NiMH or 2-3S LiPo
BEC Output	6V@3A
Size	39x38x20mm (LxWxH)
Weight	45g (w/o wire)
FAN	8V@0.2A , MAX 12.6V



INNOVATION SETTING DESIGN

All SkyRC ESC can be programmed by program box, skylink(via PC) and smart phone(via Wi-Fi). With Program Box it is always easy and convenient, while, with skylink and smart phone you could set the parameter precisely.



SkyLink
SK-600013



Wi-Fi Module
SK-600075



Program Box
SK-300046

SPEED CONTROLLER

BUILT IN BEC **TORO BEAST**

1/5th scale



SPECIFICATIONS

Constant/Burst Current	200A/800A
Motor Compatible	Brushless Sensorless Motor
Car Compatible	1/5 Scale Car
Motor Limits	KV<1500KV
Resistance	0.00018ohm
Battery Cell Count	4-8S LiPo
BEC Output	6 / 7.4V@15A
Size(LxWxH)	114x42x34mm



TS150 COMPETITION ADVANCED TIMING SYSTEM

1/8th scale

SPECIFICATIONS

Constant/Burst Current	150A/950A
Motor Compatible	Brushless Sensor & Sensorless Motor
Car Compatible	1/8 Buggy, Truck and Short Course
Motor Limits	KV≤3000 (4 cells LiPo) KV≤2400 (6 cells LiPo)
Resistance	0.0002ohm
Battery Cell Count	6-18S NiMH or 2-6S LiPo
BEC Output	6V@5A
Size	58x41x38mm (LxWxH)
Weight	95g (w/o wire)
Fan	5V@0.3A



TS120 1/12 SCALE BRUSHLESS SENSOR ESC

Built-In DC Booster & Capacitor Module

SPECIFICATIONS

Constant/Burst Current	120A/760A
Motor Compatible	Brushless Sensor & Sensorless Motor
Car Compatible	1/12 On Road competition
Motor Limits	≥3.5T(3 slots, 2 poles, 540 class motor)
Resistance	0.0003ohm
Battery Cell Count	1S LiPo
BEC Output	6V@3A
Size	38.5x37.8x22.5mm (LxWxH)
Weight	50g (without wire)



TS160 COMPETITION

ADVANCED TIMING SYSTEM

1/10th scale BRUSHLESS SENSORED ESC

SPECIFICATIONS

Constant/Burst Current	150A/600A
Motor Compatible	Brushless Sensor & Sensorless Motor
Car Compatible	1/10 and 1/12 all competitions 1/10 and 1/8 crawlers
Motor Limits	2S Lipo or 4-6S NiMH $\geq 3.5T$ (1/10 on-road) $\geq 5.5T$ (1/10 off-road) 3S Lipo or 7-9S NiMH $\geq 5.5T$ (1/10 on-road) $\geq 8.5T$ (1/10 off-road)
Resistance	0.00018ohm
Battery Cell Count	4-9S NiMH or 2-3S LiPo
BEC Output	6V/7.4V@5A, switch
Size	30.6x35.6x22.5mm (LxWxH)
Weight	45g (w/o wire)
FAN	8V@0.2A, MAX 12.6V



NEW FEATURES

- Both Motor Wiring C-B-A and A-B-C Works.
- Compatible with SkyLink Software V2

UPGRADE VERSION WITH ALUMINUM CASE



Black
SK-300062-02



Champagne Gold
SK-300062-03



Blue
SK-300062-01

TS50 SENSORED ESC 1/10th scale

SPECIFICATIONS

Constant/Burst Current	50A/300A
Motor Compatible	Brushless Sensor & Sensorless Motor
Car Compatible	1/10 Buggy and Touring Car
Motor Limits	4-6S NiMH or 2S LiPo $\geq 8.5T$ (1/10 Touring Car) $\geq 11.5T$ (1/10 Buggy)
Resistance	0.0006ohm
Battery Cell Count	4-6S NiMH or 2S LiPo
BEC Output	6V@2A
Size	35.3x32.4x19.7mm (LxWxH)
Weight	60g

TS120^{V2} COMPETITION 1/10th scale

ADVANCED TIMING SYSTEM

SPECIFICATIONS

Constant/Burst Current	120A/760A
Motor Compatible	Brushless Sensor & Sensorless Motor
Car Compatible	1/10 and 1/12 Buggy and Truck 1/10 and 1/8 Crawlers
Motor Limits	5-6S NiMH or 2S LiPo $\geq 3.5T$ (1/10 On-Road) $\geq 5.5T$ (1/10 Off-Road) 8-9S NiMH or 3S LiPo $\geq 5.5T$ (1/10 On-Road) $\geq 8.5T$ (1/10 Off-Road)
Resistance	0.0003ohm
Battery Cell Count	4-9S NiMH or 2-3S LiPo
BEC Output	6V@3A
Size	39x38x20mm (LxWxH)
Weight	45g (w/o wire)
FAN	8V@0.2A, MAX 12.6V

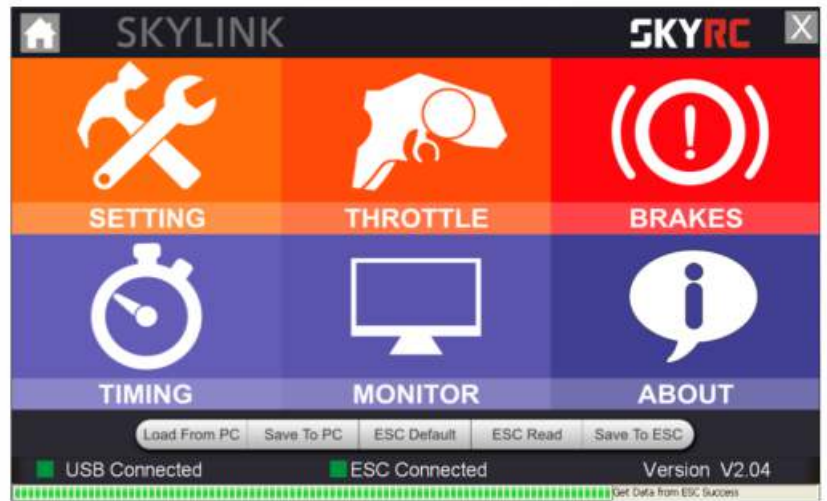


SKYLINK SOFTWARE INTRODUCTION

Version: 2.0

FEATURES

- Compatible with Windows XP, Windows 7, Windows Vista, Windows 8 and Windows 10.
- Four language available (English/German/Chinese/Japanese).
- View, change, and customize the ESC setting precisely.
- Upgrade the latest firmware to the ESC.
- Check Max. temperature of ESC and Motor.
- Check Max Motor RPM.
- Check Motor Timing.



GENERAL MENU



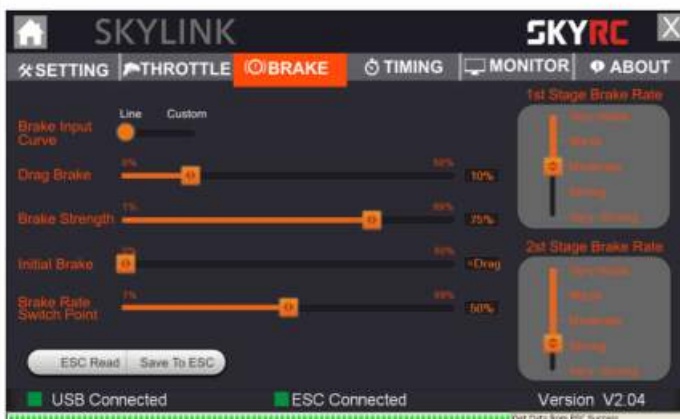
BASIC SETTING

(Running Mode、 Motor Direction、 ESC/ Motor Overheat Protection、 BEC Voltage、 Language、 Reverse Speed/Voltage Cutoff)



THROTTLE SETTING

(Throttle Input Curve、 Throttle Rate Switch Point、 Throttle Dead Band)



BRAKE SETTING

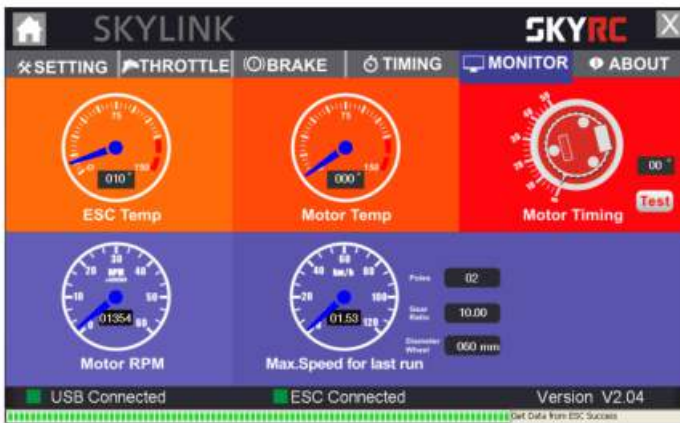
(Brake Input Curve、 Drag Brake、 Brake Strength)



TIMING SETTING

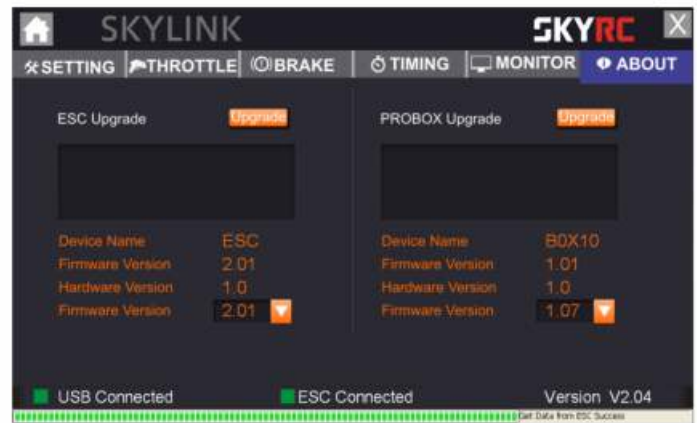
(Motor Timing、 Boost & Turbo Timing)

SPEED CONTROLLER



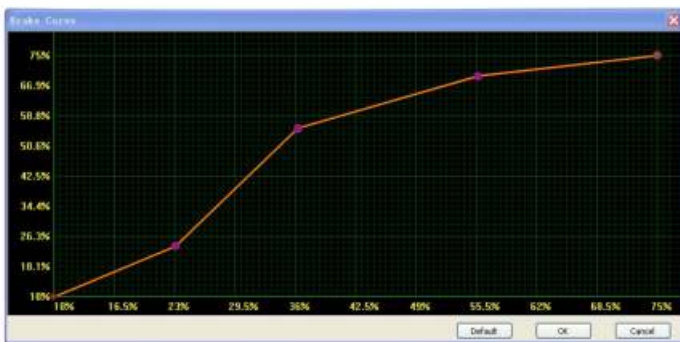
MONITOR

(Checking the Max. temperature of ESC and Motor and Max Motor RMP. Motor Timing Checking)

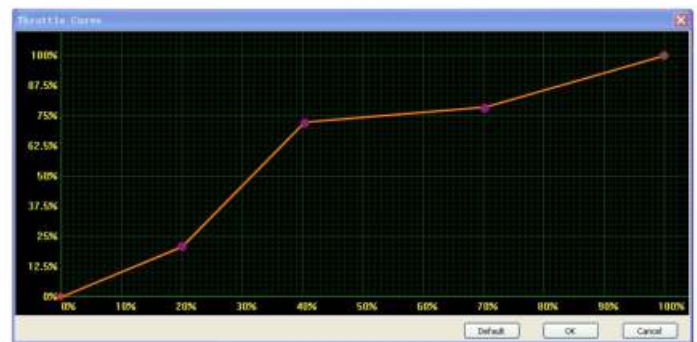


ABOUT

(Checking ESC/Program Box's information, Firmware update)





BRAKE CURVE ADJUSTABLE



THROTTLE CURVE ADJUSTABLE

ESC PROGRAM COMPATIBLE SHEET

Item No.	Item Name				
Item No.	Item Name	SkyLink SK-600013	Program Box SK-300046	Wi-Fi Module SK-600075	SKYLINK Software V2.**
SK-300044-02	TS120 V2	✓	✓	✓	✓
SK-300045-01	TS150	✓	✓	✓	✓
SK-300047-01	Beast 200	✓	✓	X	X
SK-300048-01	1S120	✓	✓	✓	✓
SK-300060-01	TS50	✓	✓	X	✓
SK-300062-01	TS120 Alu Blue	✓	✓	✓	✓
SK-300062-02	TS120 Alu Black	✓	✓	✓	✓
SK-300062-03	TS120 Alu Champagne Gold	✓	✓	✓	✓
SK-300064-01	TS160	✓	✓	✓	✓
SK-300065-01	TS120W	✓	✓	X	✓

Note: 1. SK-300042 Leopard combo set is only compatible with the included program card.
 2. SK-300058 Cheetah combo set is only compatible with the included program card.
 3. SK-300047 Beast 200 is compatible with SKYLINK V1.08 ONLY.

BRUSHLESS MOTOR FOR MARINE AND 1/5TH CAR

WATER COOLED Proteus

FOR MARINE

Proteus Series Motors are designed for large scale RC boat (1.5-2m length).

- 4-Pole Neodymium Magnets Rotor
- 12-Slot Stator, Super Thin(0.2mm) Laminations
- High Quality Bearings
- Super Strength 8mm shaft
- With Water Cooling Shell
- 6 Connectors
- 2 wire configuration-Triangle & Star



DELTA Δ
More RPM



WYE Y
More Torque



WATER
COOLING SHELL

Item	Model No.	KV (RPM/VOLT)	Watts	Max Voltage	Max Current	Internal Resistance (ohm)	Max RPM	Length	Outer Diameter	Net Weight	Shaft Diameter	Shaft Length	Stator Length
SK-400008-01	X524 3Y	600	6300	50V	126A	0.0141	30000	112mm	55.8mm	1035g	$\Phi 8$	30mm	60mm
	X524 3 Δ	1050	6300	28V	225A	0.0035	30000	112mm	55.8mm	1035g	$\Phi 8$	30mm	60mm
SK-400008-02	X524 2Y	910	6300	33V	190A	0.0069	30000	112mm	55.8mm	1035g	$\Phi 8$	30mm	60mm
	X524 2 Δ	1580	6300	19V	331A	0.0029	30000	112mm	55.8mm	1035g	$\Phi 8$	30mm	60mm
SK-400008-03	X520 3Y	730	5280	41V	128A	0.0132	30000	102mm	55.8mm	925g	$\Phi 8$	30mm	50mm
	X520 3 Δ	1280	5280	23V	229A	0.0046	30000	102mm	55.8mm	925g	$\Phi 8$	30mm	50mm

TORO BEAST FOR 1/5TH CAR



COOLING FAN COVER (SK-400008)

- 4-Pole Neodymium Magnets Rotor
- 12-Slot Stator, Super Thin(0.2mm) Laminations
- High Quality Bearings
- Super Strength 8mm shaft
- Can Easily Run Up to 10 Horsepower Range
- CNC Machined T6 Billet Aluminum Heatsink Can
- High Purity Copper Windings for Maximizes Conductivity
- Removable/Replaceable Rotor
- Precision Engineered for Maximum Energy Conversion



Item	Model No.	KV (RPM/VOLT)	Watts	Max Voltage	Max Current	Internal Resistance (ohm)	Max RPM	Length	Outer Diameter	Net Weight	Shaft Diameter	Shaft Length	Stator Length
SK-400008-04	X528 2Y	780	7350	38V	193A	0.0061	30000	112mm	57.8mm	1260g	$\Phi 8$	30mm	70mm

TORO X8 v2 BUGGY

TORO X8 v2 series brushless motor is an upgraded version of TORO X8, equipped with 5mm shaft, 18-slot stator and replaceable 6-pole rotor motors. Compared with X8, it can provide bigger torque and more power.



Item	KV (RPM/VOLT)	Watts	Max Voltage	Max Current	Internal Resistance (ohm)	Max RPM	Turns	Net Weight
SK-400010-11	2400	2600	21V	123A	0.0035	50000	6T	385g
SK-400010-10	2100	2600	24V	108A	0.0048	50000	7T	385g



TORO X8T v2 TRUGGY

TORO X8T V2 series brushless motor is an upgraded version of TORO X8T, equipped with 5mm shaft, 18-slot stator and replaceable 6-pole rotor motors. Compared with X8T, it can provide bigger torque and more power.



Item	KV (RPM/VOLT)	Watts	Max Voltage	Max Current	Internal Resistance (ohm)	Max RPM	Turns	Net Weight
SK-400010-09	1950	3000	26V	115A	0.0054	50000	6T	445g



TORO X8 PRO BUGGY

TORO X8 pro series sensored brushless motor is designed for 1/8 scale buggy, equipped with 5mm shaft, 12-slot stator and replaceable 4-pole rotor.

It supports both sensorless and sensored Speed Controller.



Item	KV (RPM/VOLT)	Watts	Max Voltage	Max Current	Internal Resistance (ohm)	Max RPM	Turns	Net Weight
SK-400009-14	2350	2400	19V	126A	0.0062	45000	1Y	350g
SK-400009-12	2150	2400	21V	114A	0.0071	45000	2D	350g



TORO X8T PRO TRUGGY

TORO X8T pro series sensored brushless motor is designed for 1/8 scale truggy, equipped with 5mm shaft, 12-slot stator and replaceable 4-pole rotor.

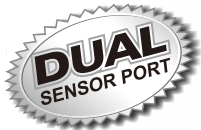
It supports both sensorless and sensored Speed Controller.



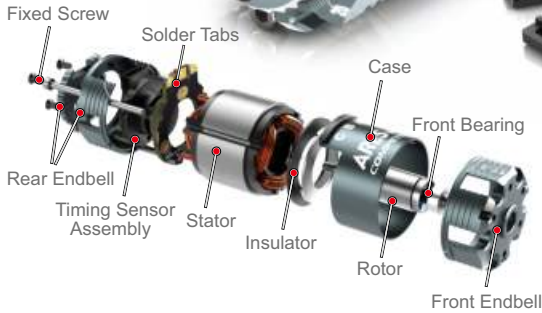
Item	KV (RPM/VOLT)	Watts	Max Voltage	Max Current	Internal Resistance (ohm)	Max RPM	Turns	Net Weight
SK-400009-13	2250	2800	20V	140A	0.0066	45000	410g	1Y
SK-400009-11	2000	2800	23V	121A	0.0079	45000	410g	2D



BRUSHLESS MOTOR FOR 1/10TH CAR



540-Size



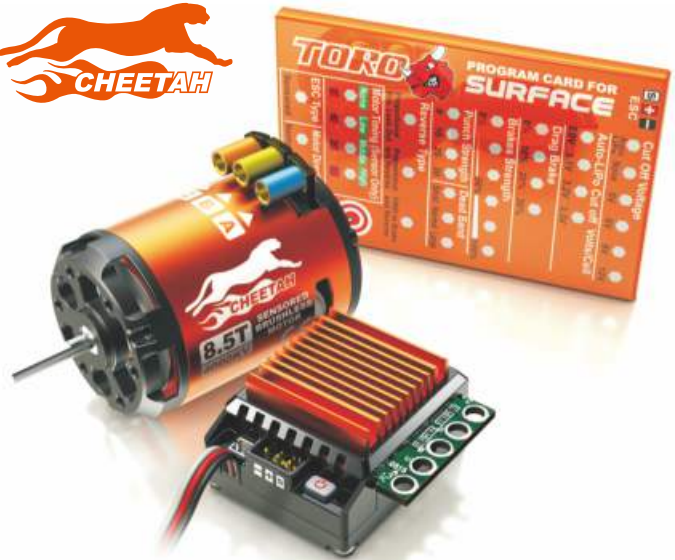
ARES PRO



Item	Turns	Watts	Rotor (mm)	KV (RPM/VOLT)	LIPO	Max Current	Unload Current	Internal Resistance (ohm)	Racing Type
SK-400003-21	3.5	600	12.5*5	9100	1-2S	130A	9.1A	0.0026	MODIFIED
SK-400003-35	4.0	530	12.5*5	8350	1-2S	115A	7.5A	0.0034	MODIFIED
SK-400003-22	4.5	490	12.5*5	7620	1-2S	108A	6.9A	0.0042	MODIFIED
SK-400003-36	5.0	450	12.5*5	7050	1-2S	104A	6.4A	0.0056	MODIFIED
SK-400003-23	5.5	430	12.5*5	6450	1-2S	100A	5.8A	0.0061	MODIFIED
SK-400003-24	6.5	390	12.5*5	5350	1-2S	94A	4.1A	0.0087	MODIFIED
SK-400003-25	7.5	360	12.5*5	4700	1-2S	86A	3.5A	0.0104	MODIFIED
SK-400003-26	8.5	340	12.5*5	4100	1-3S	80A	3.2A	0.0138	MODIFIED
SK-400003-27	9.5	290	12.5*5	3700	1-3S	70A	2.7A	0.0165	MODIFIED
SK-400003-28	10.5	250	12.5*5	3450	1-3S	63A	1.9A	0.0208	MODIFIED
SK-400003-29	11.5	220	12.5*5	3200	1-3S	56A	1.8A	0.0256	MODIFIED
SK-400003-30	13.5	190	12.5*5	2860	1-3S	49A	1.6A	0.0331	MODIFIED
SK-400003-33	10.5	250	12.5*7.2	3600	1-3S	63A	1.6A	0.0208	SPEC
SK-400003-34	13.5	190	12.5*7.2	3050	1-3S	49A	1.3A	0.0331	SPEC
SK-400003-31	17.5	130	12.5*7.2	2200	1-3S	34A	1.0A	0.0514	SPEC
SK-400003-32	21.5	100	12.5*7.2	1760	1-3S	28A	0.8A	0.0875	SPEC

CHEETAH SENSOR COMBO SET V2 BRUSHLESS ESC

Constant/Burst Current	60A/380A
Motor Compatible	Brushless Sensor & Sensorless Motor
Car Compatible	1/10 and 1/12 Buggy, Touring Car and Crawler
Motor Limits	5-6S NiMH or 2S LiPo--≥8.5T(1/10 Touring Car), ≥10.5T(1/10 Buggy) 8-9S NiMH or 3S LiPo--≥10.5T(1/10 Touring Car), ≥13.5T(1/10 Buggy)
Resistance	0.0007ohm
Battery Cell Count	2-3S LiPo or 4-9S NiMH
BEC Output	6V@3A
Size	39x38x20mm (LxWxH)
Weight	30g (w/o wire)
Fan	5V@0.2A, Max 12.6V



ITEM	Cheetah 1/10 Scale Motor	Turns	Watts	KV (RPM/VOLT)	LiPo	Max Current	Unload Current	Internal Resistance (ohm)	Net Weight
SK-300058-06	8.5T	8.5	400	4000	2-3S	70A	3.2A	0.0142	165g
SK-300058-07	10.5T	10.5	300	3250	2-3S	30A	1.9A	0.0213	165g
SK-300058-08	13.5T	13.5	240	2590	2-3S	46A	1.6A	0.0361	165g
SK-300058-09	17.5T	17.5	200	1870	2-3S	32A	1.1A	0.0514	165g
SK-300058-10	21.5T	21.5	150	1600	2-3S	26A	0.9A	0.0875	165g

LEOPARD COMBO SET BRUSHLESS ESC

Constant/Burst Current	60A/380A
Motor Compatible	Brushless & Sensorless Motor
Car Compatible	1/10 Scale Car
Motor Limits	KV<4500KV
Resistance	0.0007ohm
Battery Cell Count	NiMH 4-8 cells & LiPo 2-3 cells & LiFe 2-3 cells
BEC Output	5V,2A
Size	51.6x30x27.4mm(LxWxH)
Weight	78g (w/o wire)
Fan	5V@0.2A

ITEM	Leopard 1/10 Scale Motor	Turns	Watts	KV (RPM/VOLT)	Max Voltage	Max Current	Unload Current	Internal Resistance (ohm)	Net Weight
SK-300042-02	9.0T	9.0T	550	4370	12V	46A	3.4A	0.0127	168g
SK-300042-03	10.0T	10.0T	550	3930	13V	42A	2.9A	0.0155	168g
SK-300042-04	12.0T	12.0T	550	3300	15V	35A	2.2A	0.0221	168g
SK-300042-05	13.0T	13.0T	550	3000	16V	32A	1.9A	0.0258	168g



INFRARED THERMOMETER

- Operation Voltage: AAA battery X 2
- Operation Current: $\leq 40\text{ma}@2.0\text{V}$
- Operation Temperature: $0\text{-}40^{\circ}\text{C}$
- Current Drain: $\leq 25\text{ua}@3\text{V}$
- Precision : $-40^{\circ}\text{C}\text{-}0^{\circ}\text{C} \pm 0.1^{\circ}\text{C}$; $0^{\circ}\text{C}\text{-}60^{\circ}\text{C} \pm 0.5^{\circ}\text{C}$;
 $60^{\circ}\text{C}\text{-}120^{\circ}\text{C} \pm 1^{\circ}\text{C}$; $120^{\circ}\text{C}\text{-}180^{\circ}\text{C} \pm 2^{\circ}\text{C}$;
 $180^{\circ}\text{C}\text{-}240^{\circ}\text{C} \pm 3^{\circ}\text{C}$; $240^{\circ}\text{C}\text{-}360^{\circ}\text{C} \pm 4^{\circ}\text{C}$
- Adjustable Range for Infrared Emission
- Frequency: 0.01-1
- Dimension: $121\text{x}40\text{x}39.6\text{mm}$
- Weight: 75g



SK-500016

HELICOPTER OPTICAL TACHOMETER



SK-500010

- RPM Range: 700-4500RPM
- Accuracy: $\pm 1\text{RPM}$
- Weight: 45g
- 10 Level Aperture Adjustment
- 5 Preset RPM Value
- Super High-speed Electronic Shutter
- Rotary Dial for RPM Value Adjustment
- LCD Display
- Power Supply CR2032 Button Battery

GPS SPEED METER

- 32 Parallel Satellite Searching Channels
- Receiver: L1, 1575.42 MHZ
- Frequency: 1.023 MHZ
- Update Frequency: 1 Hz.
- Antenna Type: Built-in
- Satellite Signal Reception Sensitivity: -159dBm
- Dimensions: $65.7\text{x}39.6\text{x}20.8\text{mm}$ Weight: 41g
- Operating Temperature: 0°C to $+50^{\circ}\text{C}$
- Storage Temperature: -10°C to $+60^{\circ}\text{C}$
- Operating Humidity: 5% to 90%



SK-500002

LIPO PAL

- Applicable Battery Pack: 2-6S LiPo
- Voltage Display Tolerance: $\pm 1.5\%$
- Voltage Display Resolution: 0.01V
- Voltage Display Range: 0-5V
- Balancing Current: 50mA
- Operating Temperature: $10\text{-}+45^{\circ}\text{C}$
- Storage Temperature: $-20\text{-}+60^{\circ}\text{C}$
- Case Size: $70\text{x}38\text{x}11\text{mm}$
- Weight: 23g



SK-500007

WATT METER



SK-500005

- Measuring Ampere, Voltage,
- Wattage Up to 100A,
- Temperature Up to 150°C ,
- Recording Peak Value
- Net Weight: 48g
- Dimension: $51.4\text{x}43\text{x}13.8\text{mm}$

MULTIMETER 7 IN 1

SK-500003



- Watt Meter
- Servo Tester
- Battery Checker
- Optical Tachometer
- Temperature Gauge
- Thrust Calculator
- Battery Internal Resistance
- Net Weight: 85g
- Dimension: $95.3\text{x}72.8\text{x}21.5\text{mm}$

Wi-Fi MODULE

- Size: $60\text{x}30\text{x}10.8\text{mm}$
- LED Indicator: Power / Wi-Fi Status
- Wi-Fi: IEEE802.11b/g/n
- Communication Distance: 30m
- Uart: Baudrate: 4800-15200
- Input: 4.5Vdc~18Vdc
- Power Consumption: 1 Watt Max
- Operating Temperature: $0^{\circ}\text{C}\text{-}40^{\circ}\text{C}$
- Relative Humidity: 10%-90%, Non-Condensing
- Storage Temperature: $-10^{\circ}\text{C}\text{-}70^{\circ}\text{C}$
- Storage Humidity Range: 5%-95%, Non-Condensing
- Connection: 3 Pin Connector for ESC Micro USB for Charger



SK-600075

SIGNAL LOSS ALARM & LOST AIRCRAFT FINDER

- Operating Voltage : 5-6 volts DC
- Alert Level : 85dB
- Protection: IP20
- Storage Temperature: $-10\text{-}50^{\circ}\text{C}$
- Operating Temperature: $0\text{-}40^{\circ}\text{C}$
- Current Consumption : $< 50\text{ mA}$ (Working mode)
 $< 2.5\text{ mA}$ (Non-working mode)
- Weight: 7g
- Dimension: $18.1\text{x}18.1\text{x}12.9\text{mm}$



SK-600073

SUPER MINI BEC 6S LiPo 6V 10A

- Input Voltage: 6-25.2V DC
- Input Idle Current: $\leq 50\text{ma}$
- Output Current: 10A
- Output Voltage: $6\text{V} \pm 0.1\text{V}$
- Over Heat Protection
- Dimension: $23\text{x}23\text{x}15\text{mm}$
- Weight: 30g
- Working Temp: $-20\text{-}65^{\circ}\text{C}$
- Storage Temp: $-10\text{-}70^{\circ}\text{C}$
- Protection: IP54



SK-600055

MULTI BALANCE BOARD ADAPTER



SK-600056

- Cell Count: 2~6S (7.4~22.2V)
- Balance Connector Type: HP/PQ, TP/FP, XH, EH

DUAL PORT SAFE PARALLEL ADAPTER



SK-600071

- Cell Count: 2~8S
- Balance Connector Type: XH
- Fuse Protect
- Over Current Indicator

S-BEC 3A

- Current Output: 3A continuous
5A peak
- Output Voltage: 5V or 6V selectable
- Input Voltage: 5.5V-26V
2 to 6 cells LiPo battery or
5 to 18 cells NiMH/NiCd battery
- Size: $36.5\text{x}18\text{x}8.6\text{mm}$
- Weight: 15grams(with wires)



SK-600011

MOTOR ANALYZER

SPECIFICATIONS

KV Value Accuracy: +/- 3%
Motor Timing Accuracy: +/- 4%
Motor Timing Range: 0-70°
Noise Level Measurement Range : 60dB - 120dB
Dimension: 136.5mm x 80.6mm x 24.5mm
Net Weight: 282gram (Without Cabel)
Supported Motor: Sensor or Sensor-less Brushless Motor (2 Poles to 36 Poles)
Current Drawn Less Than 30A at 8.4V Without Loading
Input Voltage 7.4-8.4V (Suggested to Use 7.4V 2S 1P LiPo Battery)
LCD Display Screen: Blue Backlight Background, White Text, 6 Characters X 2 Lines

- KV Measurement
- Voltage Measurement
- RPM Measurement
- Ampere Measurement
- Motor Timing Checking
- Noise Level
- Hall Effect Sensor Test



KV= 6768 U=7.8V
RPM=53468 I=1.6A

KV / VOLT / RPM / AMP

Motor Timing
Average = 30

Average Motor Timing

Ph.A 30° Ph.B 29° Ph.C 31°

Phase A, B and C Sensor Timing

Noise Level
665dB Peak: 669dB

Noise Level

WHEEL BALANCER



- Dimension: 85x72x71mm
- Weight: 72.5g
- Material: Aluminum



SK-500019-02(Blue)



SK-500019-01(Black)



SK-600072-01(Black)
SK-600072-02(Blue)

RPM LED Indicator

RPM Adjustment Knob

TIRE SANDER

FEATURES

- Rubber tire sander for touring class
- Powerful high torque DC motor with dual metal bearings
- Adjustable RPM of motor
- 8 LEDs indicate tire running RPM
- Light-weight aluminum case
- Quiet operation
- Protection: Input reverse polarity protection
- Tire running rotation can be changed

SPECIFICATIONS

Size	159x70x66mm
Weight	710g
Input Voltage	DC 6V-12V
Minimum Input Current	10A
Material	Aluminum
Power Supply Cable	Silicon Cable with Alligator Clip

CORNER WEIGHT SYSTEM

FEATURES

- Designed for 1/8 buggy and truck, 1/10 buggy and touring car, and 1/12 car.
- Measure the car's corner weight, front and rear distribution, and make adjustment if necessary.
- The maximum weight limit for each scale is 2000 grams (total 8000 grams).
- Measurements can be displayed in gram, oz.
- Highly accurate weight measurement in 0.1g increments (equivalent to 0.01 oz).
- LED screen indicator.
- 4 large, easy to clean aluminum weighing surface and easy to use 3 button operation.
- Powered by 4 x AA batteries (batteries NOT included) or external DC source(6-13.8V).



SPECIFICATIONS

Maximum Weight of Each Scale	2000g
Tolerance	±0.5g
Power Source	4 x AA Batteries (Batteries NOT Included) or External DC Source(6-13.8V)
Main Unit Dimension (L x W x H)	130.4x104.5x35.3mm
Scale Dimension (L x W x H)	59.1x65.1x17.5mm
Net Weight of Main Unit & 4 Scales (Not Including Battery)	354g

ENGINE HEATER

FEATURES

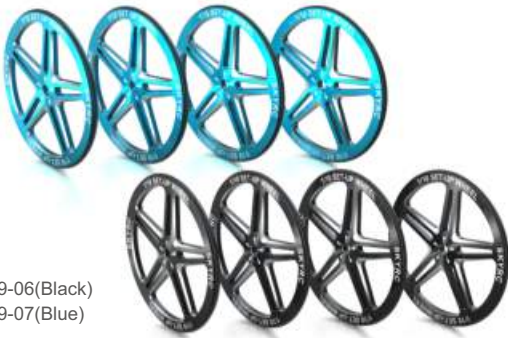
- MCU control heating time and heating power for maximum safety.
- Safety timer: turn off power around 10 minutes automatically
- Built-in temperature sensor: to control the output power of the heater
- LED indicator for status of engine heater.
- 12V DC source with low voltage cutoff.
- Fireproof and heat resistant adjustable cover.
- Fits all .19-.26 RC nitro engines.
- Very small, lightweight and compact for quick and easy storage.
- It's designed to transfer heat effectively and efficiently.
- Access port on top allows you to start and monitor your engines temperatures without having to take the heater off.



SPECIFICATIONS

Input Voltage	12Volt DC
Heating Power	90Watt
Heating Time	Around 10 Minutes
Low Voltage Cutoff	9-10Volt
LED Indicator	Heating(Red LED Stays ON) Low Voltage(Red LED Blinking)
Net Weight	65g
Dimension	Diameter≈63mm Height≈50mm

1/10 SET-UP WHEEL



SK-600069-06(Black)
SK-600069-07(Blue)

HYPER BOOSTER

**Nominal Capacitance
250,000 μ F**

SPECIFICATIONS

- Max Voltage: 10V
- Capacitance: 250,000 μ F
- Working Temp: 0-50°C/32-122°F
- Dimension: 38x22.1x11 mm
- Weight: 18g



SK-600076-01(Black)
SK-600076-02(Blue)

GYRO FOR RC CARS

SK-600068



SPECIFICATIONS

- Operating Voltage: 4-8.4V
- Current Drain: 20mA
- Gyro Sensor: Vibration Structure Gyro
- Operating Temperature Range: -10°C to +45°C
- Dimensions: 21.0 x 21.0 x 11.0mm
- Weight: 3.6g

POWER SWITCH FOR NITRO RC CAR



SPECIFICATIONS

- Input Voltage: 4-12V
- Max. Current: 10 Amp
- Battery Mode: 1. NiHM / NiCad 2. LiPo
- Low Voltage Protection: 5.8-6.2V(LiPo)
- Operating Temperature: 0-50°C
- Weight: \leq 7g

SK-600054



Chassis Droop Gauge
Support Blocks

SK-600069-13(Black)
SK-600069-14(Blue)



Chassis Droop Gauge
-3 to 10mm

SK-600069-17(Black)
SK-600069-18(Blue)



Chassis Droop Gauge
4.0 to 6.6mm

SK-600069-15(Black)
SK-600069-16(Blue)



Chassis Ride Height Gauge
3.8-7.0mm

SK-600069-19(Black)
SK-600069-20(Blue)



Chassis Ride Height Gauge
1.0-4.0mm

SK-600069-21(Black)
SK-600069-22(Blue)

SETUP SYSTEM

Camber / Toe / Steering / Caster Measurement



Carrying Bag Included



SK-600069-12(Blue)

SK-600069-01(Black)



270°
ROTATION



Touch Control



270° Rotation



Max 600 Lumens



Dual Power Input



Package

LED PIT LIGHT

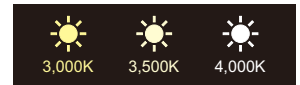
SK-600089-01(Black)
SK-600089-02(Blue)

SPECIFICATIONS

- Input Voltage: DC Power Cable 6-15V
USB Cable 5V/2.1A
- Max. Power: 11W
- Brightness: 180 - 600 lumens, 6 steps
- Color Temperature: 3,000K, 3,500K and 4,000K
- Size: 281x60x314.5mm
- Weight: 460g



6 adjustable brightness
/dimming levels



3 adjustable light color modes

MAINTENANCE STAND

(for 1/8 On Road, 1/10 Buggy)

SK-600069-10(Black)
SK-600069-11(Blue)
Size:165x112x53mm



for
1/8
ON ROAD

for
1/10
BUGGY

MAINTENANCE STAND

(for 1/10 Touring, 1/12 Racing)

SK-600069-08(Black)
SK-600069-09(Blue)



for
1/10
TOURING

for
1/12
RACING

RC TIRE CHANGER

SK-600069-23(Black)
SK-600069-24(Blue)



SHOCK EQUALIZER

SK-600069-25(Black)
SK-600069-26(Blue)



PARTS TRAY

SK-600069-02(Black)
SK-600069-03(Blue)



SHOCK HOLDER

SK-600069-04(Black)
SK-600069-05(Blue)





SKYRC

SKYRC TECHNOLOGY CO., LTD.

4 Floor, Block 6, Meitai Science Park, Guanguang Road, Guanlan Town, Longhua New District, Shenzhen, China. 518110

Tel: +86 755 83860222

Email: info@skycrc.cn

Fax: +86 755 81702090

Web: www.skycrc.com



Printed in China 2016.01

8008-0679-01