








LED LENSER®
2015 PRODUCT CATALOG





-  ledlenserusa.com
-  facebook.com/ledlenserusa
-  twitter.com/ledlenserusa
-  youtube.com/ledlenserusa
-  instagram.com/ledlenserusa

When you can see everything, you can do anything. LED LENSER delivers flashlights and headlamps that put you in control of your situation with innovative, intuitive technology, useful functionality, and powerful performance. We have only the highest standards in production, which means you can depend on quality, clear light and durable construction to work, play, fix, and explore – anytime.

Out-of-the-box thinking led us to create useful, functional features to ensure a light from LED LENSER will give you the quality performance you expect, every time. We know you need a light you can depend on, which is why every light is hand-inspected before it leaves our facilities:

- **Only top-tier CREE® LED chips are selected.**
- **Premium materials like gold-plated circuits and aero-grade anodized aluminum are used.**
- **Flashlights feature a modular design for easy maintenance.**
- **Flawless bezel construction allows for smooth, one-hand focusing.**

For two decades, LED LENSER has led the way in focusing LED technology, with more than 200 design and technology patents. From our headquarters in Solingen, Germany, we'll continue to push the boundaries of what you can expect from your flashlight or headlamp so you can continue to see everything and do anything.

LED LENSER® 

SEE EVERYTHING. DO ANYTHING.



SEE EVERYTHING. DO ANYTHING..... 1

TECHNOLOGY 4

- ADVANCED FOCUS SYSTEM®..... 4
- RAPID FOCUS..... 5
- BLUE MOON FOCUS SYSTEM™ 5
- SAFETY YTRION CELL™ 6
- FLOATING CHARGE SYSTEM™ 7
- SMART LIGHT TECHNOLOGY™ 8
- OPTISENSE® 10
- X-LENS TECHNOLOGY™ 10

HEADLAMP MAP 13

FLASHLIGHT MAP 14

XEO™ SERIES 16

- NEW!** XEO™ 19R (WHITE)..... 18
- NEW!** XEO™ 19R (BLACK)..... 18
- NEW!** XEO™ 19R (GREEN) 18

H SERIES..... 20

- H14R.2..... 21
- H7R.2 21
- H14.2 22
- H7.2..... 22
- NEW!** H6R 22
- NEW!** H6 22
- H5..... 23
- NEW!** H3..... 23

SEO® SERIES..... 24

- SEO® 7R (BLUE)..... 24
- SEO® 5 (RED) 25
- SEO® 5 (GRAY) 25
- NEW!** SEO® 3 (GREEN) 25
- NEW!** SEO® 3 (ORANGE) 25

NEO™ SERIES 26

- NEW!** NEO™ (BLUE)..... 27
- NEW!** NEO™ (GREEN)..... 27
- NEW!** NEO™ (ORANGE)..... 27
- NEW!** NEO™ (PINK)..... 27
- NEW!** NEO™ (YELLOW) 27

X SERIES..... 28

- X21R.2 29
- X21.2..... 29

M SERIES 30

- M17R..... 31
- M14X..... 31
- M14..... 31
- M7RX..... 32
- M7R..... 32
- M7..... 32
- M5..... 32
- M3R..... 33
- M1..... 33

P SERIES..... 34

- P7QC 34
- P7.2 34
- P17R 35
- P17.2..... 35
- P14.2..... 36
- P6.2 36
- P5R.2 36
- P5.2 36
- P4 BM..... 37
- P3 AFS P 37
- NEW!** P3 AFS 37
- P2 BM..... 37

F SERIES 38

- NEW!** F1R..... 39
- NEW!** F1W..... 39
- F1 39

T SERIES 40

- T7M 40
- T7.2 40
- NEW!** TT..... 41
- NEW!** T² 41
- NEW!** T²QC 41

K SERIES..... 42

- K3 43
- K2L..... 43
- K1L..... 43

OTHER..... 44

- NEW!** D14.2..... 45
- L7..... 45
- AUTOMOTIVE 45

PRODUCT COMPARISON 46

ACCESSORIES..... 48

ANSI STANDARDS 52

WARRANTY..... 52

Traditionally light-focusing systems have consisted of either a lens, or a reflector. Lenses have the advantage of emitting a homogenous light pattern for up-close reading, yet over long distances almost 70% of the light is scattered and lost.

Conversely, while reflectors do a better job of capturing a higher percentage of light for long-distances, when they are used for up-close reading scattered light causes "rings" and "holes" in the light pattern leading to eye fatigue.

In both these cases, the lumen count (brightness) loses its usefulness as light is misdirected and wasted.

That's why we decided to try something different.

If you pull together the strengths of the lens and the reflector into one combined system, you achieve clear, homogeneous light spill for up-close reading and a sharply-focused beam for long-distance viewing.

This is exactly what we've done with the patented Advanced Focus System (AFS); the only light-focusing system of its kind. AFS means reading the map up-close is easy on the eyes and then focusing to find the path or landmark in the distance, clear and bright.

Light emitted sideways is focused by a reflector, but much of the light is scattered.



A lens focuses light to the front, but light emitted sideways is lost.



The Reflector-Lens focuses the whole amount of light to the front.



Reflector



Lens



Reflector-Lens



CONTROL AT YOUR FINGERTIPS

Fiddling with the the light bezel to focus and de-focus is a hassle. If you loosen it too much the light goes off, not enough and you're starting over. Worst of all the speed of acting or reacting is doubled when you have to use two hands.

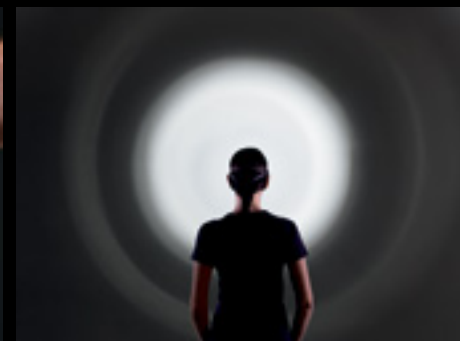
With our Rapid Focus system, you can go from reading to searching by using the thumb on your holding hand to simply slide the bezel away from you. One hand, one movement, seamless transition from close to far and all points in between.



FLOOD



SPOT



BLUE MOON FOCUS SYSTEM™

CLEAN, CLEAR LIGHT

Thanks to their special prismatic structure, our lenses separate parts of the blue spectrum from the white spectrum. The blue components are thus projected to the edge of the light cone and the result is an excellent, clean white light to read by with a mellow blue circle to frame the reading area. Blue Moon Focus System optics make reading and general viewing easy on the eyes for less eye fatigue.





Safety Ytrion Cell

THE FUTURE IS NOW

The wait is over for a rechargeable battery that takes safety, power and run time to a whole new level. Introducing the Safety Ytrion Cell battery from LED LENSER; the first flashlight battery to truly mimic the properties of the hybrid car battery—non-explosive, long run times and the ability to recharge thousands of times without losing significant battery capacity. And while some of this may sound familiar, the actual findings are anything but typical:

THE SAFETY YTRION CELL™ BATTERY CAN...

- **Be charged 5,000+ times** - Typical Ni-MH or Li-Ion batteries can only be charged 500-1,000 times.
- **Maintains 90% original capacity after 2000 charges** - Standard rechargeables begin to lose more capacity far sooner.
- **Charge two to three-times faster** - Traditional Ni-MH or Li-Ion batteries don't charge as quickly.
- **Provide huge size-to-energy-capacity ratio** - Compared to Li-Ion, Safety Ytrion Cell batteries have much higher energy capacity meaning they can pack more power and run time into a much smaller and lighter package.

SIMPLE, FAST, SUSTAINABLE

Most recharging systems require fiddling with docking stations for your batteries, seemingly endless cords, and countless times disassembling and assembling the light itself to insert the charged batteries. With the magnet technology in the Floating Charge System, touch the tail switch with magnet to the floating charge magnet and walk away. A green charging light indicator will tell you when you're ready to go again. A red light will blink and shut the system down, should you misalign the charging system.

If you're traveling, simply pop off the top of the charging system and plug it into a USB adapter to charge from your laptop, car, or hotel room USB port. Simple, fast, and sustainable from LED LENSER, the leaders in rechargeable technology.





Sometimes you want constant power to your light. Other times you know you'll be out for awhile and you want to conserve energy. Either way Smart Light Technology settings allow you to choose how much power you want to use to operate your light.

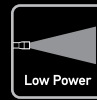
Now add to that individualized programs you set quickly and easily with a simple click on the tail switch. There's one for professionals, an easy everyday mode, and one for defense. Each program has unique functions from simple on/off to "S.O.S." and even a potentially lifesaving "defense strobe." Simple, fast and custom for you. Smart Light Technology is one more way LED LENSER puts the "brains" in "bright."

LIGHT FUNCTIONS



MORSE CODE

This function enables you to send individual signal sequences.



LOW POWER

Light output is dimmed down to approx. 15%, which also makes for a considerably extended burning life.



S.O.S.

In case of an emergency, the lamp's S.O.S. function can call help to your side. The signal is visible for several yards.



BOOST

If the switch is momentarily pressed, the lamp shines brighter, for a short time, than it does when in continuous operation.



DIM

Stageless adjustment between 15% and 100% enables you to choose the desired light intensity.



DEFENSE STROBE

Personal safety was the basic idea behind this function. High-frequency light flashes (strokes) are a quick and effective method of self-defense. In the field of non-lethal weapons, even the U.S. military counts on this technology.



POWER

High light output for any situation.



BLINK

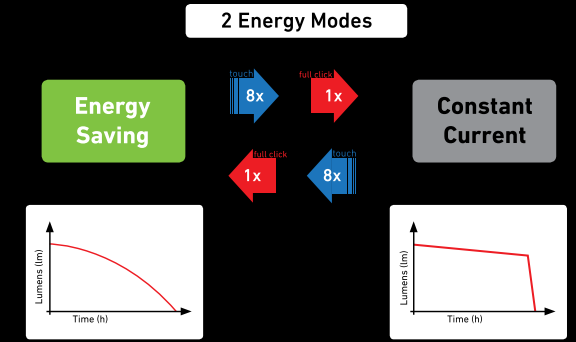
Light pulses are emitted automatically in regular intervals. This function enables you to signal your position.

ENERGY MODES FOR ADVANCED SLT

Advanced Smart Light Technology (SLT) has two distinct Energy modes. You can choose between the Energy Saving mode, which optimizes burning life, and the Constant Current mode with electronically-controlled, continuous light output.

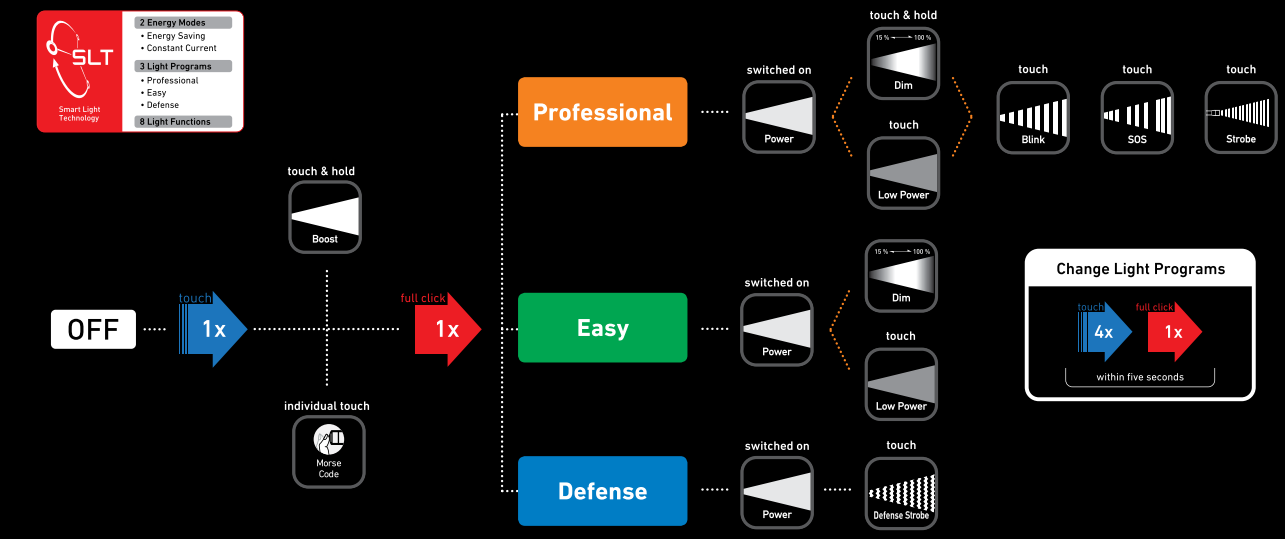
The Low Battery Indicator, another feature of SLT, constantly checks the battery charge condition and informs you when it's time to replace the batteries.

All lights are shipped from the factory in the Energy Saving Mode.



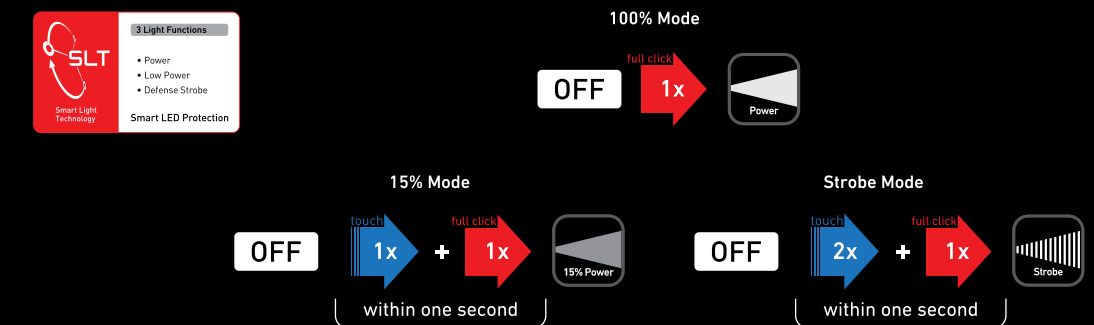
ADVANCED SLT

In addition to 8 unique light programs and functions to tailor your light to your needs, Advanced Smart Light Technology also offers two energy modes: Energy Saving mode and Constant Current. Smart Light Technology puts you in control and allows you to choose how much power you want to use to operate your light.



BASIC SLT

Smart Light Technology allows you to program your light functions to the task at hand. Three light functions (Power, Low Power, and Defense Strobe) are easily operated with full or half clicks, ensuring your focus will be on the job, not on your light.



OPTISENSE[®]

OPTISENSE
TECHNOLOGY

Thanks to an integrated brightness sensor, light around you can be measured in real time with OPTISENSE Technology. The intensity of your headlamp automatically adjusts based on the brightness in the environment around you, tailoring your light to your activity without fiddling with buttons or switches.



X-LENS TECHNOLOGY[™]

X LENS TECHNOLOGY

An industry first, X-Lens Technology combines multiple LED into one seamlessly-projected beam of light. Add to that an optimized heat sink system that enables us to drive our LEDs harder and you to get unprecedented output from common batteries in handheld sizes. Each LED is projected through our patented Advanced Focus System.

When you put the power of multiple LEDs through this unique concentration process, the output is even greater. Beyond that, you have the ability to take the light from a long-distance spot with power and reach, to an extremely clean, easy-to-read-by, close-up beam and all points in between.





HEADLAMP MAP



NEW! XEO™ 19R (WHITE)
PAGE 18



NEW! XEO™ 19R (BLACK)
PAGE 18



NEW! XEO™ 19R (GREEN)
PAGE 18



H14R.2
PAGE 21



H14.2
PAGE 22



H7R.2
PAGE 21



H7.2
PAGE 22



NEW! H6R
PAGE 22



NEW! H6
PAGE 22



H5
PAGE 23



NEW! H3
PAGE 23



SEO® 7R (BLUE)
PAGE 25



SEO® 5 (RED)
PAGE 25



SEO® 5 (GRAY)
PAGE 25



NEW! SEO® 3 (GREEN)
PAGE 25



NEW! SEO® 3 (ORANGE)
PAGE 25



NEW! NEO™ (BLUE)
PAGE 27



NEW! NEO™ (GREEN)
PAGE 27



NEW! NEO™ (ORANGE)
PAGE 27



NEW! NEO™ (PINK)
PAGE 27

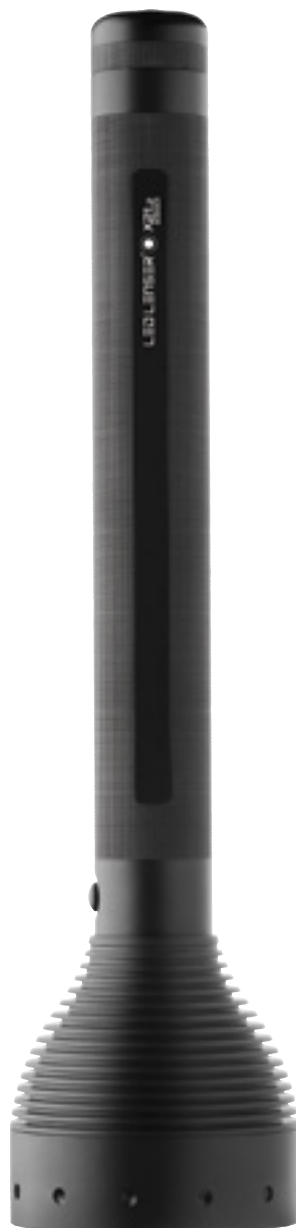


NEW! NEO™ (YELLOW)
PAGE 27

FLASHLIGHT MAP



X21R.2
PAGE 29



X21.2
PAGE 29



M17R
PAGE 31



M14X
PAGE 31



M14
PAGE 31



M7RX
PAGE 32



M7R
PAGE 32



M7
PAGE 32



M5
PAGE 32



M3R
PAGE 33



M1
PAGE 33

NEW!



FIR
PAGE 39

NEW!



FIW
PAGE 39



F1
PAGE 39



K3
PAGE 43



K2L
PAGE 43



K1L
PAGE 43

NEW!



T2QC
PAGE 41

NEW!



T2
PAGE 41

NEW!



TT
PAGE 41



T7.2
PAGE 40



T7M
PAGE 40



AUTOMOTIVE
PAGE 45



L7
PAGE 45

NEW!



D14.2
PAGE 45



P2 6m
PAGE 37

NEW!



P3 AFS
PAGE 37



P3 AFS P
PAGE 37



P4 6m
PAGE 37



P5.2
PAGE 36



P5R.2
PAGE 36



P6.2
PAGE 36



P7QC
PAGE 34



P7.2
PAGE 34



P14.2
PAGE 36



P17.2
PAGE 35



P17R
PAGE 35



What can you do with a XEO? Anything. Everything. And you can do it 24/7, because darkness won't slow you down. Any low-visibility job, nighttime operation, or after-dark activity is safer and easier when lit by 2000 powerful lumens. With a LED LENSER XEO, night becomes your new frontier. After all, why should you stop just because the sun called it quits?

XEO utilizes groundbreaking technology to achieve impressive performance for any activity. Our independent focusing lenses, easily operated by our dynamic control pad, allow you to stay in control after dark and put clean, clear, and powerful light where you need it most.

In addition to lighting your way, power your lifestyle and the rest of your electronic devices with our rechargeable power bank battery. XEO lets you keep on doing what you love – no matter what time of day or night.



AIR INTAKE

Air enters the headlamp as you move, cooling the LEDs and allowing XEO to maintain peak performance and brightness.



DYNAMIC CONTROL PAD

Light modes and lens outputs are quickly and easily controlled and programmed for your situation using our intuitive control pad.



INDEPENDENT FOCUSING LENSES

Focus each lens independently to highlight a distant object and illuminate your area at the same time – or, use both to create an even brighterw spot or flood beam.



CHARGER AND POWER BANK

The XEO rechargeable battery pack does more than just power your light- use the USB port to charge your smartphone, GoPro®, or other electronic devices.





XEO™ 19R (WHITE) NEW!

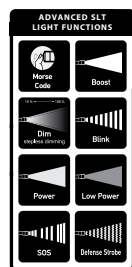
KEY FEATURES:

Tilttable Head
Independent Focusing Lenses
Variety of Attachment Capabilities
Battery: Li-ion Battery Pack
Recharge Time: 8h

Weight 16.85 oz | 478 g

OPTISENSE
TECHNOLOGY

X LENS
TECHNOLOGY



FL1 STANDARD	MAX	MIN
	2000 LUMENS	50 LUMENS
	200m	100m
	2h	40h
	IPX6	IPX6



XEO™ 19R (BLACK) NEW!

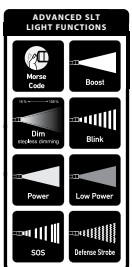
KEY FEATURES:

Tilttable Head
Independent Focusing Lenses
Variety of Attachment Capabilities
Battery: Li-ion Battery Pack
Recharge Time: 8h

Weight 16.85 oz | 478 g

OPTISENSE
TECHNOLOGY

X LENS
TECHNOLOGY



FL1 STANDARD	MAX	MIN
	2000 LUMENS	50 LUMENS
	200m	100m
	2h	40h
	IPX6	IPX6



XEO™ 19R (GREEN) NEW!

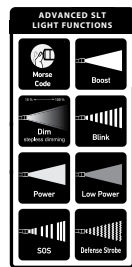
KEY FEATURES:

Tilttable Head
Independent Focusing Lenses
Variety of Attachment Capabilities
Battery: Li-ion Battery Pack
Recharge Time: 8h

Weight 16.85 oz | 478 g

OPTISENSE
TECHNOLOGY

X LENS
TECHNOLOGY



FL1 STANDARD	MAX	MIN
	2000 LUMENS	50 LUMENS
	200m	100m
	2h	40h
	IPX6	IPX6



When you're at the campsite or on the job, keeping things safe and bright are top priority. LED LENSER's H Series headlamps do just that with technology that puts you in charge of your environment and in control of your light, all while staying hands-free. Our custom ergonomic fit makes for comfortable wear, making lighting the task at hand easier than ever and reliable for the long haul.



LED LENSER's headlamps aren't just powerful – they power your lifestyle. Technology advances like a unique focusing beam and tiltable head put light exactly where you want it, while our ergonomic design and interactive scroll wheel keep you comfortable and safe while you adjust your light output.

Rechargeable options, carabiner hooks for easy carry on the go and comfort-focused, lightweight designs make our H Series an easy-to-operate choice for any situation.



FOCUSABLE

An upgraded lens for our Advanced Focus System adjusts easily to a tight spot light for long-distance viewing or flood beam for close range illumination.



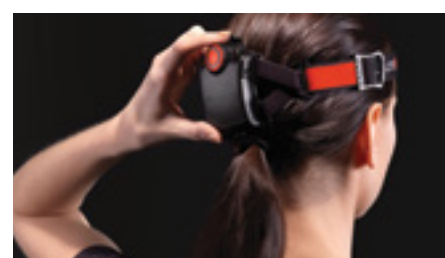
90° TILTABLE HEAD

Our durable flex mechanism allows you to tilt your headlamp up to 90° and keep it securely in place to shine your light exactly where you need it.



ERGONOMIC DESIGN

A redesigned light unit, head strap and battery box conform to the natural curve of your head, ensuring maximum comfort during extended use.



INTERACTIVE SCROLL WHEEL

Our scroll wheel allows you to quickly and easily control the brightness of your headlamp, and features a blinking red safety light for cyclists and runners.



H14R.2

KEY FEATURES:

Interactive Scroll Wheel Control
Brightness/Dimming Switch
Battery Indicator
Variety of Attachment Capabilities
Battery: Li-ion Battery Pack
Recharge Time: 8h

Weight 11.99 oz | 340 g



ADVANCED SLT LIGHT FUNCTIONS	
Dim (Low Battery)	Boost
Power	Blink
Deflate Strobe	Low Power

FL STANDARD	MAX	MIN
	850 LUMENS	60 LUMENS
	300m	70m
	4h	40h
	IPX6	IPX6



H7R.2

KEY FEATURES:

Interactive Scroll Wheel Control
Brightness/Dimming Switch
Battery Indicator
Red Backlight
Battery: Li-ion Battery Pack
Recharge Time: 5h

Weight 5.82 oz | 165 g



ADVANCED SLT LIGHT FUNCTIONS	
Dim (Low Battery)	Boost
Power	Blink
Deflate Strobe	Low Power

FL STANDARD	MAX	MIN
	300 LUMENS	20 LUMENS
	160m	50m
	4h	30h
	IPX6	IPX6

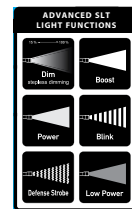


H14.2

KEY FEATURES:

Interactive Scroll Wheel Control
Brightness/Dimming Switch
90° Tilttable Head
Variety of Attachment Capabilities
Battery: 4 x AA

Weight 11.99 oz | 340 g



FL1 STANDARD	MAX	MIN
	320 LUMENS	60 LUMENS
	260m	100m
	6h	30h
	IPX6	IPX6



H7.2

KEY FEATURES:

Interactive Scroll Wheel Control
Dimming Switch
Tilttable Head
Carabiner Clip
Battery: 4 x AAA

Weight 5.82 oz | 165 g

FL1 STANDARD	MAX	MIN
	250 LUMENS	20 LUMENS
	160m	50m
	5h	30h
	IPX6	IPX6



H5

KEY FEATURES:

Comfortable and Lightweight
Tilttable Head
Red Backlight
Battery: 3 x AAA

Weight 4.09 oz | 116 g

FL1 STANDARD	MAX	MIN
	25 LUMENS	
	70m	
	20h	
	IPX4	

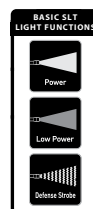


H6R NEW!

KEY FEATURES:

Comfortable and Lightweight
Dimming Switch
Tilttable Head
Battery: 3 x AAA Ni-MH
Recharge Time: 4.5h

Weight 4.23 oz | 120 g



FL1 STANDARD	MAX	MIN
	155 LUMENS	27 LUMENS
	140m	20m
	2h	50h
	IPX4	IPX4

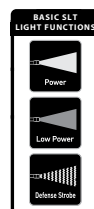


H6 NEW!

KEY FEATURES:

Comfortable and Lightweight
Dimming Switch
Tilttable Head
Battery: 3 x AAA

Weight 4.23 oz | 120 g



FL1 STANDARD	MAX	MIN
	155 LUMENS	27 LUMENS
	140m	20m
	4h 30m	63h
	IPX4	IPX4



FL1 STANDARD	MAX	MIN
	60 LUMENS	3 LUMENS
	35m	10m
	7h	60h
	IPX4	IPX4

H3 NEW!

KEY FEATURES:

Comfortable and Lightweight
Dimming Switch
Tilttable Head
Battery: 3 x AAA

Weight 4.02 oz | 114 g



SEO® SERIES

Power and versatility in one package. The SEO Series shines bright with features like top lumen performance, a red LED for preserving night vision, powerful Cree® white LEDs, flash function, and a swiveling head that ensures you'll have light where you want it, when you want it. The SEO Series is the perfect flexible, lightweight, and technology-centered headlamp for any sport, hobby, or job.

TILTABLE HEAD

Putting light where you need it most, SEO's tilttable head securely controls the beam angle to spot objects in the distance or illuminate the area around you.

RED LIGHT MODE

Not only does SEO feature power white light, a red light function also provides an added safety feature and allows the user to maintain night vision.



SEO® 7R (BLUE)

KEY FEATURES:

Comfortable and Lightweight
Tilttable Head
Carabiner Hook
Red Light Mode
Battery: Li-Ion Battery Pack
Recharge Time: 3h 45m

Weight 3.28 oz | 93 g

OPTISENSE TECHNOLOGY

BASIC SLT LIGHT FUNCTIONS	FL1 STANDARD	MAX	MIN
Power		220 LUMENS	20 LUMENS
Low Power		130m	40m
Defense Stroke		5h	20h
		IPX6	IPX6

FL1 STANDARD	MAX	MIN
	180 LUMENS	20 LUMENS
	120m	40m
	7h	25h
	IPX6	IPX6



SEO® 5 (RED)

KEY FEATURES:

Comfortable and Lightweight
Tilttable Head
Carabiner Hook
Red Light Mode
Battery: 3 x AAA

Weight 3.7 oz | 105 g

BASIC SLT LIGHT FUNCTIONS	FL1 STANDARD	MAX	MIN
Power		180 LUMENS	20 LUMENS
Low Power		120m	40m
Defense Stroke		7h	25h
		IPX6	IPX6

FL1 STANDARD	MAX	MIN
	180 LUMENS	20 LUMENS
	120m	40m
	7h	25h
	IPX6	IPX6



SEO® 5 (GRAY)

KEY FEATURES:

Comfortable and Lightweight
Tilttable Head
Carabiner Hook
Red Light Mode
Battery: 3 x AAA

Weight 3.7 oz | 105 g

BASIC SLT LIGHT FUNCTIONS	FL1 STANDARD	MAX	MIN
Power		180 LUMENS	20 LUMENS
Low Power		120m	40m
Defense Stroke		7h	25h
		IPX6	IPX6

FL1 STANDARD	MAX	MIN
	180 LUMENS	20 LUMENS
	120m	40m
	7h	25h
	IPX6	IPX6



SEO® 3 (GREEN) NEW!

KEY FEATURES:

Comfortable and Lightweight
Tilttable Head
Carabiner Hook
Red Light Mode
Battery: 3 x AAA

Weight 3.7 oz | 105 g

BASIC SLT LIGHT FUNCTIONS	FL1 STANDARD	MAX	MIN
Power		100 LUMENS	15 LUMENS
Low Power		100m	30m
Defense Stroke		10h	40h
		IPX6	IPX6

FL1 STANDARD	MAX	MIN
	100 LUMENS	15 LUMENS
	100m	30m
	10h	40h
	IPX6	IPX6



SEO® 3 (ORANGE) NEW!

KEY FEATURES:

Comfortable and Lightweight
Tilttable Head
Carabiner Hook
Red Light Mode
Battery: 3 x AAA

Weight 3.7 oz | 105 g

BASIC SLT LIGHT FUNCTIONS	FL1 STANDARD	MAX	MIN
Power		100 LUMENS	15 LUMENS
Low Power		100m	30m
Defense Stroke		10h	40h
		IPX6	IPX6

FL1 STANDARD	MAX	MIN
	100 LUMENS	15 LUMENS
	100m	30m
	10h	40h
	IPX6	IPX6





Fun, colorful, dynamic, and lightweight – the NEO headlamp series is ideal for the outdoor enthusiast in all of us. Features including 90 bright lumens of light, a 150° ultra wide beam, and a rear blinking light mean that you'll see and be seen while enjoying your favorite adventures, and at only 1.9 oz, you'll barely notice it's there. If you cycle, walk, jog, or hike before sunup or after sundown, the LED LENSER NEO will help you see in style.



NEO™ (BLUE) **NEW!**



KEY FEATURES:

Comfortable and Lightweight
150° Ultra-wide Beam
Blinking Rear Red Light
Compact Aerodynamic Form
Battery: 3 x AAA

Weight 3.1 oz | 88 g

FL1 STANDARD	MAX	MIN
	90 LUMENS	20 LUMENS
	10m	10m
	10h	40h
	IPX4	IPX4



NEO™ (GREEN) **NEW!**



KEY FEATURES:

Comfortable and Lightweight
150° Ultra-wide Beam
Blinking Rear Red Light
Compact Aerodynamic Form
Battery: 3 x AAA

Weight 3.1 oz | 88 g

FL1 STANDARD	MAX	MIN
	90 LUMENS	20 LUMENS
	10m	10m
	10h	40h
	IPX4	IPX4



NEO™ (ORANGE) **NEW!**



KEY FEATURES:

Comfortable and Lightweight
150° Ultra-wide Beam
Blinking Rear Red Light
Compact Aerodynamic Form
Battery: 3 x AAA

Weight 3.1 oz | 88 g

FL1 STANDARD	MAX	MIN
	90 LUMENS	20 LUMENS
	10m	10m
	10h	40h
	IPX4	IPX4



NEO™ (PINK) **NEW!**



KEY FEATURES:

Comfortable and Lightweight
150° Ultra-wide Beam
Blinking Rear Red Light
Compact Aerodynamic Form
Battery: 3 x AAA

Weight 3.1 oz | 88 g

FL1 STANDARD	MAX	MIN
	90 LUMENS	20 LUMENS
	10m	10m
	10h	40h
	IPX4	IPX4



NEO™ (YELLOW) **NEW!**

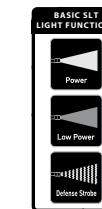


KEY FEATURES:

Comfortable and Lightweight
150° Ultra-wide Beam
Blinking Rear Red Light
Compact Aerodynamic Form
Battery: 3 x AAA

Weight 3.1 oz | 88 g

FL1 STANDARD	MAX	MIN
	90 LUMENS	20 LUMENS
	10m	10m
	10h	40h
	IPX4	IPX4



The entire NEO lineup features Smart Light Technology (Basic) with Power, Low Power, and Strobe light functions.

When you need your light to provide extreme performance and enough light for any task, the X Series delivers. LED LENSER's Advanced Focus System puts clean and concentrated light where you need it most, and our Smart Light Technology allows you to customize light output no matter what the challenge ahead of you. With our longest run times and brightest lights, the X Series will take your basecamp, backyard or worksite to the next level of brightness.



X21R.2

KEY FEATURES:

- Fast-Action Switch
- Floating Charge System
- Power and Charge Indicator
- Battery: 1 x Li-FePO4 Safety Ytrion Cell™
- Recharge Time: 3h 30m**

Length 15.99 in | 40.6 cm Weight 45.86 oz | 1300 g



ADVANCED SLT LIGHT FUNCTIONS

Menu Code	Boost
Dim (Low Battery)	Blink
Power	Low Power
SOS	Defense Stroke

X LENS TECHNOLOGY

Advanced Focus System

SLT Smart Light Technology

FL STANDARD	MAX	MIN
	3000 LUMENS	200 LUMENS
	700m	150m
	3h	40h
	IPX4	IPX4



X21.2

KEY FEATURES:

- Dynamic Switch
- 50 Hour Runtime
- Water-resistant Housing
- Battery: 4 x D-cell

Length 15.63 in | 39.7 cm Weight 49.38 oz | 1400 g

ADVANCED SLT LIGHT FUNCTIONS

Menu Code	Boost
Dim (Low Battery)	Blink
Power	Low Power
SOS	Defense Stroke

X LENS TECHNOLOGY

Advanced Focus System

SLT Smart Light Technology

FL STANDARD	MAX	MIN
	1500 LUMENS	250 LUMENS
	600m	250m
	10h	50h
	IPX4	IPX4



When there's a lot on the line, you need a light you can depend on. LED LENSER's rugged and reliable M Series features some of the brightest lights we offer for hardworking uniformed professionals. Because of our top technology we can drive our LEDs harder, getting you more run time and necessary amplified performance. The M Series gives you a compact power package where extreme brightness and durability come first, putting you in control of the operation.



M17R

KEY FEATURES:

- Fast-Action Switch
- Floating Charge System
- Power and Charge Indicator
- Type III Hard-anodized Finish
- Battery: 2 x Li-FePO4 Safety Ytrion Cell™
- Recharge Time: 2h 30m

Length 12 in | 30.48 cm Weight 27.45 oz | 779 g



ADVANCED SLT LIGHT FUNCTIONS

Mode Code	Boost
Dim (Low Battery)	Blink
Power	Low Power
SOS	Defense Stroke

Advanced Focus System

FL1 STANDARD	MAX	MIN
	850 LUMENS	120 LUMENS
	450m	250m
	5h	36h
	IPX4	IPX4

SLT Smart Light Technology



M14X

KEY FEATURES:

- Rapid Focus
- Lockable Focus
- Type III Hard-anodized Finish
- Battery: 4 x AA

Length 6.38 in | 16.2 cm Weight 12.87 oz | 365 g

ADVANCED SLT LIGHT FUNCTIONS

Mode Code	Boost
Dim (Low Battery)	Blink
Power	Low Power
SOS	Defense Stroke

Advanced Focus System

FL1 STANDARD	MAX	MIN
	650 LUMENS	60 LUMENS
	280m	60m
	1h 30m	15h
	IPX4	IPX4

SLT Smart Light Technology



M14

KEY FEATURES:

- Rapid Focus
- Lockable Focus
- Type III Hard-Anodized Finish
- Battery: 4 x AA

Length 6.34 in | 16.1 cm Weight 12.35 oz | 350 g

ADVANCED SLT LIGHT FUNCTIONS

Mode Code	Boost
Dim (Low Battery)	Blink
Power	Low Power
SOS	Defense Stroke

Advanced Focus System

FL1 STANDARD	MAX	MIN
	400 LUMENS	40 LUMENS
	320m	110m
	4h	20h
	IPX4	IPX4

SLT Smart Light Technology



M7RX

KEY FEATURES:

Rapid Focus
Lockable Focus
Type III Hard-anodized Finish
Battery: 1 x ICR18650
Recharge Time: 6h 30m

Length: 6.14 in | 15.6 cm Weight: 7.16 oz | 203 g

FL1 STANDARD	MAX	MIN
	600 LUMENS	85 LUMENS
	235m	70m
	1h 30m	8h 30m
	IPX4	IPX4



M7R

KEY FEATURES:

Rapid Focus
Lockable Focus
Type III Hard-anodized Finish
Battery: 1 x ICR18650
Recharge Time: 6h 30m

Length 6.02 in | 15.3 cm Weight 7.05 oz | 200 g

FL1 STANDARD	MAX	MIN
	400 LUMENS	40 LUMENS
	280m	100m
	4h	40h
	IPX4	IPX4



M3R

KEY FEATURES:

Compact and Lightweight
Rapid Focus
Type III Hard-anodized Finish
Also Compatible with Standard AAA Battery
Battery: 1 x ICR10440 Li-Ion
Recharge Time: 2h

Length 3.96 in | 10.1 cm Weight 1.65 oz | 48 g

FL1 STANDARD	MAX	MIN
	220 LUMENS	20 LUMENS
	130m	40m
	2h	6h
	IPX4	IPX4



M7

KEY FEATURES:

Rapid Focus
Lockable Focus
Type III Hard-anodized Finish
Battery: 4 x AAA

Length 5.2 in | 13.2 cm Weight 6.71 oz | 190 g

FL1 STANDARD	MAX	MIN
	400 LUMENS	40 LUMENS
	280m	100m
	1h	30h
	IPX4	IPX4



M5

KEY FEATURES:

Compact and Lightweight
Rapid Focus
Type III Hard-anodized Finish
Battery: 1 x AA

Length 4.37 in | 11.1 cm Weight 2.47 oz | 70 g

FL1 STANDARD	MAX	MIN
	140 LUMENS	40 LUMENS
	120m	70m
	5h	8h
	IPX4	IPX4



M1

KEY FEATURES:

Compact and Lightweight
Rapid Focus
Type III Hard-anodized Finish
Battery: 1 x CR123 (3v)

Length 3.82 in | 9.7 cm Weight 2.3 oz | 70 g

FL1 STANDARD	MAX	MIN
	300 LUMENS	60 LUMENS
	140m	70m
	3h	7h
	IPX4	IPX4





From an all-day hunt to an evening hike in the woods, or a do-it-yourself project that requires the circuit breaker to be off, LED LENSER's P Series is perfect for shedding light on the whole task at hand. Our patented reflector-lens gives you a more uniform lit area and optimized light distribution, so you can see more clearly. For all-around use and reliability available in a wide variety of sizes, the P Series won't let you down.



P7.2

KEY FEATURES:

Dynamic Switch
Rapid Focus
Matte "Frozen Black" Finish
Battery: 4 x AAA

Length 5.12 in | 13 cm Weight 6.17 oz | 175 g



FL1 STANDARD	MAX	MIN
	320 LUMENS	40 LUMENS
	260m	100m
	1h	25h
	IPX4	IPX4



P7QC

KEY FEATURES:

Dynamic Switch
Matte "Frozen Black" Finish
Red, Green, Blue, and White Light Modes
Battery: 4 x AAA

Length 5.23 in | 13.3 cm Weight 6.2 oz | 176 g



BASIC SLT LIGHT FUNCTIONS	FL1 STANDARD	MAX	MIN
		220 LUMENS	40 LUMENS
		60m	20m
		3h	20h
		IPX7	IPX7



P17R

KEY FEATURES:

Rapid Focus
Power and Charge Indicator
Floating Charge System
Battery: 2 x Li-FePO4 Safety Ytrion Cell™
Recharge Time: 3h

Length 12 in | 30.48 cm Weight 26.75 oz | 758 g



FL1 STANDARD	MAX	MIN
	400 LUMENS	50 LUMENS
	420m	150m
	10h	42h
	IPX4	IPX4



P17.2

KEY FEATURES:

Dynamic Switch
Rapid Focus
Matte "Frozen Black" Finish
Battery: 3 x D-cell

Length 12.05 in | 30.58 cm Weight 27.27 oz | 773 g



FL1 STANDARD	MAX	MIN
	450 LUMENS	50 LUMENS
	420m	140m
	30h	300h
	IPX4	IPX4



P14.2

KEY FEATURES:

Dynamic Switch
Rapid Focus
Matte "Frozen Black" Finish
Battery: 4 x AA



FL1 STANDARD	MAX	MIN
	320 LUMENS	50 LUMENS
	270m	100m
	2h	40h
	IPX4	IPX4

Length 7.76 in | 19.71 cm Weight 12.58 oz | 357 g



P6.2

KEY FEATURES:

Dynamic Switch
Rapid Focus
Matte "Frozen Black" Finish
Battery: 2 x AA



FL1 STANDARD	MAX	MIN
	200 LUMENS	
	120m	
	15h	
	IPX4	

Length 6.4 in | 16.3 cm Weight 4.09 oz | 116 g



P4 0m

KEY FEATURES:

Blue Moon Focus System™
Compact and Lightweight
Removable Pocket Clip
Battery: 2 x AAA

FL1 STANDARD	MAX	MIN
	18 LUMENS	
	25m	
	8h 30m	
	IPX4	

Length 5.51 in | 14 cm Weight 2.12 oz | 60 g



P3 AFS P

KEY FEATURES:

Compact and Lightweight
Removable Pocket Clip
Keyring Included
Battery: 1 x AAA



FL1 STANDARD	MAX	MIN
	75 LUMENS	
	120m	
	1h	
	IPX4	

Length 3.66 in | 9.3 cm Weight 1.48 oz | 42 g



PSR.2



KEY FEATURES:

Rapid Focus
Lockable Focus
Floating Charge System
Matte "Frozen Black" Finish
Battery: 1 x ICR 14500
Recharge Time: 2h 30m



BASIC SLT LIGHT FUNCTIONS	FL1 STANDARD	MAX	MIN
		270 LUMENS	20 LUMENS
		240m	50m
		4h	12h
		IPX4	IPX4

Length 4.6 in | 11.7 cm Weight 2.72 oz | 77 g



P5.2

KEY FEATURES:

Dynamic Switch
Rapid Focus
Matte "Frozen Black" Finish
Battery: 1 x AA



FL1 STANDARD	MAX	MIN
	140 LUMENS	
	120m	
	4h	
	IPX4	

Length 4.45 in | 11.3 cm Weight 2.86 oz | 81 g



P3 AFS

NEW!

KEY FEATURES:

Compact and Lightweight
Removable Pocket Clip
Keyring Included
Battery: 1 x AAA

FL1 STANDARD	MAX	MIN
	25 LUMENS	
	60m	
	6h	
	IPX4	

Length 3.54 in | 9.0 cm Weight 1.2 oz | 34 g



P2 0m

KEY FEATURES:

Blue Moon Focus System™
Compact and Lightweight
Removable Pocket Clip
Keyring Included
Battery: 1 x AAA

FL1 STANDARD	MAX	MIN
	16 LUMENS	
	25m	
	7h	
	IPX4	

Length 3.78 in | 9.6 cm Weight 1.34 oz | 38 g



With a top-of-class lumen-to-size ratio the F Series doesn't disappoint, no matter the job, mission, or activity. Design features like integrated roll protection and an interchangeable glass-breaking ring add to convenience, and IPX8 waterproof housing means that no matter what you get into, your light won't let you down. The F Series brings a new standard in compact flashlights.



FIR  **NEW!**

KEY FEATURES:

Replaceable Glass-breaking Ring
 Integrated Roll Protection
 Type III Hard-anodized Finish
 Battery: 1 x 18650 Li-ion
Recharge Time: 7h

Length 4.53 in | 11.5 cm Weight 4.23 oz | 120 g

BASIC SLT LIGHT FUNCTIONS	FL1 STANDARD	MAX	MIN
		1000 LUMENS	10 LUMENS
		160m	20m
		3h	60h
		IPX8	IPX8



FTW  **NEW!**

KEY FEATURES:

Replaceable Glass-breaking Ring
 Integrated Roll Protection
 Positionable Pocket Clip
 White Powdercoat Finish
 Battery: 1 x CR123 (3v)

Length 3.48 | 8.85 cm Weight 2.44 oz | 69 g

BASIC SLT LIGHT FUNCTIONS	FL1 STANDARD	MAX	MIN
		500 LUMENS	60 LUMENS
		100	60
		2h	3h 30m
		IPX8	IPX8



F1

KEY FEATURES:

Replaceable Glass-breaking Ring
 Integrated Roll Protection
 Positionable Pocket Clip
 Type III Hard-anodized Finish
 Battery: 1 x CR123 (3v)

Length 3.5 in | 8.89 cm Weight 2.43 oz | 68.8 g

BASIC SLT LIGHT FUNCTIONS	FL1 STANDARD	MAX	MIN
		400 LUMENS	60 LUMENS
		100m	60m
		2h	3h 30m
		IPX8	IPX8



T SERIES

In the T Series, LED LENSER's technology and design work together to create durable and reliable lights that allow you to go to work quickly, so you can focus on the job at hand – not your light. Extreme light output and impact-resistant aluminum housing mean that your light will be as tough as you are, and always ready to take on the next task.



T7M

KEY FEATURES:

Rapid Focus
Lockable Focus
Glass-breaking Tailcap
Type III Hard-anodized Coating
Battery: 4 x AAA

Length 5.2 in | 13.2 cm Weight 6.35 oz | 180 g

ADVANCED SLT LIGHT FUNCTIONS

- Maze Code
- Blast
- Dim
- Blink
- Power
- Low Power
- SOS
- Default Mode

Advanced Focus System

SLT
Smart Light Technology

FL1 STANDARD	MAX	MIN
	400 LUMENS	40 LUMENS
	280m	100m
	1h	35h
	IPX4	IPX4



T7.2

KEY FEATURES:

Dynamic Switch
Rapid Focus
Lockable Focus
Matte "Frozen Black" Finish
Battery: 4 x AAA

Length 5.12 in | 13 cm Weight 6.17 oz | 175 g

Advanced Focus System

FL1 STANDARD	MAX	MIN
	320 LUMENS	40 LUMENS
	260m	100m
	1h	25h
	IPX4	IPX4



TT NEW!

KEY FEATURES:

Dynamic Switch
Twist Focus
Removable Anti-Roll Ring
Matte "Frozen Black" Finish
Battery: 3 x AAA

Length 4.57 in | 11.6 cm Weight 4.67 oz | 132 g

Advanced Focus System

FL1 STANDARD	MAX	MIN
	280 LUMENS	25 LUMENS
	220m	80m
	3h	25h
	IPX6	IPX6



T² NEW!

KEY FEATURES:

Dynamic Switch
Matte "Frozen Black" Finish
Battery: 3 x AAA

Length 4.53 in | 11.5 cm Weight 3.56 oz | 98 g

FL1 STANDARD	MAX	MIN
	240 LUMENS	25 LUMENS
	180m	60m
	4h	25h
	IPX6	IPX6



T²QC NEW!

KEY FEATURES:

Fast-action Color Mode Switch
Red, Green, Blue, and White Light Modes
Battery: 3 x AAA

Length 3.8 in | 9.66 cm Weight 3.74 oz | 106 g

QUAD COLOR

FL1 STANDARD	MAX
	140 LUMENS
	25m
	4h
	IPX6

Convenient design and solid output make the K Series an ideal choice for keychain size flashlights. Easy to use bezel systems and a bright, clear light picture make any light in this series perfect for your pocket, purse, glove box, or backpack. Any time you need convenient, bright light – such as walking to and from the car, home or office at night – LED LENSER's K Series is at the ready.



K3

KEY FEATURES:

Blue Moon Focus System™
Keyring Included
Battery: 4 x AG13 (1.5v)

Length 2.68 in | 6.8 cm **Weight** 1.2 oz | 34 g

FL1 STANDARD	
	15 LUMENS
	35m
	1h 30m
	IPX4



K2L

KEY FEATURES:

Keyring Included
Battery: 4 x AG13 (1.5v)

Length 2.4 in | 6.09 cm **Weight** .74 oz | 20.9 g

FL1 STANDARD	
	22 LUMENS
	20m
	5h 30m
	IPX4



K1L

KEY FEATURES:

Keyring Included
Battery: 4 x AG3 (1.5v)

Length 1.89 in | 4.8 cm **Weight** .28 oz | 7.9 g

FL1 STANDARD	
	13 LUMENS
	15m
	45m
	IPX4





When you've got a task that needs doing, you need the right tools at the ready and the right light for the job. LED LENSER's unique selection of niche lights are perfect for that sticky situation, whether it be under the hood or under water. No matter what you're into, LED LENSER will always shine bright with outstanding performance and reliability for any tactical, automotive, outdoor, or professional need.



D14.2 NEW!

KEY FEATURES:

Sealed Magnetic Switch
Waterproof Up to 60 Meters
Battery: 4 x AA

Length 6.3 in | 16 cm **Weight** 7.76 oz | 220 g

FLY STANDARD	MAX	MIN
	400 LUMENS	60 LUMENS
	220m	80m
	2h	15h
	IPX8	IPX8



L7

KEY FEATURES:

Twist Focus
Shock-resistant Polycarbonate Body
Battery: 3 x AAA

Length 5.24 in | 13.3 cm **Weight** 5.01 oz | 142 g



FLY STANDARD	
	100 LUMENS
	225m
	6h
	IPX4



AUTOMOTIVE

KEY FEATURES:

Blue Moon Focus System™
Stainless Steel Housing
12V DC Charger
Battery: 4 x 20H
Recharge Time: 5h

Length 1.89 in | 4.8 cm **Weight** 1.69 oz | 48 g

FLY STANDARD	
	12 LUMENS
	13m
	30m
	IPX4

PRODUCT COMPARISON

	XEO™ SERIES			H SERIES						SEO™ SERIES					NEO™ SERIES					M SERIES							X SERIES		P SERIES								T SERIES					F SERIES			K SERIES			OTHER																			
	XEO™ 19R (WHITE)	XEO™ 19R (BLACK)	XEO™ 19R (GREEN)	H14R.2	H14.2	H7R.2	H7.2	H6R	H6	H5	H3	SEO™ 7R (BLUE)	SEO™ 5 (RED)	SEO™ 5 (GRAY)	SEO™ 3 (GREEN)	SEO™ 3 (ORANGE)	NEO™ (BLUE)	NEO™ (GREEN)	NEO™ (ORANGE)	NEO™ (PINK)	NEO™ (YELLOW)	M17R	M14X	M14	M7RX	M7R	M7	M5	M3R	M1	X21R.2	X21.2	P17R	P17.2	P14.2	P7.2	P70C	P6.2	P5R.2	P5.2	P40M	P3 RFS P	P3 RFS	P2 0M	T7M	T7.2	TT	T ^E	T ^{QC}	F1R	F1W	F1	K3	K2L	K1L	O14.2	L7	AUTOMOTIVE									
MAX LUMENS 200+	■	■	■	■	■	■	■					■										■	■	■	■	■	■						■	■	■	■	■	■	■	■						■	■	■				■	■					■	■					■	■		MAX LUMENS 200+
MAX RUN TIME 5+ HRS	■	■	■	■	■	■	■					■	■	■	■	■	■	■	■	■	■	■	■	■	■	■	■						■	■	■	■	■	■	■	■						■	■	■				■	■					■	■		MAX RUN TIME 5+ HRS						
ADVANCED FOCUS SYSTEM®	■	■	■	■	■	■	■					■	■	■	■	■						■	■	■	■	■	■						■	■	■	■	■	■	■	■															■	■		ADVANCED FOCUS SYSTEM®									
RAPID FOCUS	■	■	■	■	■							■	■	■	■	■						■	■	■	■	■	■																						■	■								■	■		RAPID FOCUS						
BLUE MOON™ FOCUS SYSTEM																																																	■	■								■	■		BLUE MOON™ FOCUS SYSTEM						
SMART LIGHT TECHNOLOGY™	■	■	■	■	■	■	■					■	■	■	■	■	■	■	■	■	■	■	■	■	■	■	■																			■	■	■										■	■		SMART LIGHT TECHNOLOGY™						
OPTISENSE®	■	■	■									■																																																	OPTISENSE®						
X-LENS TECHNOLOGY™	■	■	■																																																										X-LENS TECHNOLOGY™						
SAFETY YTRION CELL™																						■																																				SAFETY YTRION CELL™									
FLOATING CHARGE SYSTEM™																						■			■	■																																			FLOATING CHARGE SYSTEM™						
RECHARGABLE	■	■	■	■		■			■			■										■			■	■															■																		RECHARGABLE								
D-CELL BATTERIES																																																													D-CELL BATTERIES						
AA BATTERIES					■																		■	■																									■												AA BATTERIES						
AAA BATTERIES							■			■	■		■	■	■	■	■	■	■	■	■					■																								■											AAA BATTERIES						
CR123 (3v) BATTERIES																																															■	■													CR123 (3v) BATTERIES						
AG13 (1.5v) BATTERIES																																																	■	■	■													AG13 (1.5v) BATTERIES			
WATER RESISTANT (IPX4/IPX6)				■	■	■	■	■	■	■	■	■	■	■	■	■	■	■	■	■	■	■	■	■	■	■	■																						■	■	■													WATER RESISTANT (IPX4/IPX6)			
WATERPROOF (IPX8)																																																	■															WATERPROOF (IPX8)			

ACCESSORIES

LED LENSER's wide variety of lighting accessories complement our flashlights and headlamps to make them even easier and more convenient to use in any situation. Options for carry, mounting, recharging, and signaling enhance the use of your LED LENSER light, ensuring you'll stay safe and stay in control, no matter what activity or task ahead.

INTELLIGENT CLIP™

Thanks to the Intelligent Clip, you can quickly attach your flashlight to your belt or pocket. The clip can rotate 360° and allows you to always have hands-free lighting. The Intelligent Clip is available in 5 standard sizes.



AVAILABLE FOR:

M14	P14.2	T7M
M7R	P7.2	T7.2
M7	P6.2	TT
M5	P5R.2	L7
P17.2	P5.2	

MAGNETIC MOUNTING

The Magnetic Mounting System is a handy accessory for the Intelligent Clip. This small module quickly attaches to the clip, giving you even greater flexibility to position your light in multiple applications.



AVAILABLE FOR:

Intelligent Clip™

ROLL PROTECTION

Roll Protection is an indispensable accessory for professionals. Easy to attach, it prevents your light from rolling away on uneven surfaces. It also protects the bezel and end cap against scratches and abrasion.



AVAILABLE FOR:

X21R.2	T7M
X21.2	T7.2
M7R	L7
M7	
P7.2	

TRIPOD FASTENER

Do you have a tripod and want to attach your X21, X21R or P17 to it? This attachment fits lights with a shaft diameter of approx. 1.5" and is suitable for use with tripods with a standard tread size.



AVAILABLE FOR:

X21R.2
X21.2

SIGNAL CONE

Simply put our signal cap over your flashlight, and you have a highly visible emergency signal at your disposal. For police officers, air traffic controllers and security personnel.



SIGNAL CONE (WHITE)

Ideal for uniformed and security professionals, this signal cone increases your light's functionality by transforming it to a versatile area light or attention-demanding signal light.



AVAILABLE FOR:

M14	P7QC	L7
M7R	T7M	
M7	T7.2	
P14.2	TT	
P7.2	D14.2	

AVAILABLE FOR:

M7RX	T7M
M7R	L7
M7	
P7QC	
P7.2	

SHEATHS

All sheaths are made from Cordura® polyamide and come with a Velcro® enclosure. The belt loop can be adjusted to fit the width of your belt with the easy-to-use fastener.



AVAILABLE FOR:

M14	P7.2	T7.2
M7R	P6.2	TT
M7	P5R.2	L7
M5	P5.2	
P14.2	T7M	

INTELLIGENT FILTER SHEATH™

This versatile sheath holds your light and our entire filter set, allowing you to use your handheld flashlight and filters quickly from your belt.

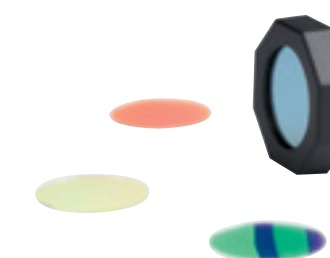


AVAILABLE FOR:

M7R	L7
M7	
P7.2	
T7M	
T7.2	

FILTER SET

A great combination lens protector and color filter. Simply place the filter on the front of the bezel to quickly get different light colors and secure your light from rolling away.



AVAILABLE FOR:

H14R.2	P14.2
H14.2	P7.2
M14	T7M
M7R	T7.2
M7	L7

REMOTE SWITCH™

The Remote Switch is ideal if you have to switch on your light without sound and from a short distance. Simply replace the end cap with the Remote Switch to operate.



CAR CHARGER

The car charger with USB port fits into any cigarette lighter and gives you charging capabilities on the go.



RECHARGEABLE BATTERIES

- Li-ion ICR18650 7.4v (H14R.2)
- Li-ion ICR10440 3.7v (M3R)
- Li-ion ICR14500 3.7v (P5R.2)
- Li-ion ICR18650 3.7v (M7R, M7RX, F1R)
- Li-ion 1x Ni-MH 4.8v (AUTOMOTIVE)
- Li-ion 3.7v 1400mAh (H7R.2)



FLOATING CHARGE SYSTEM™

See page 4 for full details.



120V POWER SUPPLY

Lost your wall charging portion of the Floating Charge System? This wall-power half of the system is great to keep on hand for an extra, or to move the system from place to place.



AVAILABLE FOR:

P7.2
T7.2

AVAILABLE FOR:

H7R.2
M7R
P5R.2

AVAILABLE FOR:

H14R.2
H7R.2
M7R
M7RX
M3R

P5R.2
F1R
AUTOMOTIVE

AVAILABLE FOR:

X21R.2
M17R
M7RX
M7R
P17R

P5R.2

AVAILABLE FOR:

X21R.2
M17R
M7RX
M7R
P17R

P5R.2

SEO® RECHARGEABLE BATTERY

The SEO 3 and 5 headlamps come standard with AAA batteries, but can be used with this individual Li-Ion rechargeable battery. This battery requires purchase of the SEO® Headlamp Charging System to activate.



HEADLAMP CHARGING SYSTEM

The SEO 7R comes with a rechargeable battery and cable, but if you choose to purchase the rechargeable battery for use in other SEO headlamps, you will need this cable and adaptor to charge it. Works with all four SEO headlamp models.



SEO® HEADLAMP BANDS

Replace your SEO headband, or swap it out for a new look with one of these colorful and comfortable headbands. Available in Red, Green, Blue, Gray, and Reflective to match the colors of the SEO® lights, or mix it up for your own style.



RUBBER HEADLAMP BAND

This replaceable headband is perfect for those who work with a hardhat or helmet. Rubber material keeps the headlamp from slipping up on the slick hat/helmet surface.



AVAILABLE FOR:

SEO® 7R (BLUE)
SEO® 5 (RED)
SEO® 5 (GRAY)
SEO® 3 (GREEN)
SEO® 3 (ORANGE)

AVAILABLE FOR:

H14R.2
H7R.2
SEO® 7R (BLUE)
SEO® 5 (RED)
SEO® 5 (GRAY)

SEO® 3 (GREEN)
SEO® 3 (ORANGE)

AVAILABLE FOR:

SEO® 7R (BLUE)
SEO® 5 (RED)
SEO® 5 (GRAY)
SEO® 3 (GREEN)
SEO® 3 (ORANGE)

AVAILABLE FOR:

H7R.2
H7.2
H6R
H6
H5

H3



How does LED LENSER USA measure and report its lighting specifications? LED LENSER USA uses ANSI/FL-1 standards as published by the National Electrical Manufacturers Association (NEMA).

This Standards Publication covers the basic performance of hand-held/portable flashlights, spotlights, and headlamps providing directional lighting. The Standards Publication was developed by the Flashlight Standards Committee (at the time of publication it was made up of 14 members all recognized as leaders in the lighting and battery industry). To date, this is the only industry-wide, agreed-upon standard of measurement.

LED LENSER USA tests its lights and headlamps according to ANSI testing requirements. Testing in compliance with these standards ensures the consumer consistent evaluation specifications when comparing LED LENSER lights with other ANSI/FL-1 standard-tested lights. For more information on testing procedures and requirements visit www.nema.org.



LIGHT OUTPUT/LUMENS

Light Output is the total luminous flux. It is the total quantity of emitted overall light energy as measured by integrating the entire angular output of the portable light source. Light output in this standard is expressed in units of lumens.



BEAM DISTANCE

Beam Distance is defined as the distance from the device at which the light beam is 0.25 lux (0.25 lux is approximately the equivalent of the light emitted from the full moon on a "clear night in an open field").



RUN TIME

Run Time is defined as the duration of time from the initial light output value-defined as 30 seconds after the point the device is first turned on using fresh batteries, until the light output reaches 10% of the initial value.



WATER RESISTANCE

Water Resistant/IPX4/IPX6 is defined as water can be splashed against the device from any direction shall have no harmful effects. Waterproof/IPX7 is defined as an ingress of water in quantities causing harmful effects shall not be possible when the enclosure is temporarily immersed in water under standardized conditions of pressure and time. Submersible/IPX8 is defined as an ingress of water in quantities causing harmful effects shall not be possible when the enclosure is continuously immersed in water under conditions more severe than for IPX7.

WARRANTY

We take extraordinary measures so your LED LENSER product will give you many years of dependable service. If it does not, we will gladly repair or replace it, at our discretion, with one of equal or greater value under our five-year warranty. For full warranty details and exclusions, or to obtain the required warranty repair form, please visit ledlenserusa.com and click on the "Warranty" link. For international warranty information visit ledlenserusa.com.

LED LENSER USA
ATTN: Warranty
5226 NE 152nd Place Portland, OR 97230
Phone Local: (503) 408-5301
Phone Toll Free: (800) 650-1245





LED LENSER USA
PO Box 20446
Portland, OR 97294
(800) 650-1245
ledlenserusa.com

