



TABLE OF CONTENTS

TECHNOLOGY	02
I SERIES	04
S SERIES	06
M-SERIES	14
R-SERIES	22
SR-SERIES	24
X-SERIES	28
H-SERIES	29
PISTOL LIGHT	32
ACCESSORIES	34
SPECIFICATIONS	35
BEAM COMPARISON	38



TECHNOLOGY

We engineer lights to give you the best performance, the smallest size possible, and the best value. We use our own products everyday to make sure we practice what we preach - keeping us honest. We want to give you quality design and functionality that really works when you need it to.

We are a technology-driven company, but our focus is always on the end user. We don't build technology for technology's sake. We harness technology to solve problems, to make our lights more user-friendly and intuitive, and to provide you with the best possible tools. We think long and hard about our products - how they will be used by those in harm's way, how they might be used to help save a life - and we utilize the latest technologies and manufacturing processes in innovative ways to build the best illumination products that we possibly can.

LED'S

Durability

Light emitting diodes (LEDs) are becoming increasingly ubiquitous across all aspects of illumination products. They are extremely durable and last for thousands of hours. Built with robust solid-state components, they don't have moving parts and are extremely resistant to vibration and shock - critical when it comes to quality flashlights. So unlike incandescent lamps that have all-too-fragile filaments, they won't break. LEDs stand up to rough conditions either from harsh weather, hard use or physical damage.

Ecologically Friendly

LEDs are the most efficient illumination and lighting source, emitting more light per watt with an estimated energy efficiency of 80% to 90% when compared to traditional lighting and conventional light bulbs. LED lighting is free of toxic chemicals. Most conventional fluorescent lighting bulbs contain a multitude of materials, such as mercury, that are dangerous for the environment. LED lights contain no toxic materials and are 100% recyclable. They will help you to reduce your carbon footprint by up to a third. The long operational life span mentioned above means that a single LED light bulb will save materials and production costs of 25 incandescent light bulbs! A big step towards a greener future!

Design Flexibility

LEDs can be combined in any shape to produce highly efficient illumination. Individual LEDs can be dimmed, resulting in dynamic control of light, color and distribution. LEDs are designed to focus their light output and can be directed to a specific location without the use of an external reflector, achieving higher application efficiency

than conventional lighting. Therefore, well-designed LED illumination systems are able to deliver light more efficiently.

Light Dispersion & Instant Lighting

LEDs are designed to focus their light output and can be directed to a specific location without the use of an external reflector, achieving higher application efficiency than conventional lighting. Therefore, well-designed LED illumination systems are able to deliver light more efficiently.

LED lights deliver their full output immediately and when powered on, which is vital for tactical use, strobe features, search and rescue, and other mission critical applications. Also, LED lights can be switched on and off frequently and without affecting the LED's light emission or lifespan. In contrast, traditional lighting may take several seconds to reach full brightness, and frequent on/off switching will drastically reduce operational life expectancy

REFLECTORS

LEDs inherently focus light output, but Olight flashlights use quality mirror-like reflectors to throw the light even further.

TEMPERED WINDOW LENSES

Olight's durable flashlight lenses have three different coatings applied to the lens surface: anti-scratch, beam-enhancing, and anti-fog. The coatings harden the surface to prevent scratches, reduce reflectiveness and increase beam output, and prevent moisture and fog from attaching to the surface of the lens.

BODY MATERIALS

Anodized Aluminum and PC/ABS Plastic. Olight's aluminum-body flashlights are made from durable aerospace aluminum alloy, making them very resistant to





damage from impact, crushing, or bending, and allowing them to be made as small and light as possible without sacrificing strength. The aluminum is type III hard anodized for corrosion resistance and surface hardness; it is non-conductive as well. This material and treatment is renowned for its durability and is widely used to manufacture hard-use tactical products.

Olight also uses Polycarbonate/Acrylonitrile Butadiene Styrene (PC/ABS) plastics, which are especially known for strength and excellent low temperature properties. PC/ABS blends withstand the stresses created by physical abuse and the effects of extremes in temperature.

SWITCHING & CONTROLS

There are two main functions in controlling a flashlight: turning it on or off, and selecting different modes. Olight has thoughtfully designed its line of flashlights with controls that are intuitive, ergonomic and specifically suited to the task at hand. For instance, a tactical flashlight intended to be used by law enforcement, military and armed citizens features different types of controls than a general purpose flashlight designed to be absolutely as small and compact as possible. We have carefully considered how flashlights are used in various types of applications and developed different types of controls for each.

Activating the light

Olight's flashlights feature switches located on the side or tail end of the body to turn the light on and off. Side switches are versatile, extremely compact and easy to actuate in regular usage and with larger and longer flashlights.

Tail-cap switches are commonly used for tactical applications because when held in an "ice pick" grip a tail switch can be easily located by feel (with or without gloves) and regardless of orientation of the light, and many techniques have been developed over the years to employ a light in this fashion.

Selecting modes

Olight builds state-of-the art flashlights with multiple brightness levels, strobe modes to disorient attackers, and lock-out modes to prevent accidental activation. All this functionality could be confusing, so we have designed our lights to be straightforward and intuitive. Our lights have three main methods of selecting modes, depending on the model: the side switch on the body, a side switch on the tail cap, and the selector head. Models with a single side switch on the body typically turn on and off with a single press

of the button, and cycle through different brightness levels by holding the button down continuously. They also usually have "quick access" features, such as double clicking the switch.

Tactical models feature separate controls to avoid any possibility of confusion and to ensure all functions can be accessed easily while under stress and with gloves - the tail switch only activates the light, and the selector head or a side switch on the tail cap changes modes. The tail switch also provides quick access to the brightest output and strobe mode with a quick double or triple press, respectively. And by either pressing the side switch on the tail cap or twisting the selector head, you can easily cycle through different brightness levels and modes.

MULTIPLE POWER SOURCES

Olight flashlights are powered by different types of power sources, including AAA alkaline, AA alkaline, CR123A Lithium-Ion, 18650 rechargeable batteries, and our proprietary rechargeable lithium battery packs. Each has its own strengths. We have flashlight models to fit every type of need and application, with battery options to match.

The CR123A lithium battery is the best performer in terms of capacity, doubling that of the AA alkaline battery, allowing flashlights to generally have longer runtimes. CR123A batteries produce 3 volts of power per battery for most of their useful life, as compared to 1.5 volts from alkaline batteries. Finally, lithium batteries tend to have a much longer shelf life and temperature tolerance than alkalines. Olight's own CR123A batteries are top quality, high performance, and a great value.

While they put out less voltage, you can't beat AA and AAA batteries for their compact size, economical price and ubiquity. They are everywhere, and make the cost of operating a flashlight very reasonable.

Rechargeable batteries take that even further, costing more initially but paying off in the long run by eliminating the need to continually purchase replacement batteries. Rechargeable batteries are particularly convenient for those who use their flashlights frequently, whether on duty or for work.



I SERIES

NEW

I SERIES: I3E EOS
MONO-OUTPUT LED KEYCHAIN LIGHT

100 LUMENS

I3E EOS is an extremely simple and mini-sized LED flashlight, which can be connected to your keys or backpack, or be put into your pocket. When you get stuck in the dark, it is able to produce 100 lumens of output.



I3E EOS SPECS

	MODE
	100 lumens
	37 min
	136ft / 41m
	420 CANDELA
	IPX8 WATERPROOF UP TO 2m
	4ft / 1.2m
	1 x LUXEON TX-L1T2
	1 x AAA
	L 2.37in / 60.2mm x D 0.55in / 14mm
	0.28oz / 7.9g (EXCLUDING BATTERY)

The specification is subject to change without prior notice.

I3E EOS FEATURES

- 1 Single brightness level with a maximum output up to 100 lumens
- 2 Featuring a TIR lens to optimize the beam to be well-distributed
- 3 Available in red, purple, blue, green, silver and black
- 4 Featuring so compact & mini size which comes from extreme design idea
- 5 Waterproof up to 2 meters

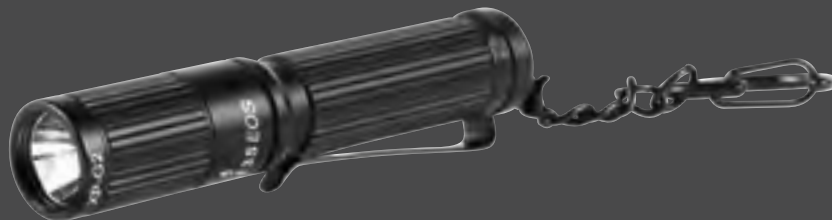
I SERIES

I SERIES: I3S EOS

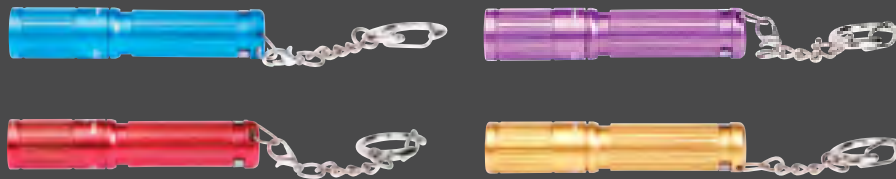
VARIABLE-OUTPUT LED KEYCHAIN LIGHT

80 LUMENS

With a surprisingly bright 80 lumens output and 5 different color options, the i3S is the light made for everyone. Clip it to your keys, belt loop, pocket, or throw one in your purse. For the size and intensity of this little light, there's no reason to get stuck in the dark.



▶ Available colors



I3S EOS FEATURES

- 1 Three brightness levels plus strobe
- 2 Twisting head back and forth cycles through output modes
- 3 Removable stainless pocket clip & keychain
- 4 Waterproof up to 2 meters
- 5 Available in red, purple, blue, gold, & black

I3S EOS SPECS

	MODE 1	MODE 2	MODE 3
	80 lumens	20 lumens	.5 lumens
	35 min	8 hours	60 hours
	125ft / 38m		
	360 CANDELA		
	IPX8 WATERPROOF UP TO 2 m		
	4ft / 1.2m		
	1 x CREE XP-G2		
	1 x AAA		
	L 2.76in / 70mm x D 0.55in / 14mm		
	0.39oz / 11g (EXCLUDING BATTERY)		

S SERIES

NEW

S SERIES: S30R BATON II

RECHARGEABLE VARIABLE-OUTPUT, COMPACT, SIDE SWITCH LED FLASHLIGHT

1,020 LUMENS

The Olight S30R Baton II is the new version of the original S30R Baton and features an upgraded LED, multiple power options and a powerful internal recharging system. Its compact and slim design makes it an excellent choice for everyday carry and its variable outputs with a max output of 1020 lumens, gives you the light options you need for any task at hand. An integrated magnet within the tailcap allows the S30R Baton II to be attached to any metal surface for a hands-free worklight that goes anywhere you need it. The S30R Baton II also comes with a desk-mountable USB charging dock so powering up your light is as easy as putting it down.



► Built-in thermal management safety program provides overheating protection



► Flat magnetic tailcap allows for attachment to any ferrous surface for a hands-free work light.



S30R BATON II FEATURES

- 1 Featuring a power indicator under a translucent silica gel button. The side switch will light up when the power runs low
- 2 Optional high-capacity batteries: 3200mAh / 3600mAh
- 3 Desktop micro-USB charging dock featuring a maximum output of 1000mAh
- 4 6061-T6 aluminum alloy body with anti-scratch MilSpec Type-III hard anodizing
- 5 Contains a constant current driver circuit

S SERIES



S30R BATON II SPECS

	MODE 1	MODE 2	MODE 3	MODE 4	MODE 5
	1020 ~ 600 lumens	450 lumens	100 lumens	20 lumens	1 lumen
	3 min + 110 min	2.8 hours	12 hours	62 hours	47 days
	3 min + 120 min	3 hours	14 hours	68 hours	50 days
	643ft / 196m				
	9,600 CANDELA				
	IPX8 WATERPROOF UP TO 2m				
	4.9ft / 1.5m				
	1 x CREE XM-L2 CW				
	1 x 18650 or 2 x CR123A				
	L 4.62in / 117.5mm x D 1.02in / 26mm				
	4.52oz / 128g (WITH CUSTOMIZED BATTERY)				



Dual-Power Source Capability

The S30R Baton II is capable of accepting both a customized rechargeable lithium-ion 18650 battery, as well as two non-rechargeable CR123As. Should you be away from a power source and can't recharge your battery, you can pop in a set of CR123A as a backup.

S SERIES

NEW

S SERIES: S1 BATON

VARIABLE-OUTPUT SIDE SWITCH LED FLASHLIGHT

500 LUMENS

The new S1 Baton is the latest evolution of our most popular Baton series. At less than 2.5 inches, and just over one ounce, the S1 Baton fits easily in your pocket, making it perfect for everyday carry. But don't be fooled, while the S1 Baton is small, its TIR-focused output is a mighty 500 lumens whose beam reaches 361 feet. And it has plenty of features to be the most useful light you can own, like its magnetic tailcap, variable light settings, and automatic timer shutoff. The S1 Baton is the next step in flashlight evolution and it is beautiful.



S1 BATON FEATURES

- 1 The S1 Baton features a PMMA TIR lens that focuses the light, optimizing the beam and producing a 110-meter throw
- 2 PVD coated stainless steel bezel and switch ring provides durability, shock, and corrosion resistance
- 3 With PVD coated surround ring that is designed to be more durable and low-profile side-switch prevent accidental activation when in a pocket or a bag
- 4 6061-T6 aluminum alloy body with anti-scratch MilSpec Type-III hard anodizing
- 5 Flat tailcap design contains a strong magnet providing the ability to place it upside down and use it as a hands-free work light
- 6 Removable pocket clip that is scratch resistant
- 7 The S1 Baton features a wide operating voltage circuit, and can be powered by both CR123A battery and RCR123A battery (built-in protected board)

S SERIES



THE S1 BATON USES A SINGLE LITHIUM BATTERY THAT PROVIDES EXTREME POWER AT AN ULTRA-COMPACT SIZE.

The S1 Baton can run off a single CR123A lithium-ion battery, providing up to 500 lumens of output with a maximum of 360 hours of runtime, on the low setting. It can also be powered by one rechargeable RCR123A lithium-ion battery.

LIGHT TIMER

The S1 Baton has a built-in timer function that allows you to set a 3 or 9 minutes timeframe before the light shuts itself off automatically. Once the light is on, double click the switch to enter into the timer mode.



AN ULTRA-COMPACT FLASHLIGHT WITH A PMMA TIR LENS, THAT GIVES YOU 500 LUMENS OF FOCUSED LIGHT.

S1 BATON SPECS

	MODE 1	MODE 2	MODE 3	MODE 4
	500 ~ 300 lumens	80 lumens	8 lumens	.5 lumens
	1.5 min 90 min	6 hours	40 hours	25 days
	361ft / 110m			
	3,000 CANDELA			
	IPX8 WATERPROOF UP TO 2m			
	4.9ft / 1.5m			
	1 x CREE XM-L2 CW			
	1 x CR123A or 1 x RCR123A			
	L 2.4in / 61mm x D 0.83in / 21mm			
	1.06oz / 30g (EXCLUDING BATTERY)			

S SERIES

S SERIES: INTEGRATED RECHARGEABLES

RECHARGEABLE VARIABLE-OUTPUT, COMPACT, SIDE SWITCH LED FLASHLIGHTS

The S Rechargeable models are extremely small, powerful, and now rechargeable. With up to 550 lumens output and an intelligent multi-function side switch that provides four different power settings and a strobe mode, they are the perfect all-purpose lights. All models come with a rechargeable lithium-ion battery and compact Micro-USB charging dock, so you don't have to worry about bulky chargers or special cables. Each light in the series feature a power indicator located in the side switch, which will glow red when your battery power is low. With its dual purpose magnetic tailcap, you can use these lights as a hands-free convenient worklight, and attach it securely to the included charging base to recharge. The charging base also features a USB port (output 5V, 2A) so you can charge your phone at the same time.



SHOWN: S10R BATON II

S RECHARGEABLE SERIES FEATURES

- 1 Glow-in-the-dark o-ring in bezel to help locate flashlight if accidentally dropped
- 2 Low-profile side switch featuring a battery power indicator, which glows red when battery runs low
- 3 Charge your mobile devices via the USB (extended) port at the same time as charging your light
- 4 Convenient pocket clip that easily attaches to hats and backpacks
- 5 Compact Micro-USB charging dock (Micro-Dok), you don't have to worry about bulky chargers or special cables
- 6 Flat magnetic tailcap allows for attachment to any ferrous surface
- 7 Aircraft-grade aluminum body with anti-scratch MilSpec Type-III hard anodizing

S SERIES



The Rechargeable Baton Series comes with a rechargeable battery in each light.

NEW



S10R BATON II SPECS

	MODE 1	MODE 2	MODE 3	MODE 4
	500-300 lumens	100 lumens	5 lumens	.5 lumens
	4 min + 45 min	3.33 hours	48 hours	7 days
	345ft / 105m			
	2,800 CANDELA			
	IPX7 WATERPROOF UP TO 1m			
	4.9ft / 1.5m			
	1 x CREE XP-L HD			
	1 x CR123A or 1 x RCR123A			
	L 2.89in / 73.5mm x D 0.91in / 23mm			
	1.52 oz / 43g (EXCLUDING BATTERY)			

S20R BATON SPECS

	MODE 1	MODE 2	MODE 3	MODE 4
	550 lumens	120 lumens	5 lumens	1 lumen
	2 hours	9 hours	120 hours	20 days
	387ft / 118m			
	3,400 CANDELA			
	IPX7 WATERPROOF UP TO 1m			
	4.9ft / 1.5m			
	1 x CREE XM-L2			
	1 x 18650			
	L 4.27in / 108.4mm x D 0.91in / 23mm			
	1.83 oz / 52g (EXCLUDING BATTERY)			

S SERIES

S BATON SERIES

VARIABLE-OUTPUT SIDE SWITCH LED FLASHLIGHTS

These non-rechargeable models are a versatile and compact line of flashlights that are ideal for every day use. Multiple output modes, impressive runtimes, and a quickly accessible strobe make these lights suitable for anytime, anywhere. The magnetic tailcap takes this series to a new level of practicality for hands-free light when you need it the most. Once you've stashed one in your car, backpack, or pocket, you'll never know how you lived without it.



► Flat tailcap with an embedded magnet give the S Series lights multiple mounting options for hands free work.

SHOWN: S10 BATON

S BATON SERIES FEATURES

- 1 Glow-in-the-dark o-ring in bezel to help locate flashlight if accidentally dropped
- 2 Side switch cycles through four brightness levels and activates strobe
- 3 Flat magnetic tailcap allows for attachment to any ferrous surface
- 4 Convenient pocket clip that easily attaches to hats and backpacks
- 5 Lock-out function to prevent accidental activation
- 6 From the off position, automatically return to your last brightness level with the built in memory function
- 7 Waterproof up to 2 meters
- 8 Aircraft-grade aluminum body with anti-scratch MilSpec Type-III hard anodizing
- 9 Stainless steel bezel provides protection from drops

S SERIES

S BATON SERIES: ST25 BATON

VARIABLE-OUTPUT DUAL-SWITCH LED FLASHLIGHT

The ST25 Baton is a compact, robust and affordable LED flashlight featuring two switches and powered by commonly available and economical AA batteries. The ST25 Baton is constructed of tough hard anodized aircraft-grade aluminum. With its simple intuitive controls and a highly efficient CREE XM-L2 LED that throws a long, powerful beam while maintaining long battery life, it makes a great choice for a duty belt, in a bug-out bag, or everyday carry.



ST25 BATON SPECS

	MODE 1	MODE 2	MODE 3	MODE 4	MODE 5
	550 lumens	300 lumens	100 lumens	10 lumens	1 lumen
	30 min	1 hour	6.5 hours	60 hours	200 hours
	427ft / 130m				
	4,400 CANDELA				
	IPX7 WATERPROOF UP TO 1 m				
	4.9ft / 1.5m				
	1 x CREE XM-L2				
	2 x AA ALKALINE or NiMH				
	L 6 in / 152.5mm x D 0.91 in / 23mm				
	2.75oz / 78g (EXCLUDING BATTERIES)				



S10 BATON SPECS

	MODE 1	MODE 2	MODE 3	MODE 4
	400 lumens	85 lumens	5 lumens	.5 lumens
	1.25 hours	7.5 hours	108 hours	360 hours
	341ft / 104m			
	2,700 CANDELA			
	IPX8 WATERPROOF UP TO 2m			
	6.6ft / 2m			
	1 x CREE XM-L2			
	1 x CR123A or RCR123A			
	L 2.75 in / 70.5mm x D 0.91in / 23mm			
	1.48oz / 42g (EXCLUDING BATTERY)			

S15 BATON SPECS

	MODE 1	MODE 2	MODE 3	MODE 4
	280 lumens	70 lumens	7 lumens	.5 lumens
	45 min	4 hours	32 hours	360 hours
	276ft / 84m			
	1,750 CANDELA			
	IPX8 WATERPROOF UP TO 2m			
	6.6ft / 2m			
	1 x CREE XM-L2			
	1 x AA or 14500			
	L 3.4 in / 86mm x D 0.91in / 23mm			
	1.62oz / 46g (EXCLUDING BATTERY)			

S20 BATON SPECS

	MODE 1	MODE 2	MODE 3	MODE 4
	550 lumens	120 lumens	5 lumens	.5 lumen
	2 hours	9 hours	120 hours	600 hours
	387ft / 118m			
	3,500 CANDELA			
	IPX8 WATERPROOF UP TO 2m			
	6.6ft / 2m			
	1 x CREE XM-L2			
	2 x CR123A or 1 x 18650			
	L 4.2 in / 106mm x D 0.91in / 23mm			
	1.83oz / 52g (EXCLUDING BATTERIES)			

M SERIES

M SERIES: M10 MAVERICK

VARIABLE-OUTPUT LED FLASHLIGHT

The M Series was developed with our tactical users in mind. The intuitive tailcap switch lets you choose between momentary or constant on. The side switch not only cycles through output modes, but also glows red when it's time to change the batteries. A contoured bezel provides an additional defensive tool, and with multiple ways to initiate strobe, you have options when it comes to these lights.

M10 MAVERICK SPECS

	MODE 1	MODE 2	MODE 3
	350 lumens	80 lumens	5 lumens
	1.25 hours	7.5 hours	108 hours
	351ft / 107m		
	2,880 CANDELA		
	IPX8 WATERPROOF UP TO 2m		
	6.6ft / 2m		
	1 x CREE XM-L2		
	1 x CR123A or RCR123		
	3.7in / 93mm x 0.9in / 23mm		
	1.92 oz / 54.5 g (EXCLUDING BATTERIES)		



M10 MAVERICK FEATURES

- 1 Contoured stainless steel bezel provides protection from drops
- 2 Side switch cycles through three brightness levels, and activates strobe
- 3 Tailcap switch clicks for constant on or provides momentary activation, brightest output, and strobe through half presses
- 4 Features a two-position pocket clip for either bezel up or bezel down carry.
- 5 Easily accessible lock-out feature with a half turn the tailcap
- 6 From the off position, automatically return to your last brightness level with the built in memory function
- 7 Waterproof up to 2 meters
- 8 Aircraft-grade aluminum body with anti-scratch MilSpec Type-III hard anodizing

NEW **M1X STRIKER**
VARIABLE-OUTPUT DUAL-SWITCH LED FLASHLIGHT

1,000 LUMENS

The M1X Striker is a defensive adaptation of the M18 Maverick. With an aggressive bezel and simple user interface, this tool is the ultimate self-defense flashlight. You have five different brightness levels to choose from 0.5 to 1000 lumens, plus a strobe mode. The M1X Striker also has a built in thermal management system that limits the high output to 5 minutes and then gradually decreases the high output to 55% after 3 minutes of constant use. From the off position, automatically return to your last brightness level with the built in memory function, so access to the highest output can be available at any time. An 800-lumen strobe paired with the 1/4" stainless steel strike bezel offer last-resort defensive options for your protection. If you need a lower-lumen output for a non-defensive scenario, you can select the other outputs available. Powered by two CR123As, or a single 18650, the M1X Striker is perfect for concealed or every day carry to help keep you safe in any situation.

M1X STRIKER SPECS

	MODE 1	MODE 2	MODE 3	MODE 4	MODE 5
	1000 ~550 lumens	350 lumens	60 lumens	10 lumens	0.5 lumens
	5 min + 55 min	2 hours	12 hours	60 hours	360 hours
	623ft / 190m				
	9,000 CANDELA				
	IPX8 WATERPROOF UP TO 2 m				
	4.9 ft / 1.5 m				
	1 x CREE XM-L2				
	2 x CR123A or 1 x 18650				
	L 5.35 in / 136mm x D 1.02 in / 26mm				
	2.8 oz / 80g (EXCLUDING BATTERIES)				

M1X STRIKER FEATURES

- Five brightness levels from 0.5 to 1000 lumens, plus a strobe mode
- The light features a maximum beam distance up to 190m and a maximum Runtime of 360 hours
- Shockproof body with enhanced conductivity tailcap structure and defensive strike bezel
- There is a 99% light transmittance rate through the tempered glass lens that has a two-sided anti-reflective coating
- Reverse polarity protection to prevent improper battery installation
- Waterproof up to 2 meters
- Aircraft-grade aluminum body with anti-scratch MilSpec Type III hard anodizing

M SERIES

M SERIES: M20SX JAVELOT

VARIABLE-OUTPUT DUAL-SWITCH LED FLASHLIGHT

A light from the Warrior line is the only light you'll need for most tactical applications. Powerful outputs, long beams, and dedicated accessories make them coveted tools for government agencies, law enforcement, military, or hunting. The design is catered to low-light techniques such as the Harries, FBI, neck index, and cigar methods with a sturdy syringe grip while the aircraft-grade aluminum body delivers exceptional durability. With options like the instant strobe tailcap button on the M20SX Javelot or the built-in twist mode selector of the M22 Warrior, you can choose what you need to get the job done whether that's heading out on patrol, writing a ticket, searching a structure, or making an entry.

M20SX JAVELOT

VARIABLE-OUTPUT DUAL-SWITCH LED FLASHLIGHT

REACHES 1,214 FT



M20SX JAVELOT FEATURES

- 1 Three brightness levels and strobe
- 2 Tailcap switch clicks for constant on or provides momentary activation, brightest output, and strobe through half presses
- 3 Syringe grip for practical use with firearms
- 4 Easily accessible lock-out feature with a half turn the tailcap
- 5 side switch located on the tail cap with quick strobe access
- 6 Aircraft-grade aluminum body with anti-scratch MilSpec Type-III hard anodizing
- 7 Contoured bezel ring offers additional self-defense option

M SERIES

M SERIES: M22 WARRIOR

VARIABLE-OUTPUT TAILCAP SWITCH LED FLASHLIGHT

950 LUMENS

A light from the Warrior line is the only light you'll need for most tactical applications. Powerful outputs, long beams, and dedicated accessories make them coveted tools for government agencies, law enforcement, military, or hunting. The design is tailored to low-light techniques such as the Harries, FBI, neck index, and cigar methods with a sturdy syringe grip while the aircraft-grade aluminum body delivers exceptional durability. With options like the instant strobe tailcap button on the M20SX Javelot or the built-in twist mode selector of the M22 Warrior, you can choose what you need to get the job done whether that's heading out on patrol, writing a ticket, searching a structure, or making an entry.



M22 WARRIOR SPECS

	MODE 1	MODE 2	MODE 3
	950 lumens	250 lumens	20 lumens
	1 hour	3 hours	30 hours
	1001ft / 305m		
	23,256 CANDELA		
	IPX8 WATERPROOF UP TO 2 m		
	6.6ft / 2m		
	1 x CREE XM-L2		
	2 x CR123A or 1x18650		
	L 5.7in / 114.5mm x D 1.6in / 40.6mm		
	5.15oz / 146g (EXCLUDING BATTERIES)		

M20SX JAVELOT SPECS

	MODE 1	MODE 2	MODE 3
	820 lumens	150 lumens	25 lumens
	1.25 hours	3 hours	18 hours
	1214ft / 370m		
	34,200 CANDELA		
	IPX7 WATERPROOF UP TO 1m		
	4.9ft / 1.5m		
	1 x CREE XM-L2		
	2 x CR123A or 1 x 18650		
	L 5.5in / 140mm x D 1.4in / 35.5mm		
	4.4oz / 124g (EXCLUDING BATTERIES)		

M22 WARRIOR FEATURES

- 1 Cycle through three brightness levels by twisting the head
- 2 Tailcap switch clicks for constant on or provides momentary activation, brightest output, and strobe through half presses
- 3 Syringe grip for practical use with firearms
- 4 Easily accessible lock-out feature with a half turn the tailcap
- 5 From the off position, automatically return to your last brightness level with the built in memory function
- 6 Waterproof up to 2 meters
- 7 Aircraft-grade aluminum body with anti-scratch MilSpec Type-III hard anodizing
- 8 Contoured bezel ring offers additional self-defense options

M SERIES

NEW

M SERIES: M23 JAVELOT VARIABLE-OUTPUT TAILCAP SWITCH LED FLASHLIGHT

1,020 LUMENS

Meet the new rugged M23 Javelot. It delivers 1020 lumens of searing white light that reaches over 1400 feet, making it an excellent choice for long-range uses. Its stainless-steel bezel and rugged tailcap conductive structure provide shockproof protection against accidental drops, while it's MilSpec Type-III hard anodized aluminum body makes it durable enough for everyday hard use. Get your hands on the M23 Javelot and crush darkness.



M23 JAVELOT FEATURES

- 1 Cycle through three brightness levels by twisting the head
- 2 Tailcap switch clicks for constant on or provides momentary activation, brightest output, and strobe through half presses
- 3 Syringe grip for practical use with firearms
- 4 Easily accessible lock-out feature with a half turn the tailcap
- 5 From the off position, automatically return to your last brightness level with the built in memory function
- 6 Waterproof up to 2 meters
- 7 Aircraft-grade aluminum body with anti-scratch MilSpec Type III hard anodizing
- 8 Contoured bezel ring offers additional self-defense options

M SERIES

► The M23 Javelot features a large tailcap button, making it easy to find and activate even with gloves. It's scalloped shroud protects the tailcap switch from accidental activation.



► The M23 Javelot's scalloped bezel allows you to stand the light on its tailcap end to act as a hands-free utility light.



M23 JAVELOT SPECS

	MODE 1	MODE 2	MODE 3
	1020~600 lumens	350 lumens	20 lumens
	5 min + 55 min	2 hours	30 hours
	1430ft / 436 m		
	47,500 CANDELA		
	IPX8 WATERPROOF UP TO 2m		
	4.9ft / 1.5m		
	1 x CREE XP-L HI		
	2 x CR123A or 1 x18650		
	L 5.71in / 145mm x D 1.61in / 41mm		
	5.36oz / 152g (EXCLUDING BATTERIES)		

M SERIES

M SERIES: M2X-UT JAVELOT EXTENDED-RANGE, VARIABLE-OUTPUT TAILCAP SWITCH LED FLASHLIGHT

REACHES 2,657 FT

With its CREE XP-L HI LED, the M2X-UT Javelot delivers a tightly focused 1020-lumen beam, making it ideal for long-range uses. It has three brightness levels from 20 to 1020 lumens, plus a strobe mode. It's powerful enough to reach extreme distances, but small enough for everyday carry. And its dual-power source capability allows you to conveniently use either non-rechargeable or rechargeable lithium batteries. The M2X's tactical tailcap switch features momentary activation and clicks on and off, while also providing immediate access directly to the brightest setting and strobe mode. Its hard anodized aircraft-grade aluminum body is durable and compact making it ideal for search and rescue, law enforcement, outdoors, and emergency preparedness.



M2X-UT JAVELOT SPECS

	MODE 1	MODE 2	MODE 3
	1020 lumens	250 lumens	20 lumens
	1 hour	3 hours	30 hours
	2657ft / 810m		
	164,000 CANDELA		
	IPX8 WATERPROOF UP TO 2m		
	3.3ft / 1m		
	1 x CREE XP-L HI		
	2 x CR123A or 1 x 18650		
	L 6.4in / 163mm x D 2.3in / 63mm		
	7.69oz / 218g (EXCLUDING BATTERIES)		

M2X-UT JAVELOT FEATURES

- 1 Three brightness levels from 20 to 1020 lumens, controlled by a mode selector built into the head
- 2 Large, smooth reflector focuses beam to reach out over 2600 feet
- 3 CREE XP-L HI LED with a smooth reflector creates a tightly-focused beam to maximize throw
- 4 Multi-function clicky tailcap switch with momentary activation and on/off, along with quick access to the brightest level and the blinding strobe mode
- 5 Automatically return to your last brightness level with the built in memory function easily changed via a mode selector built into the head
- 6 Aircraft-grade aluminum body with anti-scratch MilSpec Type-III hard anodizing

M SERIES

NEW

M SERIES: M3XS-UT JAVELOT EXTENDED-RANGE, VARIABLE-OUTPUT TAILCAP SWITCH LED FLASHLIGHT

REACHES 3,281 FT

The M3XS-UT Javelot is the ultimate tactical light for military, law enforcement, and security. Pushing the CREE LED to its limits, this 2.5-inch bezel and customized LED produce a tightly-focused beam for long-range uses. The 1-inch diameter body and numerous optional tactical accessories, like weapon mounts, a remote pressure switch, and colored filters, make it compatible with most firearms.



M3XS-UT JAVELOT SPECS

	MODE 1	MODE 2	MODE 3	MODE 4
	1200 ~720 lumens	600 lumens	80 lumens	3 lumens
	5 min + 55 min	1.5 hours	12 hours	360 hours
	3281 ft / 1000m			
	250,000 CANDELA			
	IPX8 WATERPROOF UP TO 2m			
	3.3ft / 1m			
	1 x CREE XP-L HI			
	(3 or 4) x CR123A or 2 x 18650			
	L 8.3in / 211mm x D 2.48in / 63mm			
	9oz / 255g (EXCLUDING BATTERIES)			

M3XS-UT JAVELOT FEATURES

- 1 Four brightness levels and strobe
- 2 Large reflector provides extreme beam throw
- 3 Low-profile side switch featuring a battery power indicator, which glows red when battery runs low
- 4 Deep knurling for a no-slip grip
- 5 From the off position, automatically return to your last brightness level with the built in memory function
- 6 Tailcap switch clicks for constant on or provides momentary activation.

R SERIES

NEW

R SERIES: R20 JAVELOT MICRO-USB RECHARGEABLE TAILCAP SWITCH LED FLASHLIGHT

900 LUMENS

The R20 Javelot is a rechargeable tailcap-switch 900 lumens light that comes with our 2600 mAh 18650 battery and a Micro-USB charging cable, making it a convenient option for police, security, industrial, the outdoors, and home applications alike. The tailcap switch allows momentary-on activation as well as clicking on and off. The R20 Javelot's power indicator near the head of the light lets you know when you need to recharge as well as indicates the charging status when plugged in. Powered by a customized 18650 battery, the R20 Javelot can reach up to 314 meters and is waterproof down to 2 meters.



R20 JAVELOT SPECS

	MODE 1	MODE 2	MODE 3
	900-450 lumens	100 lumens	10 lumens
	3 min + 150 min	9 hours	80 hours
	1030ft / 314m		
	24,700 CANDELA		
	IPX8 WATERPROOF UP TO 2m		
	4.9ft / 1.5m		
	1 x CREE XP-L HI		
	1 x 18650 (customized)		
	L 5.19 in / 132mm X D 1.24in / 31.5mm		
	3.03oz / 86g (EXCLUDING BATTERY)		

R20 SEEKER FEATURES

- 1 Charging indicator will glow red while charging and green when full charged
- 2 Charges via Micro-USB port and features a protective ring-cover sleeve to block out debris and water
- 3 Easily accessible lock-out feature with half-turn of the tailcap to prevent accidental activation
- 4 Rechargeable lithium battery with charging cable included
- 5 Aircraft-grade aluminum body with anti-scratch MilSpec Type-III hard anodizing
- 6 Stainless steel bezel provides protection from drops

R SERIES: R40 SEEKER MICRO-USB RECHARGEABLE SIDE SWITCH LED FLASHLIGHTS

1,100 LUMENS

The R40 Seeker is a convenient and powerful rechargeable LED flashlight ideal for police, security, industrial, and home applications alike. The light is charged directly through the tailcap, and with up to 4 days of light from one full charge, you don't have to be constantly searching for an outlet. The unibody design makes this a remarkably sturdy light that shrugs off heavy-duty use.



◀ The R40 Seeker features a Micro-USB port for convenient charging.

R40 SEEKER SPECS

	MODE 1	MODE 2	MODE 3
	1100 lumens	250 lumens	120 lumens
	2 hours	7 hours	100 hours
	919ft / 280m		
	19,600 CANDELA		
	IPX8 WATERPROOF UP TO 2m		
	3.3ft / 1m		
	1 x CREE XM-L2		
	1 x 26650		
	L 5.62 in / 143mm x D 1.52in / 39mm		
	8.65oz / 245 g (WITH BATTERY)		

R40 SEEKER FEATURES

- 1 Side switch cycles through three brightness levels, activates strobe, and notifies you of standby mode
- 2 Momentary light activated by pressing and holding the side switch
- 3 Rechargeable lithium battery with charging cable included
- 4 Lock-out function to prevent accidental activation
- 5 From the off position, automatically return to your last brightness level with the built in memory function
- 6 Stainless steel bezel provides protection from drops

SR SERIES

NEW

SR SERIES: SR52UT INTIMIDATOR EXTENDED-RANGE VARIABLE-OUTPUT SIDE SWITCH LED FLASHLIGHT

800 METERS

The SR52UT Intimidator offers an extremely bright output and an incredible throw of 800 meters at a compact size. So whether you are playing a night football game in the desert, running a search and rescue operation, or simply lighting up the front yard, the SR52UT makes a great choice for nighttime adventures.

First to adopt Cree XP-L high-intensity LED to produce a longer beam distance than XM-L2

Our all new circuit design ensures higher durability and reliability

Flat tailcap design allow you to use it as a hands-free worklight

Features a all new copper bracket to fix LED board for better heat dissipation

Compatible with various capacity 18650 rechargeable batteries

Mirco-USB charging port

SR52UT INTIMIDATOR FEATURES

- 1 Side switch cycles through three brightness levels, activates strobe, and serves as low battery indicator
- 2 Lock-out function to prevent accidental activation
- 4 Stainless steel bezel provides protection from drops
- 5 Push the cover above USB socket aside, then make connection between the flashlight and PC's USB port or USB power adapter through micro-usb cable

SR SERIES



SR SERIES: SRMINI INTIMIDATOR II WIDE-ANGLED VARIABLE-OUTPUT SIDE SWITCH FLASHLIGHT

3,200 LUMENS

The SRmini Intimidator II is the next evolution of its predecessor the SRmini. This upgrade showcases a powerful 3200 lumens max output. At just over five inches in length, the SRmini II is a compact powerhouse with a textured lens that diffuses the beam to create a wide-angled and diffused pattern, but also projects the light up to 268 meters. Its soft silicone switch sits recessed near the head of the light to reduce accidental activation and is where you can cycle through the variable brightness levels. It runs off of three rechargeable lithium-ion 18650 batteries and is waterproof up to 2 meters.

SRMINI INTIMIDATOR II SPECS

	MODE 1	MODE 2	MODE 3	MODE 4
	3200 lumens	1600 lumens	800 lumens	200 lumens
	/	3 hours	5.5 hours	16 hours
	879ft / 268m			
	18,000 CANDELA			
	IPX8 WATERPROOF UP TO 2m			
	4.9ft / 1.5m			
	3 x CREE XM-L2			
	3 x 18650			
	L 5.2in/132mm x D 1.87 in/47.5mm			
	6.38oz / 181g (EXCLUDING BATTERIES)			

SR52UT INTIMIDATOR SPECS

	MODE 1	MODE 2	MODE 3
	1100 lumens	550 lumens	80 lumens
	4 hours	7.5 hours	40 hours
	2625ft / 800m		
	160,000 CANDELA		
	IPX8 WATERPROOF UP TO 2m		
	3.3ft / 1m		
	1 x Cree XP-L HI		
	3 x 18650		
	L 6.3 in / 161.5mm x D 2.5 in / 63mm		
	14.3oz / 405g (EXCLUDING BATTERIES)		



Acrylic lens with a honeycomb-like streak line surface delivering a homogeneous beam.

CREE XM-L2 LED

Micro-USB charging port



SRMINI INTIMIDATOR II FEATURES

- 1 Side switch cycles through three brightness levels, activates strobe and momentary turbo mode
- 2 Three reflectors and a highly diffused acrylic lens emits a smooth floodlight for soft area lighting
- 3 Easily accessible lock-out feature with triple click of side switch from the off position
- 4 From the off position, automatically return to your last brightness level with the built-in memory function
- 6 Push the cover above USB socket aside, then make connection between the flashlight and PC's USB port or USB power adapter through Micro-USB cable
- 7 Stainless steel bezel provides protection from drops

SR SERIES

SR SERIES: SR95/SR96

RECHARGEABLE VARIABLE-OUTPUT LED SEARCHLIGHTS

The SR9x models are designed for the best and brightest illumination in times of need. All SR9x models have a built-in rechargeable lithium battery in the handle making expensive D-cell batteries a thing of the past. The tailcap also features a battery power indicator to know exactly how far you can go between charges. With outputs up to 4800 lumens and throw nearing a half a mile, turn night into day with the SR series.

SR95/SR95S UT INTIMIDATOR

RECHARGEABLE EXTENDED-RANGE, VARIABLE-OUTPUT SEARCHLIGHT

2,000 LUMENS

SHOWN: SR95S UT INTIMIDATOR



SR95/SR95S UT INTIMIDATOR FEATURES

- 1 Three brightness levels from 120 to 2,000 lumens, plus a strobe mode
- 2 Easily check how much battery life you have left by pressing the power indicator button
- 3 Powerful and efficient SR95: LUMINUS SST-90 LED, SR95S-UT: LUMINUS SBT-70 LED)
- 4 Aircraft-grade aluminum body with anti-scratch MilSpec Type-III hard anodizing
- 5 Rechargeable lithium battery with charging port and power indicator
- 6 Advanced thermal management and hollowed-out head structure to prevent overheating

SR96 INTIMIDATOR RECHARGEABLE WIDE-ANGLED VARIABLE-OUTPUT SEARCHLIGHT

REACHES 1,214 FT



FEATURES

- 1 Three brightness levels from 450 to 4,800 lumens, plus a strobe mode
- 2 Multi-function clicky side switch with momentary activation and on/off, including a memory function to remember the last power setting used
- 3 Three Cree MK-R LEDs with separated reflectors produce a wide-diffused beam
- 4 Aircraft-grade aluminum body with anti-scratch MilSpec Type III hard anodizing
- 5 Rechargeable lithium battery with charging port and power indicator
- 6 Advanced thermal management and hollowed-out head structure to prevent overheating

SR95/SR95S UT INTIMIDATOR SPECS

	MODE 1	MODE 2	MODE 3	MODE 1	MODE 2	MODE 3
	2000 lumens	600 lumens	120 lumens	1250 lumens	500 lumens	150 lumens
	1.83 hours	9.5 hours	46 hours	3 hours	8 hours	48 hours
	2362ft / 720m		3281ft / 1000m			
	129,600 CANDELA		250,000 CANDELA			
	IPX6					
	4.9ft / 1.5m					
	LUMINUS SST-90		LUMINUS SBT-70			
	7800mAh rechargeable Lithium					
	L 12.8in/325mm x D 3.54 in/90mm					
	43.4oz / 1,230.5 g (INCLUDING BATTERIES)					

SR96 INTIMIDATOR SPECS

	MODE 1	MODE 2	MODE 3
	4800 lumens	1500 lumens	450 lumens
	.83 hours	6 hours	16 hours
	1066ft / 325m		
	26,400 CANDELA		
	IPX6		
	3.3ft / 1m		
	3 x Cree MK-R		
	7800mAh rechargeable Lithium		
	L 10.9in/276.9mm x D 3.54in/90mm		
	42.89 oz / 1,216 g (INCLUDING BATTERIES)		



X SERIES

When you need serious light, reach for the rechargeable X6 Marauder. At 5000 lumens, it's the ideal tool for search and rescue, hunting, and the outdoors, but coupled with tripod threading and an AC adapter, the X6 goes beyond a handheld spotlight. It lends itself to more versatile uses from fixed installations to video productions by remotely operating the light via the battery pack.

X SERIES: X6 MARAUDER
RECHARGEABLE VARIABLE-OUTPUT LED SEARCHLIGHT

5,000 LUMENS



X6 MARAUDER SPECS

	MODE 1	MODE 2	MODE 3
	5,000 lumens	1,200 lumens	150 lumens
	75 min	4.5 hours	30 hours
	2100ft / 640m		
	102,400 CANDELA		
	IPX6		
	3.3ft / 1m		
	6 x Cree XM-L		
	5200mAh rechargeable Lithium battery pack		
	L 6.5 in / 165mm x D 4.72in / 120mm		
	37.56 oz / 1065 g (INCLUDING BATTERY PACK)		

X6 MARAUDER FEATURES

- 1 Active thermal management prevents overheating and rubber boots protect users from heat
- 2 Three brightness levels up to 5000 lumens and strobe
- 3 Water resistant from heavy rain, splashes, and other wet environments
- 4 AC charger and power cord included
- 5 Rechargeable lithium battery pack features a belt clip, power switch, charging indicator, and a remote switching option
- 6 6 CREE XM-L LEDs turn night into day with a beam distance up to 2,100 ft

H SERIES

H SERIES: H15S WAVE

RECHARGEABLE VARIABLE-OUTPUT HEADLAMP

The H15S Wave is a powerful and intelligent head lamp with a rechargeable battery pack and elastic head band. With 250 lumens of white light, three brightness levels and up to 36 hours of runtime, it's the perfect choice for any challenge you might face in the outdoors. For the ultimate hands-free experience, activate the infrared sensor. For instance, if you're literally up to your elbows in grease, simply swipe your hand in front of the headlamp to turn it on or off. The H15S features a top-of-the-line CREE XM-L2 LED, with a built-in diffuser filter that flips up or down to give you exactly the type of beam you need. The rechargeable battery pack charges via Micro-USB cable and is located on the rear of the head band to better distribute the weight. You have two hands, the H15S lets you use them.



- ▶ Truly hands-free lighting: Built-in IR sensors let you turn the headlamp on and off with a wave of your hand.



H15S WAVE SPECS

	MODE 1	MODE 2	MODE 3
	250 lumens	100 lumens	15 lumens
	200 lumens (with diffuser)	85 lumens (with diffuser)	12 lumens (with diffuser)
	3 hours	5.6 hours	36 hours
	279ft / 85m		
	1,805 CANDELA		
	IPX6		
	3.3ft / 1m		
	1 x CREE XM-L2		
	4 x AAA (alkaline or NiMH) or 1200mAh rechargeable Lithium battery		
	2.16 x 1.65 x 1.06in / 55 x 42 x 27mm (Light head)		
	3.46oz / 98g (Headlamp) <small>(EXCLUDING BATTERIES)</small>		



H SERIES

H SERIES: H25 WAVE/H35 WAVE

RECHARGEABLE VARIABLE-OUTPUT HEADLAMPS

Introducing the new H25 Wave and H35 Wave LED headlamps, compact, powerful, and intelligent headlamps that produces up to 1500 lumens of white light. Each headlamp features three brightness levels and a die-casted aluminum head, which maximizes heat dissipation for optimal light performance. Both are water resistant from heavy rain, splashes, and other wet environments (IPX 6) and have a working temperature of -20C to 40C. The H25 features a single LED and reflector for a more focused beam, while the H35's three smaller reflectors offer a wider diffused light. To cycle through the three brightness levels, simply push the top head switch to select your desired output. The head has the ability to articulate up and down, giving you the flexibility to angle the beam. For the ultimate hands-free experience, activate the infrared sensor and simply swipe your hand in front of the headlamp to turn it on or off.

The rechargeable battery pack (5200mAh/7.4V) comes with a belt clip to secure it as you move and charges via a convenient USB port. The battery pack can also be used as a power bank to charge mobile devices.

SHOWN: H25 WAVE



H SERIES



H25/H35 WAVE FEATURES

- 1 For the ultimate hands-free experience, activate the infrared sensor and simply swipe your hand in front of the headlamp to turn it on or off
- 2 Light head has the ability to articulate up and down, giving you the flexibility to angle the beam
- 3 Include Rechargeable Lithium battery pack (5200mAh/7.4V) with USB charging port (max 2.5A) that can be used as a power bank to charge mobile devices
- 4 Rechargeable Lithium battery pack features a integrated battery power indicator and fully charged in less than four hours

H25 WAVE SPECS

	MODE 1	MODE 2	MODE 3
	800 lumens	250 lumens	35 lumens
	5 hours	12 hours	60 hours
	696ft / 212m		
	11,200 CANDELA		
	IPX6 WATER RESISTANT		
	3.3ft / 1m		
	1 x CREE XM-L2		
	1 x 5200mAh 7.4V battery pack		
	2.44 x 1.65 x 1.14 in / 62 x 42 x 29mm (Light head)		
	4.34 oz / 123g (Headlamp) 11.3 oz / 320g (Battery Pack)		

H35 WAVE SPECS

	MODE 1	MODE 2	MODE 3
	1500 lumens	550 lumens	150 lumens
	2.5 hours	8 hours	24 hours
	656ft / 200m		
	10,000 CANDELA		
	IPX6 WATER RESISTANT		
	3.3ft / 1m		
	3 x CREE XM-L2		
	1 x 5200mAh 7.4V battery pack		
	2.91 x 1.97 x 1.3 in / 74 x 50 x 33mm (Light head)		
	5.5 oz / 155g (Headlamp) 11.3 oz / 320g (Battery Pack)		

PL-1 PISTOL WEAPONLIGHT

NEW

PISTOL WEAPONLIGHT: PL-1 VALKYRIE

2-COLOR LIGHTS LED WEAPONLIGHT



PL-1 VALKYRIE SPECS

	WHITE LIGHT	BLUE LIGHT
	400 lumens	2 lumens
	50 min	40 hours
	341ft / 104m	
	2,700 CANDELA	
	IPX6 WATER RESISTANT	
	3.3ft / 1m	
	1 x CREE XP-L	
	1 x CR123A or RCR123A	
	3.1 x 1.22 x 1.5 in / 78 x 31 x 38mm	
	3.7 oz / 105g	

PL-1 VALKYRIE FEATURES

- 1 Powerful CREE XP-L CW LED in a smooth reflector offers both a focused beam for distance and a softer surround beam for the immediate area
- 2 Unscrew the bezel for easy access to battery compartment
- 3 Ambidextrous switching for easy access to output levels
- 4 Swing arm mount allows for easy attachment to Picatinny rails works with non-rechargeable and rechargeable lithium batteries
- 5 Aircraft-grade aluminum body with anti-scratch MILSpec Type-III hard anodizing



Single click either side of the ambidextrous switch to turn the white light or blue navigation light on and off, double click on either side of the ambidextrous switch to activate the strobe mode.



Introducing the new Valkyrie LED pistol weaponlight with 400 lumens of powerful white light and low-lumen navigational LEDs, all running off a single CR123A battery. Attach the Valkyrie securely via its swing arm mount to any Picatinny rail. Easily replace the battery by unscrewing the bezel so you don't have to remove the light from your pistol. Its ambidextrous switching at the back end allows the user to easily activate the navigation LEDs with a press and hold for momentary-on, while pushing all the way down offers the high output on constant-on. There are three operating modes: momentary-on, constant-on, and strobe. Press the switch down for more than two seconds and the light will remain on constant-on. Two quick full presses will activate the strobe (10 hertz). Fully pressing the switch off will turn the light off.

ACCESSORIES

QUALITY ACCESSORIES FROM OLIGHT

Olight accessories are specifically designed to compliment our lights and your needs. We know getting out there with the right tools on hand leads to a successful nighttime adventure.



▶ Magnetic Weapon Mount

Easily attach a flashlight to weapons that do not have rails or other mounting options.



▶ Charger

Intelligent charger can match any rechargeable batteries which are able to insert into the charge bays.



▶ Remote Pressure Switch

Allows you to activate your T Series or M Series weapon light while maintaining your preferred grip.



▶ Three Key Remote Pressure Switch

The three key switch has up and down keys to increase and decrease brightness, as well as momentary on/off.



▶ Batteries

18650, 16340, 14500, CR123A. Various batteries can be used to power your flashlight.



▶ Color Filters & Diffuser

Filters are available in different sizes to fit the S series, T series, M series, and SR series flashlights.



▶ Traffic Wand

Orange and white traffic wands convert your M20 or S Series flashlight into a glowing high-visibility wand.



▶ Weapon Mount

This weapon mount securely attaches your 1" bodied light to Picatinny and Weaver rails.

SPECIFICATIONS CHART

	i3E	i3S	S30R II	S1	S10R II	S20R	ST25 Baton	S10	S15	S20
LUMENS	High	80	1020-600	500-300	500	550	550	400	280	550
	Medium	/	450	80	100	120	300	85	70	120
	Low	/	20	8	5	5	100	5	7	5
	Strobe	/	1020	500	500	550	550	400	280	550
CANDELA	420	360	9,600	3,000	2,800	3,400	4,400	2,700	1,750	3,500
RUNTIME (HOURS)	High	0.61	3+110min	1.5+90min	0.83	2	0.5	1.25	0.75	2
	Medium	/	2.8	6	3.2	9	1	7.5	4	9
	Low	/	62	40	7 days	20 days	6.5	108	32	120
	Strobe	/	3.76	3	1.67	4	60	2.5	1.5	4
WEIGHT	US (oz)	0.28	4.52	1.06	1.52	1.83	2.75	1.48	1.62	1.83
	Metric (g)	7.9	11	30	43	52	78	42	46	52
LENGTH	US (in)	2.37	4.65	2.4	2.89	4.27	6	2.7	3.38	4.2
	Metric (mm)	60.2	70.8	61	73.5	108.4	152.5	70.5	86	106
BEZEL DIAMETER	US (in)	0.55	1.02	0.83	0.91	0.91	0.91	0.91	0.91	0.91
	Metric (mm)	14	14	21	23	23	23	23	23	23
BEAM DISTANCE	US (ft)	136	643	361	345	387	426.5	341.2	275.6	387.1
	Metric (m)	41	38	110	105	118	130	104	84	118
BATTERIES	1*AAA NiMH	1*AAA NiMH	1*18650 (Customized)	1*CR123A/ 1*RCR123A	1*CR123A/ 1*RCR123A	1*18650	2*AA NiMH	1*CR123A/ 1*RCR123A	1*14500 / 1*AA / 1*NiMH Battery	2*CR123A/ 1*18650
	1*LUXEON TX-L1T2	1*Cree XP-G2	1*Cree XM-L2	1*Cree XM-L2	1*Cree XP-L	1*Cree XM-L2	1*Cree XM-L2	1*Cree XM-L2	1*Cree XM-L2	1*Cree XM-L2
WATERPROOF	IPX8	IPX8	IPX8	IPX8	IPX7	IPX7	IPX7	IPX8	IPX8	IPX8
ACCESSORIES	Lanyard	-	-	•	•	•	•	•	•	•
	Holster	-	-	-	-	-	-	-	-	-
	Extended Tube	-	-	-	-	-	-	-	•	-
	Remote Switch	-	-	-	-	-	-	-	-	-
	Weapon Mount	-	-	-	-	-	-	-	-	-
	Traffic Wand	-	-	-	•	•	•	-	•	•

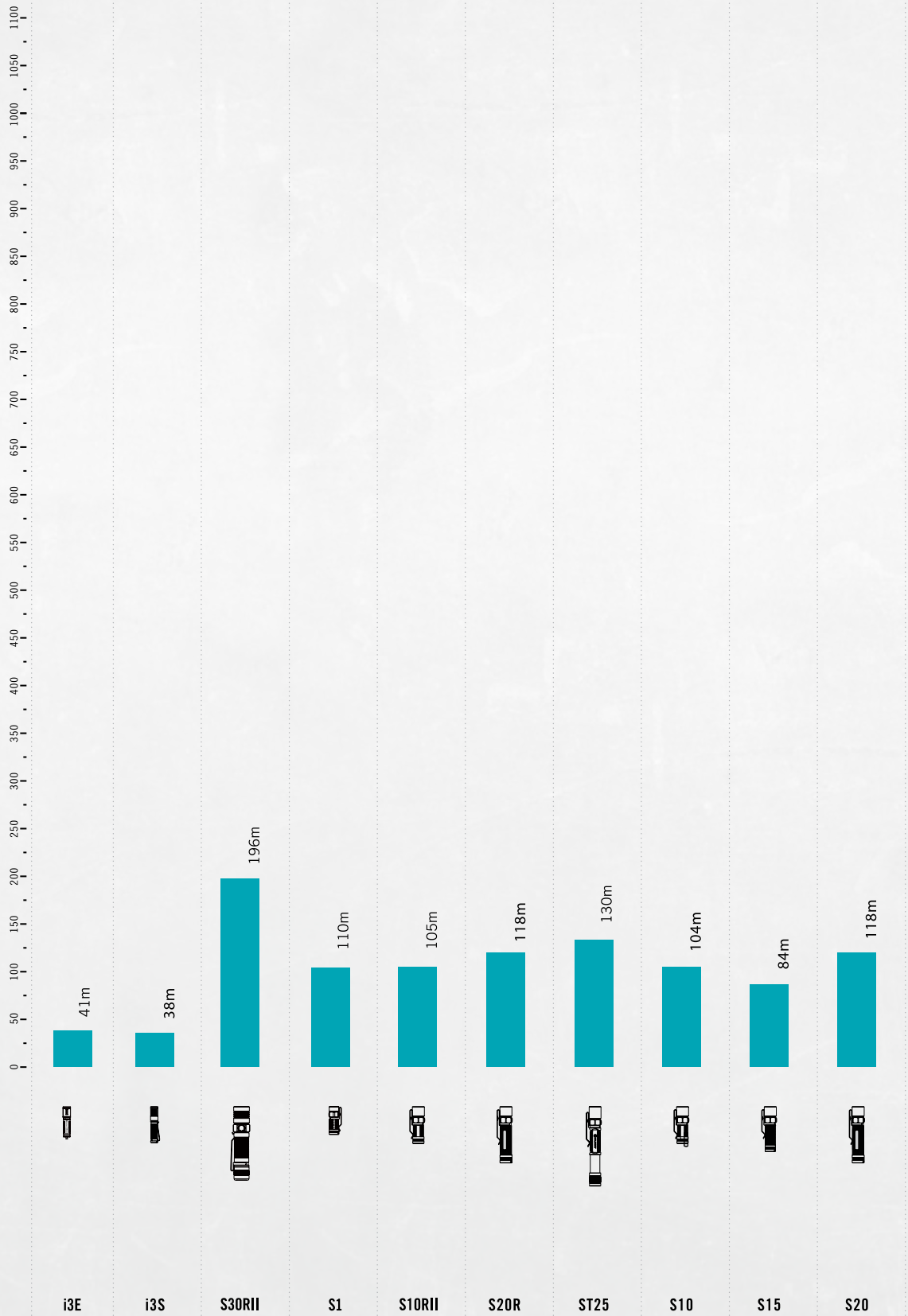
SPECIFICATIONS CHART

	M10	MTX Striker	M20SX Javelot	M22	M23	M2X-UT	M3XS-UT	R2D Javelot	R4D Seeker	SRMINI II
LUMENS	High	1000	820	950	1020	1,020	1200	900-450	1,100	3,200
	Medium	350	150	250	350	250	600	100	250	1,600
	Low	10	25	20	20	20	80	10	12	200
	Strobe	350	1000	820	950	1020	1200	900	1,100	3,200
CANDELA	2,880	9,000	34,200	23,256	47,500	164,000	250,000	24,700	19,600	18,000
RUNTIME (HOURS)	High	1	1.25	1	1	1	1	3+150min	2	-
	Medium	2	3	3	2	3	1.5	11	7	3
	Low	60	18	30	30	30	12	100	100	16
	Strobe	2.5	2	2	2	2	2	5	4	-
WEIGHT	US (oz)	2.82	4.4	5.15	5.36	7.69	8.99	3.03	8.65	6.38
	Metric (g)	80	125	146	152	218	255	86	245	181
LENGTH	US (in)	3.7	5.51	5.67	5.71	6.4	8.3	5.2	5.62	5.2
	Metric (mm)	93	136	144	145	163	211	132	143.3	132
BEZEL DIAMETER	US (in)	0.9	1.4	1.61	1.61	2.3	2.48	1.24	1.52	1.87
	Metric (mm)	23	26	41	41	63	63	31.5	39	47.5
BEAM DISTANCE	US (ft)	351	1,214	1,001	1,430	2,657	3,281	1030	917	879
	Metric (m)	107	370	305	436	810	1000	314	280	268
BATTERIES	1*CR123A / 1*RCR123A	2*CR123A / 1*18650	2*CR123A / 1*18650	2*CR123A / 1*18650	2*CR123A / 1*18650	2*CR123A / 1*18650	3*CR123A / 2*18650	1*18650 (Customized)	1*26650 4000 mAh (Customized)	3*18650 / 6*CR123A
	1*Cree XM-L2	1*Cree XM-L2	1*Cree XM-L2	1*Cree XM-L2	1*Cree XP-L HI	1*Cree XP-L HI	1*Cree XP-L HI	1*Cree XP-L HI	1*Cree XM-L2	3*Cree XM-L2
LED	IPX8	IPX8	IPX7	IPX8	IPX8	IPX8	IPX8	IPX8	IPX8	IPX8
WATERPROOF	IPX8	IPX8	IPX7	IPX8	IPX8	IPX8	IPX8	IPX8	IPX8	IPX8
ACCESSORIES	Lanyard	•	•	•	•	•	-	•	•	-
	Holster	-	-	•	•	•	•	-	•	•
	Extended Tube	-	-	-	-	•	•	-	-	-
	Remote Switch	•	-	•	•	•	•	-	-	-
	Weapon Mount	•	•	•	•	•	•	-	-	-
	Filter & Diffuser	•	-	•	•	•	•	-	•	•

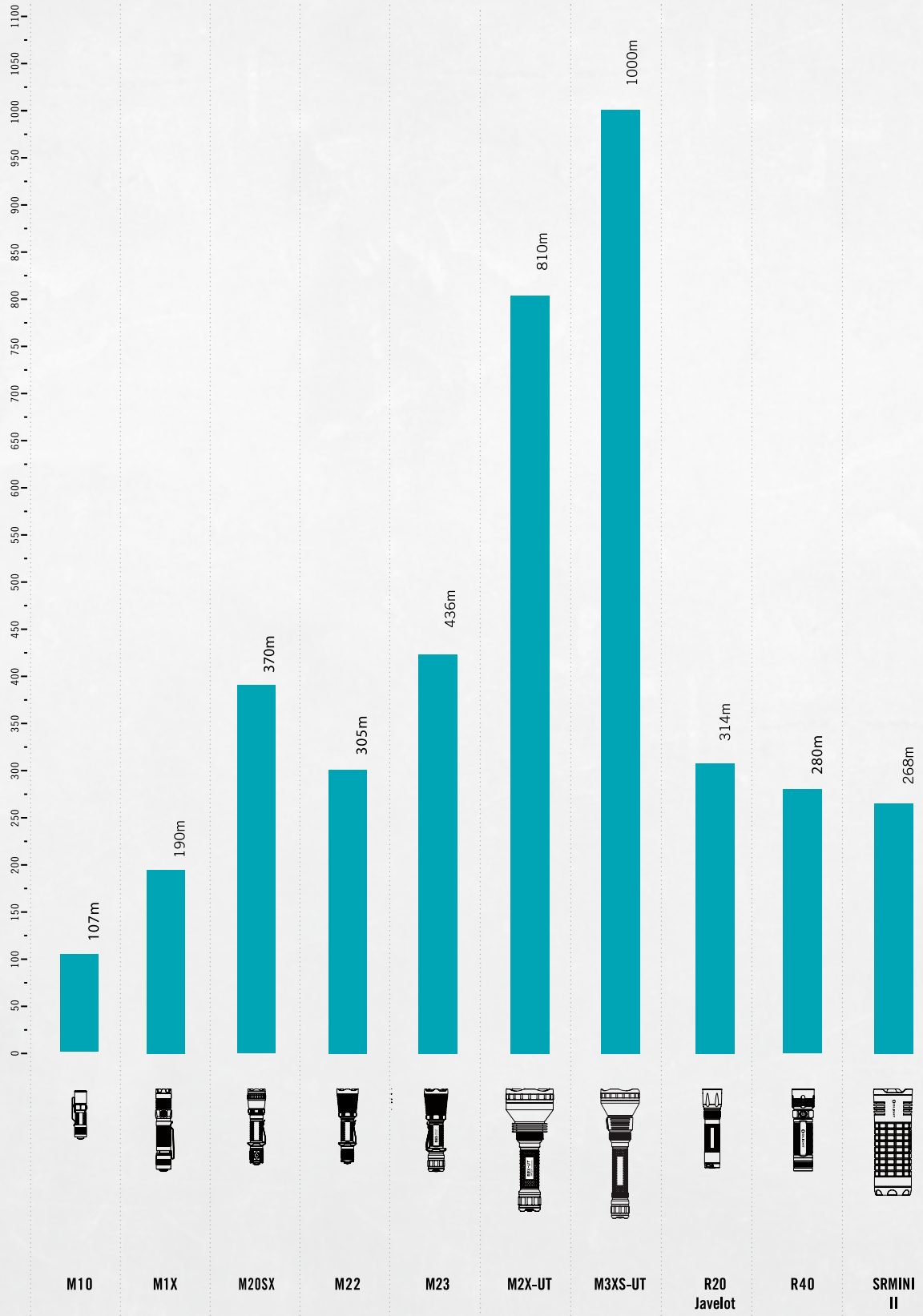
SPECIFICATIONS CHART

	SR52UT	SR95	SR95S UT	SR96	X6	H15S	H25	H35	PL-1
LUMENS	High	2,000	1,250	4,800	5,000	250	800	1,500	400
	Medium	600	500	1,500	1,200	100	250	550	-
	Low	120	150	450	150	15	35	150	2
	Strobe	1,100	1,250	4,800	5,000	-	-	-	400
CANDELA	160,000	129,600	250,000	26,400	102,400	1,805	11,200	10,000	2,700
RUNTIME (HOURS)	High	4	1.8	3	1.3	3	5	2.5	0.83
	Medium	7.5	9.5	8	4.5	5.6	12	8	-
	Low	40	46	48	30	36	60	24	40
	Strobe	8	3.6	6	2.6	-	-	-	1.66
WEIGHT	US (oz)	14.3	43.4	42.84	37.56	3.46	4.34	5.5	3.7
	Metric (g)	405	1,230	1,216	1,065	98	123	155	105
LENGTH	US (in)	6.3	12.8	12.8	6.5	2.17	2.44	2.92	3.1
	Metric (mm)	161.5	325	325	165	55	62	74	78
BEZEL DIAMETER	US (in)	2.5	3.54	3.54	4.72	1.65	1.65	1.97	1.22
	Metric (mm)	63	90	90	120	42	42	50	31
BEAM DISTANCE	US (ft)	2625	2,362	3,280	2,100	279	696	656	341
	Metric (m)	800	720	1,000	640	85	212	200	104
BATTERIES	3*18650 / 6*CR123A	1*Battery Pack	1*Battery Pack	1*Battery Pack	1*Battery Pack	4*AAA / 1*1200 mAh rechargeable Lithium battery	1*Battery Pack	1*Battery Pack	1*CR123A / 1*RCR123A
LED	1*Cree XP-L HI	1*Luminus SST-90	1*Luminus SBT-70	3*Cree MK-R	6*Cree XM-L	1*Cree XM-L2	1*Cree XM-L2	3*Cree XM-L2	1*Cree XP-L
WATERPROOF	IPX8	IPX6	IPX6	IPX6	IPX6	IPX6	IPX6	IPX6	IPX6
ACCESSORIES	Lanyard	-	-	-	-	-	-	-	-
	Holster	●	-	-	-	-	-	-	-
	Extended Tube	-	-	-	-	-	-	-	-
	Remote Switch	-	-	-	-	-	-	-	-
	Weapon Mount	-	-	-	-	-	-	-	-
Filter & Diffuser	●	-	-	-	-	-	-	-	-

BEAM COMPARISON CHART



BEAM COMPARISON CHART



BEAM COMPARISON CHART

