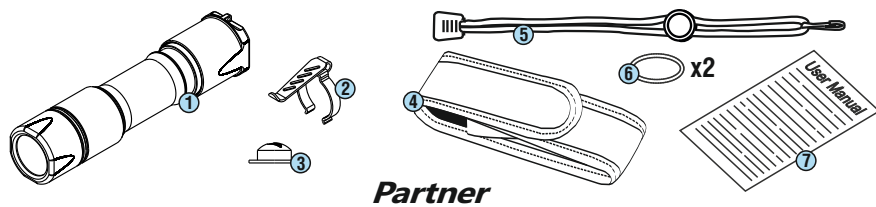


Set description



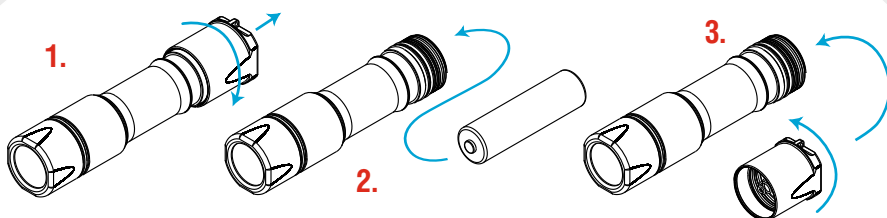
Partner

Items included in the package:

- | | |
|-------------------------|---------------------|
| 1 - Flashlight | 5 - Lanyard |
| 2 - Clip | 6 - 2 spare O-rings |
| 3 - Spare rubber button | 7 - User manual |
| 4 - Holster | |

- !**
- ✓ Depending on the model, your flashlight can inconsiderably differ from the pictures in the manual.
 - ✓ The producer reserves the right to change the package at his own discretion without modifying this manual.

Initial Service



To set/replace batteries:

1. Unscrew the tailcap.
2. Place the batteries with the positive contact (+) facing the head of the flashlight.
3. Adjust the tailcap and tighten it as far as it can go.

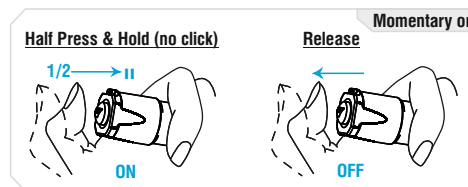
! We DO NOT RECOMMEND to leave power sources inside the flashlight for a long storage period, as batteries (especially, non-rechargeable) can leak for various reasons and damage the inner parts of the flashlight. If you want to keep your flashlight in a stand-by state with batteries in, use new and quality batteries, store the flashlight in acceptable for batteries operational temperature and revise the batteries' state at least once a month. If you have noticed any signs of batteries' defects, withdraw them from the flashlight and take out of operation. It is also recommended to replace discharged batteries with new ones before the storage as the chance of leakage is higher with discharged batteries.

Operation

The flashlight has two operational variants:

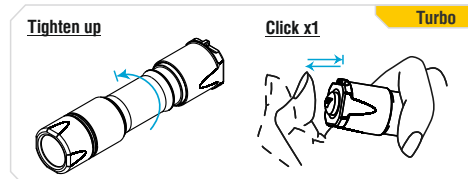
Turbo – permanently switched light at Turbo mode (activated by click with the head of the flashlight tightened up). It's an easy and comfortable operational mode for Hunters, especially when the flashlight is used with a remote switch.

Additional – permanently switched light at one of the Additional modes at user's choice (activated by click with the head of the flashlight unscrewed to 1/8). Additional modes: Firefly, Main1, Main2, Main3, Strobe (hidden).



Momentary on.

Any mode switched on by half-pressing of the button and active till the button is released. In Turbo mode suitable for giving signals by short button pressings. In Additional mode quick half-pressings can be used to switch modes.



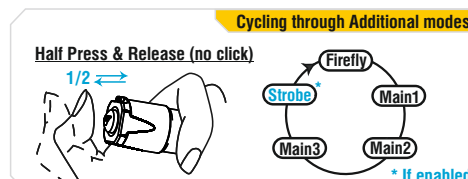
Turbo.

Tighten the head of the flashlight if it is unscrewed. First full click of the button turns the light on. Second full click turns it off.



Additional modes (Firefly + 3 Main + Strobe (if enabled)).

If the head of the flashlight is tightened up, unscrew it for 1/8 of a circle. Full click of the button turns the light on at the last used Additional mode.



Cycling through Additional modes.

To switch the mode turn the flashlight off and on (by full click or half-pressing). The modes switch cyclically: Firefly - Main1 - Main2 - Main3 - Strobe (if enabled).



Adding Strobe to Additional modes.

Strobe is a hidden mode which you can add or remove from the additional modes at your choice. To enable (remove) Strobe: unscrew and tighten up the head of the flashlight at least 10 times (while rotation you will change the modes). The pause must be <1 sec.

Automemorizing. After switching off the last used Mode is memorized for quick 1-click access at next switching on.

Lock-out function. Unscrew the tailcap to 1/4 for the protection from accidental switching on.

Low Battery Indication. If the brightness is <25% from the nominal value, the LED flashes 2 times ONCE (after 30sec from switching on). If you are not sure if it flashed or not switch the flashlight off and on: in case the battery is low flashes will repeat. Light output decreases to Firefly mode at critical level.

Active temperature control. The flashlight can quickly heat up in Turbo mode. When the temperature becomes +60°C – the brightness decreases by small steps. After cooling-down (provided that battery voltage is sufficient) the brightness increases to the Turbo mode again. This stepping goes cyclically to maintain the user's safety and the flashlight's functionality. In conditions of good air-cooling the flashlight delivers light without stepping down even in Turbo mode. There are no preset timers for stepping, but real-time active temperature measurements.